



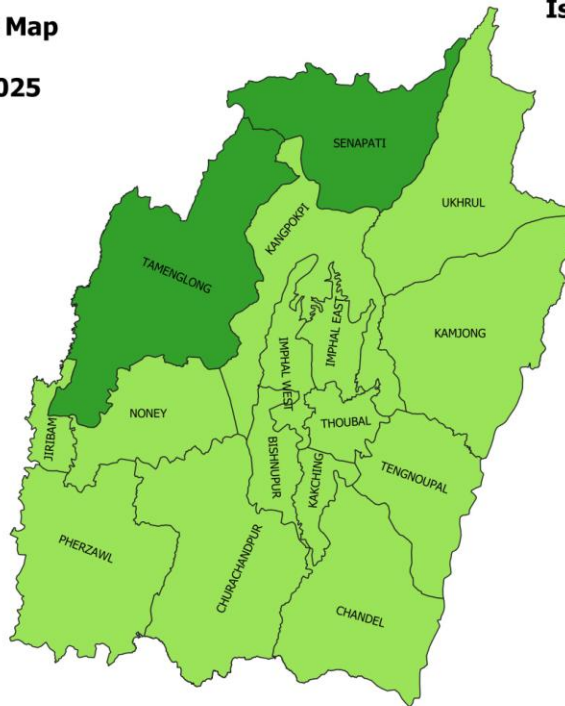
Govt. of India / भारत सरकार
Ministry of Earth Sciences / पृथ्वी विज्ञान मंत्रालय
India Meteorological Department / भारत मौसम विज्ञान विभाग
Meteorological Centre / मौसम केंद्र
Imphal – 795140/ इम्फाल

Date: 06.06.2025

District wise Forecast Maps for Manipur for next 5 days

**Rainfall Forecast Map
Manipur
Day 1: 06-06-2025**

Issue Date: 06-06-2025

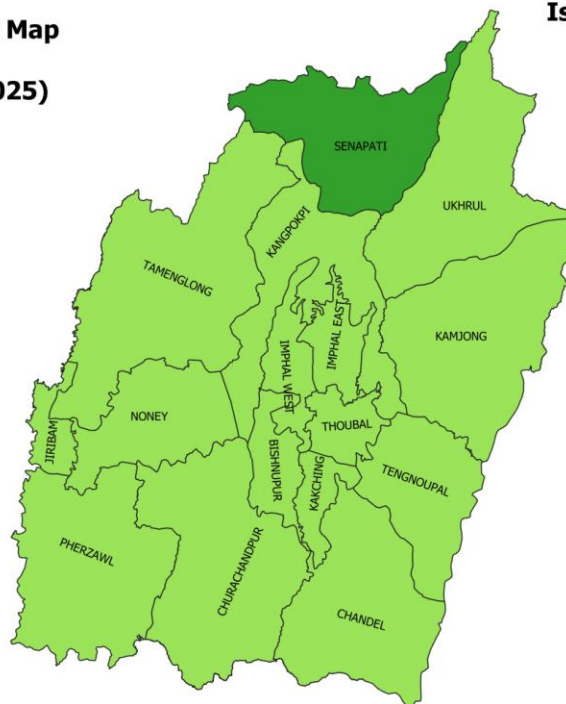


Forecast
□ DRY (No Rain)
■ ISOL (1 to 25%)
■ SCT (26 to 50%)
■ FWS (51 to 75%)
■ WS (76 to 100%)

**Meteorological Centre / मौसम केंद्र
Imphal – 795140 / इम्फाल - 795140**

**Rainfall Forecast Map
Manipur
Day 2 (07-06-2025)**

Issue Date: 06-06-2025



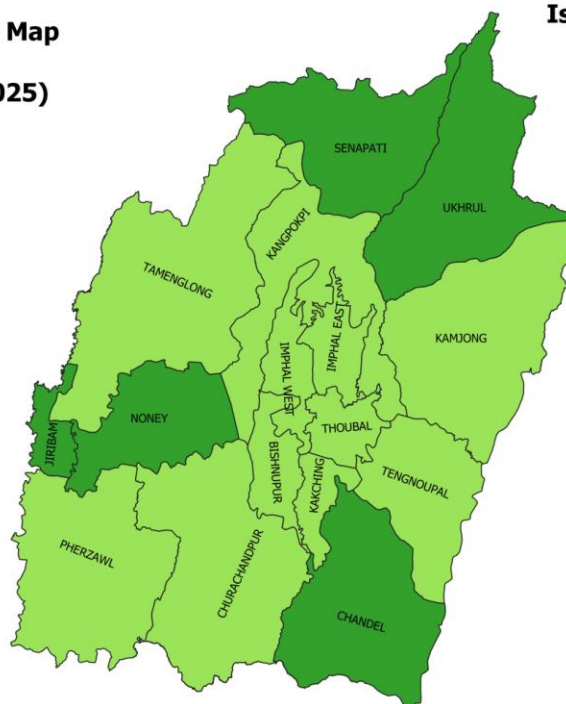
Forecast

- DRY (No Rain)
- ISOL (1 to 25%)
- SCT (26 to 50%)
- FWS (51 to 75%)
- WS (76 to 100%)

**Meteorological Centre / मौसम केंद्र
Imphal – 795140 / इम्फाल - 795140**

**Rainfall Forecast Map
Manipur
Day 3 (08-06-2025)**

Issue Date: 06-06-2025



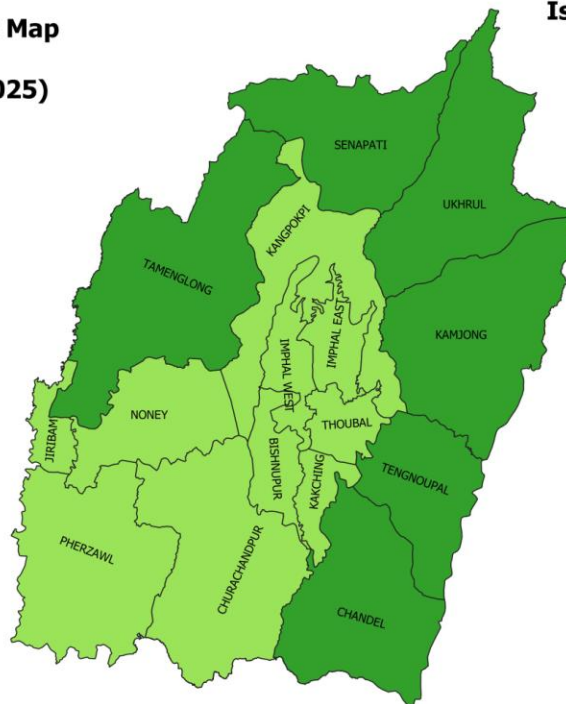
Forecast

- DRY (No Rain)
- ISOL (1 to 25%)
- SCT (26 to 50%)
- FWS (51 to 75%)
- WS (76 to 100%)

**Meteorological Centre / मौसम केंद्र
Imphal – 795140 / इम्फाल - 795140**

**Rainfall Forecast Map
Manipur
Day 4 (09-06-2025)**

Issue Date: 06-06-2025

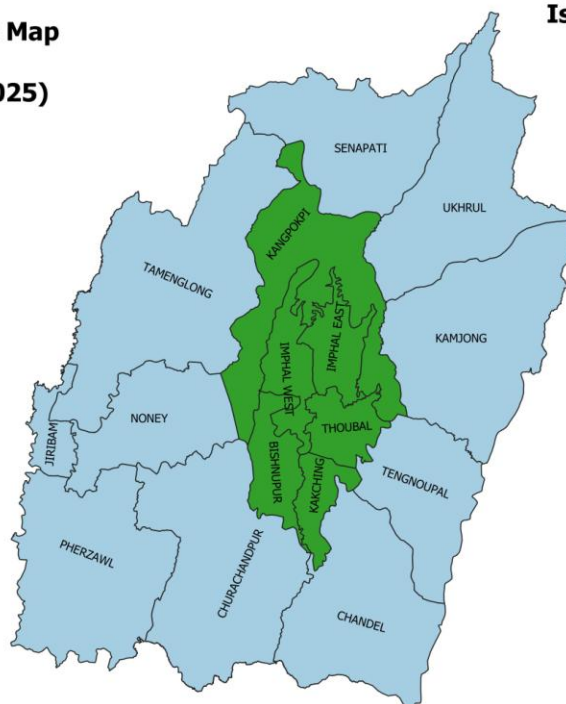


Forecast
 DRY (No Rain)
 ISOL (1 to 25%)
 SCT (26 to 50%)
 FWS (51 to 75%)
 WS (76 to 100%)

**Meteorological Centre / मौसम केंद्र
Imphal – 795140 / इम्फाल - 795140**

**Rainfall Forecast Map
Manipur
Day 5 (10-06-2025)**

Issue Date: 06-06-2025



Forecast
 DRY (No Rain)
 ISOL (1 to 25%)
 SCT (26 to 50%)
 FWS (51 to 75%)
 WS (76 to 100%)

**Meteorological Centre / मौसम केंद्र
Imphal – 795140 / इम्फाल - 795140**

****The forecast for any day is valid from 0830 hours IST of the day till 0830 hrs IST of the next day**

Legends:

Legend: RA-Rain, TS-Thundershowers, SFG- Shallow Fog, MFG- Moderate Fog

Probability of Occurrence (%): Unlikely :<25%; Likely:25-50%; Very Likely:50-75%; Most Likely:> 75%.

Heavy Rain: 64.5-115.5 mm/day, **Very Heavy Rain:** 115.6-204.4 mm/day, **Extremely Heavy Rain:** >204.5mm/day

Spatial Distribution: **ISOL:** isolated rain ($\leq 25\%$ of stations gets rain), **SCT:** scattered or at a few places rain (26 to 50% of stations gets rain), **FWS:** at many places or fairly widespread rain (51–75% of stations gets rain) and **WS:** at most places or widespread rain ($> 75\%$ of stations gets rain) .

For Detailed weather forecasts & warnings, kindly visit IMD website (<https://mausam.imd.gov.in/>)

Phone: 0385-2912395; e-mail: mcimphal@yahoo.com

+++++

Kindly download and use “**Mausam**” App for location specific forecast and warning “**Meghdoot**” App for Agromet advisory and “**Damini**” App for Lightning warning

+++++