



प्रादेशिकमौसमकेंद्र, कोलाबा, मुंबई  
Regional Meteorological Centre, Mumbai

Dated: 13 Sep 2022

Time of issue: 1300 hrs

**IMPACT BASED FORECAST FOR HEAVY RAINFALL OVER MUMBAI**

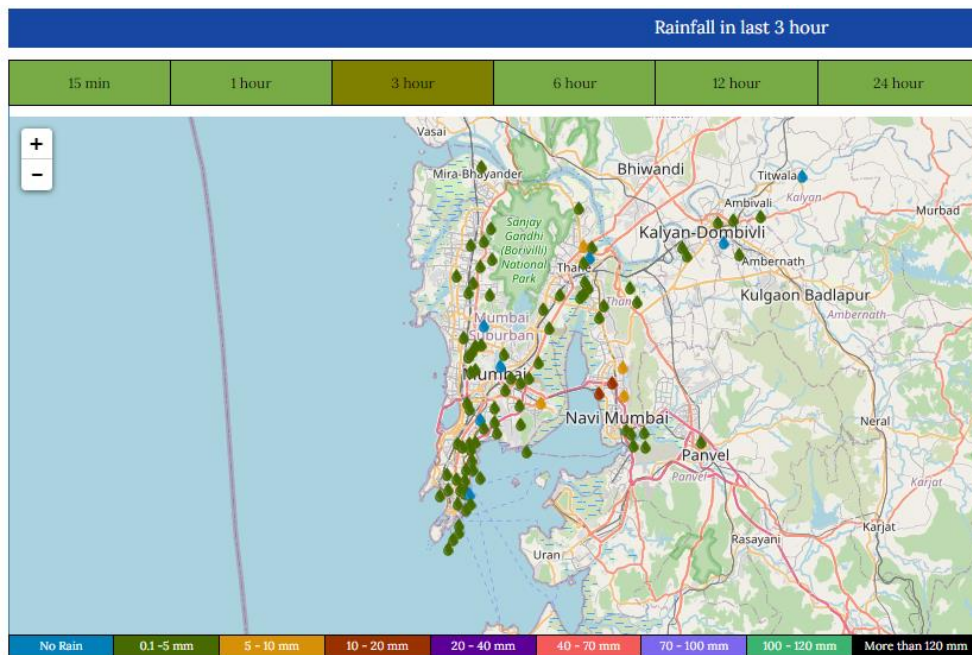
**Updates of Ongoing Heavy Rainfall Event**

<b>Rainfall Realised at 1130 hrs IST of 13 Sep 2022 (from 0830 hrs IST of 13 Sep 2022)</b>	<b>Mumbai city and suburbs experienced light to moderate rainfall during past 3 hrs. (Map attached)</b>  <b>Santacruz- 4 mm Colaba - 4 mm</b>
<b>Forecast for next 3-4 hrs</b>	<b>As per latest observations, Mumbai city and suburbs are very likely to experience moderate to intense spells of rainfall during next 3-4 hours.</b>
<b>Warning for 24 hours (from 0830 hrs of the day to 0830 hrs of next day)</b>	<b>Moderate rain in city and suburbs. Possibility of Heavy to very heavy rainfall at isolated places</b>
<b>Impact Expected</b>	<ul style="list-style-type: none"><li>• Water logging/inundation in most parts of low lying areas and river banks</li><li>• Disruption to road, rail and ferry transport leading to increased travel times.</li><li>• Possibility of flash floods coinciding with high tide.</li><li>• Local disruption of municipal services (Water, electricity etc.)</li><li>• Flow of water over low-lying roads and bridges.</li><li>• Possibility of danger to very old buildings and unmaintained structures</li><li>• Occasional gusty winds with speed reaching 40-50 gusting to 60 kmph along and off the coast resulting in possibilities of damage to vulnerable /temporary structures.</li><li>• Landslide/Mudslides and rock falls in vulnerable areas.</li><li>• Rough Sea conditions along the coast.</li></ul>

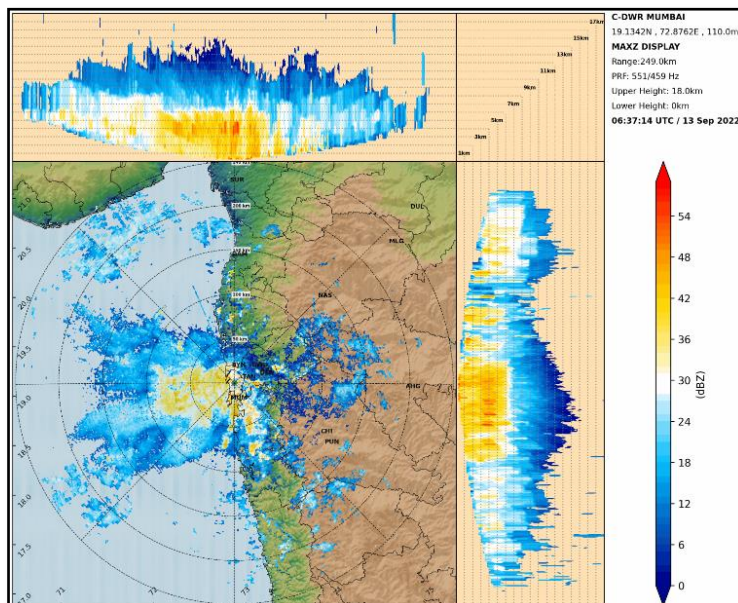
Action Suggested	<ul style="list-style-type: none"> <li>• Traffic may be regulated effectively</li> <li>• People staying in vulnerable places may take caution.</li> </ul>

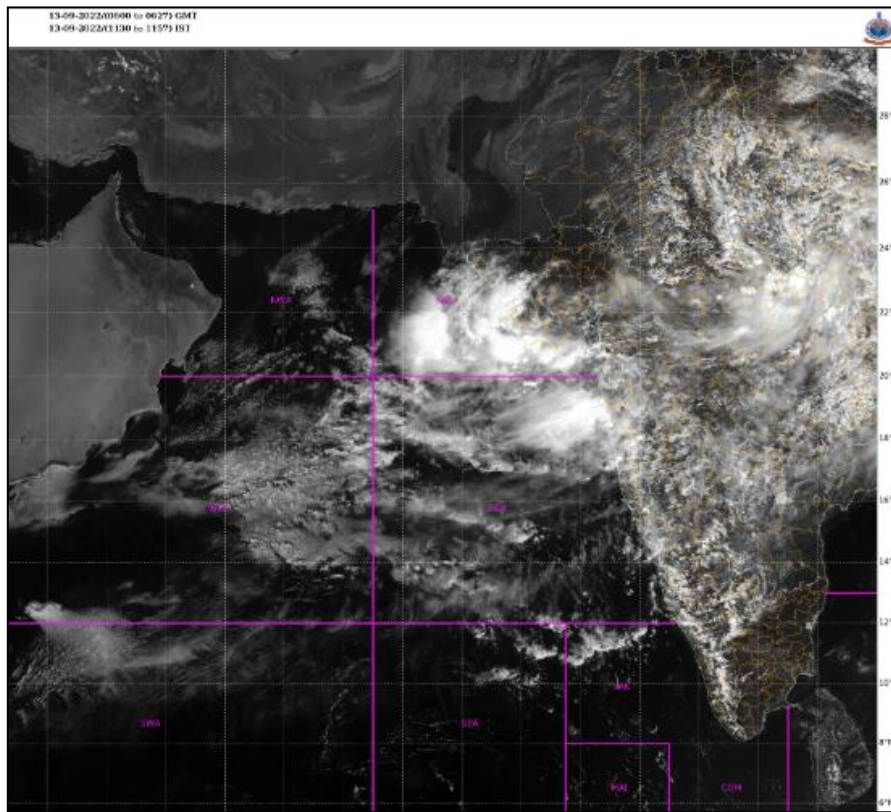
COLOR CODES	
Very Low	No action
Low	Be updated
Medium	Be prepared
High	Take Action

Rainfall realised during next 3 hours:



Current satellite and radar imageries:





**Legends:**

Rainfall Intensity			
Terminology	Rainfall Range	Terminology	Rainfall Range
Light Spell	1 cm /hr	Very Intense Spell	3-5 cm/hr
Moderate Spell	1-2 cm/hr	Extremely Intense Spell	5-10 cm/hr
Intense Spell	2-3 cm/hr	Cloud Burst	>10 cm/hr

Rainfall Categories			
Terminology	Rainfall (in mm)	Terminology	Rainfall (in mm)
Very Light Rainfall	Trace- 2.4	Heavy Rainfall	64.5-115.5
Light Rainfall	2.5-15.5	Very Heavy Rainfall	115.6-204.4
Moderate Rainfall	15.6-64.4	Extremely Heavy Rainfall	>=204.5

**Regional Weather Forecasting Centre**

**RMC Mumbai**

**Phone: +91 022 22150431/22174719/22174735**