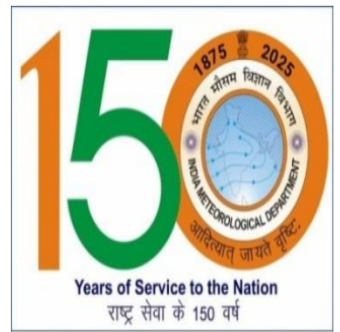




भारत सरकार
GOVERNMENT OF INDIA
भारत मौसम विज्ञान विभाग
INDIA METEOROLOGICAL DEPARTMENT
मौसम केंद्र, बिरसा मुंडा विमानपत्तन
METEOROLOGICAL CENTRE, BIRSA MUNDA AIRPORT
राँची, झारखण्ड, पिन- 834002
RANCHI, JHARKHAND, PIN-834002

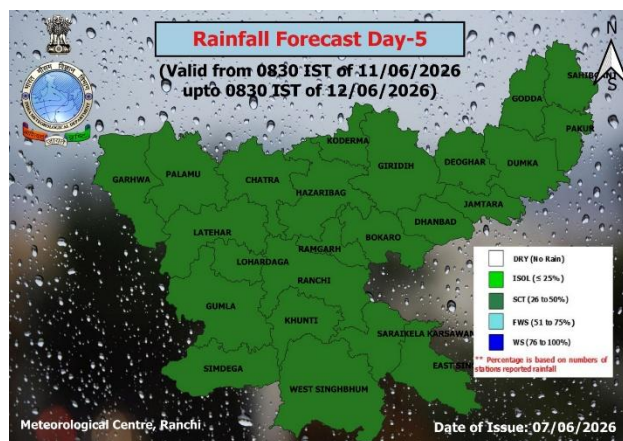
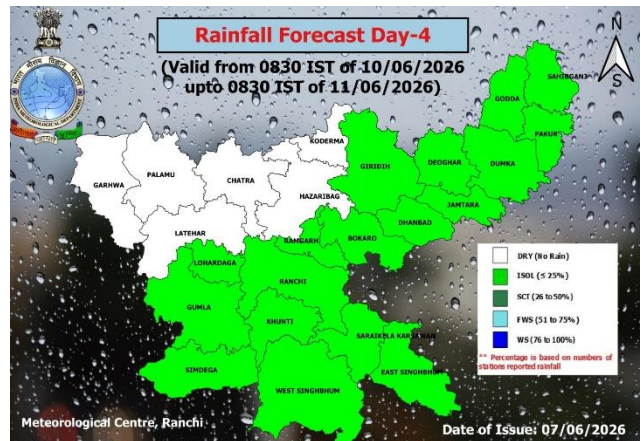
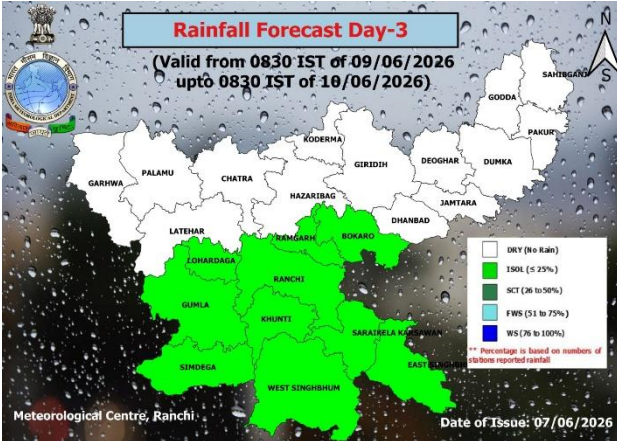
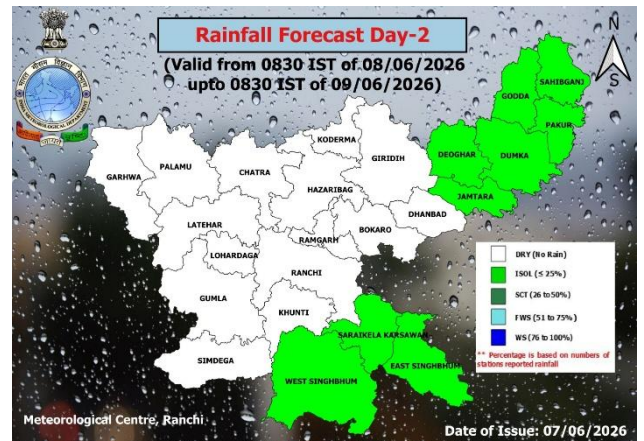
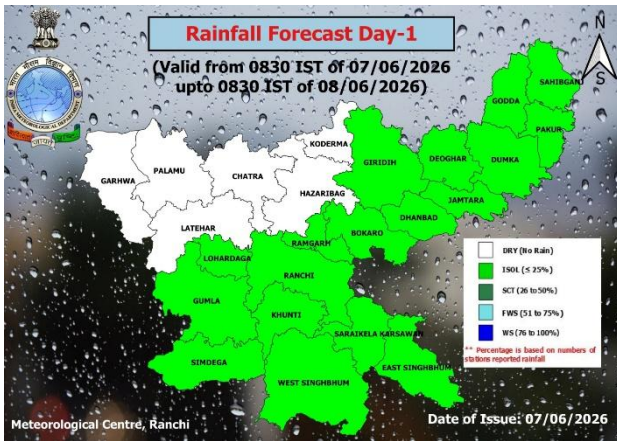


दूरभाष/Telephone: 2970311/2253254/2251709/253879 फैक्स/Fax: 0651-2251709/2253879

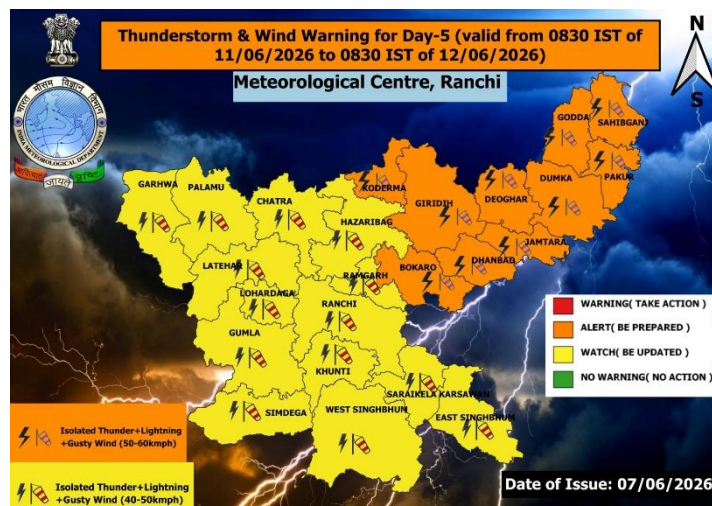
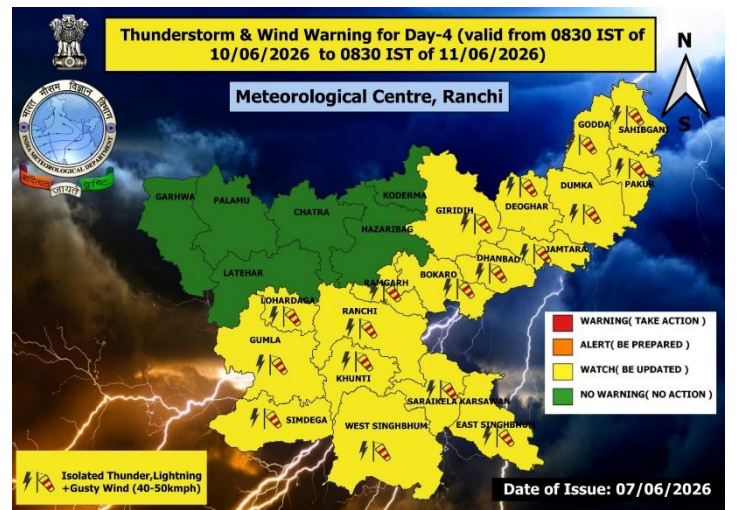
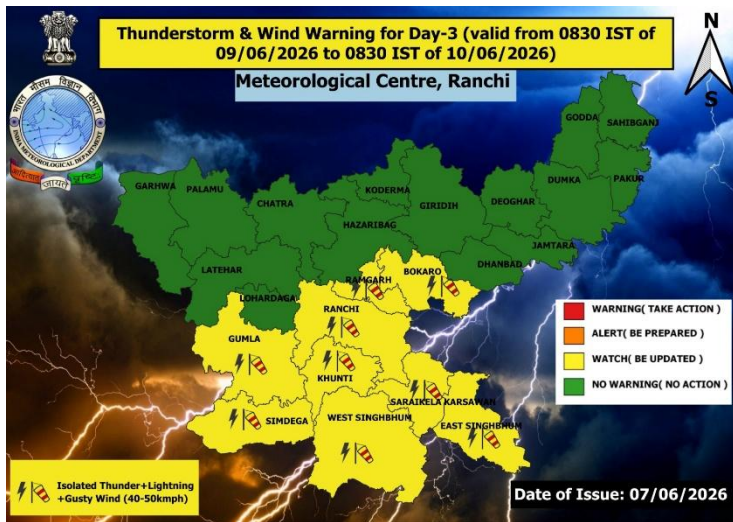
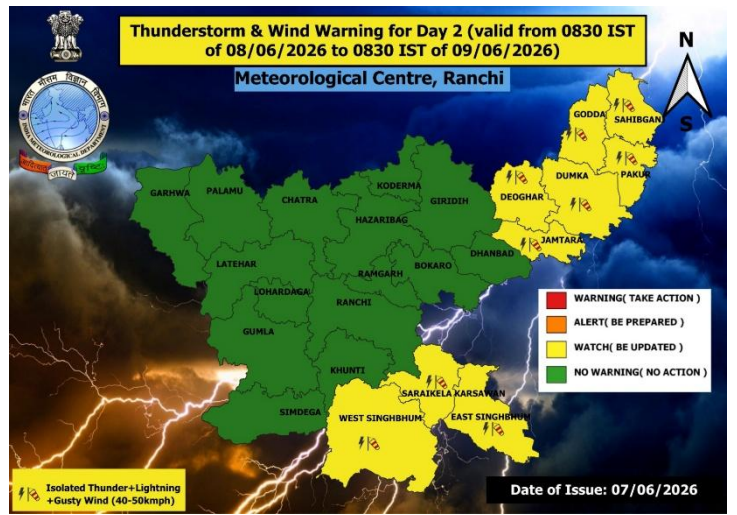
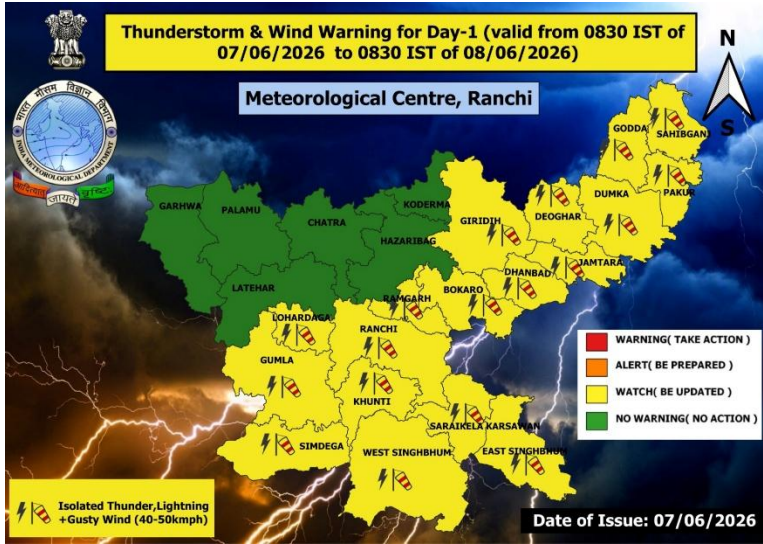
Website: <http://mausam.imd.gov.in/ranchi/>, e-mail: metranchi@gmail.com, mcranchi@rediffmail.com

Date: 07th June, 2026
Time of issue: MID-DAY

DISTRICT WEATHER FORECAST FOR JHARKHAND



WEATHER WARNING FOR JHARKHAND



DISTRICT'S TEMPERATURE FORECAST FOR JHARKHAND

Zone	Name of the Districts	Temperature Forecast for five days					
		Temperature	DAY 1	DAY 2	DAY 3	DAY 4	DAY 5
			07/06/2026	08/06/2026	09/06/2026	10/06/2026	11/06/2026
NE Jharkhand	Deoghar	Maximum	34	36	37	36	35
		Minimum	26	27	27	26	25
	Dhanbad	Maximum	34	36	37	36	35
		Minimum	26	27	27	26	25
	Dumka	Maximum	35	36	37	36	35
		Minimum	26	27	27	26	25
	Giridih	Maximum	34	35	36	37	33
		Minimum	25	25	26	25	24
	Godda	Maximum	36	37	38	37	36
		Minimum	27	28	28	27	26
	Jamtara	Maximum	34	36	37	36	35
		Minimum	26	27	27	26	25
Pakur	Maximum	36	37	38	37	36	
	Minimum	27	28	28	27	26	
Sahibganj	Maximum	35	36	37	36	35	
	Minimum	27	28	28	27	26	
NW Jharkhand	Koderma	Maximum	35	37	38	39	38
		Minimum	25	26	26	27	25
	Chatra	Maximum	36	38	40	40	38
		Minimum	25	26	27	27	26
	Garhwa	Maximum	40	40	41	42	42
		Minimum	27	28	28	28	27
	Latehar	Maximum	32	34	35	35	33
		Minimum	23	24	24	24	23
	Lohardaga	Maximum	34	36	37	37	35
		Minimum	24	25	25	24	24
Palamu	Maximum	40	40	41	42	40	
	Minimum	27	28	28	28	27	
Central Jharkhand	Bokaro	Maximum	37	38	38	38	36
		Minimum	24	25	25	25	24
	Ramgarh	Maximum	35	36	37	38	36
		Minimum	23	24	24	23	23
	Hazaribag	Maximum	35	36	37	38	36
		Minimum	24	25	25	24	24
	Ranchi	Maximum	34	35	36	37	35
		Minimum	24	25	25	24	24
	Khunti	Maximum	34	35	36	37	35
		Minimum	25	26	26	25	25
Gumla	Maximum	34	35	36	37	35	
	Minimum	24	25	25	24	24	
South Jharkhand	East Singhbhum	Maximum	37	39	39	39	37
		Minimum	25	26	27	27	25
	Seraikela	Maximum	37	39	39	39	37
		Minimum	24	25	26	26	24
	West Singhbhum	Maximum	36	38	39	39	37
		Minimum	24	25	26	26	25
Simdega	Maximum	35	37	38	38	36	
	Minimum	24	24	25	24	23	

(Dr. Baburaj P.P.)
Scientist-D and Head,
Meteorological Centre, Ranchi

Distribution of rainfall		Colour code for WARNING	Probabilistic Forecast	
% of rainfall stations	Category			
76% or more	WS (Most)	WARNING (TAKE ACTION)	Unlikely	<25 %
51-75%	FWS (Many)	ALERT (BE PREPARED)	Likely	25 – 50 %
26-50%	SCT (Few)	WATCH (BE UPDATED)	Very Likely	50 – 75 %
Less than 25 %	ISOL	NO WARNING (NO ACTION)	Most Likely	> 75 %
0.0 mm in all the stations	DRY			
RS – Rain, TS – Thunder Shower, SQ – Squall				

“Kindly download and use "MAUSAM App" for location specific forecast and warning, Meghdoot App for Agromet advisory and Damini App for Lightning warning ”.