



**Government of India
Ministry of Earth Sciences
India Meteorological Department**



Press Release

Date: 29th June, 2025

Time of Issue: 1345 hours IST

Subject: (i) The Southwest Monsoon has covered the entire country on 29th June, 2025, against the normal date of 08th July.

(ii) Heavy to very heavy rainfall activity likely to continue over many parts of Northwest, Central, East & Northeast India during next 7 days, with isolated extremely heavy falls over Jharkhand on 29th & 30th and Odisha on 29th June.

Southwest Monsoon (Annexure I):

- ❖ **The Southwest Monsoon has further advanced into remaining parts of Rajasthan, West Uttar Pradesh and Haryana and entire Delhi today, the 29th June 2025. Thus, it has covered the entire country on 29th June, 2025, against the normal date of 08th July (9 days before the normal date of covering the entire India).**
- ❖ The monsoon trough at mean sea level passes through Firozpur, Sonipat, Ayodhya, Gaya, Purulia, centre of the low pressure area over Northwest Bay of Bengal and adjoining West Bengal and Bangladesh coasts and thence southeastwards to northeast Bay of Bengal.

Realised weather during past 24 hours till 0830 hours IST of today, the 29th June, 2025 (Annexure II):

- ❖ **Heavy to very heavy rainfall with extremely heavy falls** recorded at isolated places over Odisha, Jharkhand.
- ❖ **Heavy to very heavy rainfall** has been recorded at isolated places over Andaman & Nicobar Islands, Himachal Pradesh, Haryana, Assam & Meghalaya; **Heavy rainfall** at isolated places over Gangetic West Bengal, Punjab, West Uttar Pradesh, East Rajasthan, West Madhya Pradesh, Vidarbha, Chhattisgarh, Madhya Maharashtra, Gujarat Region, Tamil Nadu, Arunachal Pradesh, Nagaland, Manipur, Mizoram & Tripura, Kerala, Coastal & South Interior Karnataka
- ❖ **Thunderstorm accompanied with Squally/Gusty winds with speed 40-70 kmph** at isolated places over Tamil Nadu, Madhya Maharashtra, Andaman & Nicobar Islands, West Madhya Pradesh, Punjab, Haryana, Konkan & Goa, Marathwada, Bihar, East Uttar Pradesh, Odisha, East Madhya Pradesh, Kerala, Coastal Andhra Pradesh, Telangana and Karnataka.

For more details of realised weather, kindly refer [Annexure I](#),

i. Weather Systems, Forecast and Warnings (refer to [Annexure III & IV](#)):

- ❖ A **low pressure area** has formed over Northwest Bay of Bengal and adjoining West Bengal and Bangladesh coasts at 0530 hrs IST of today, the 29th June and persisted over the same region at 0830 hrs IST of today, the 29th June 2025. It is likely to move slowly west-northwestwards across North Odisha, Gangetic West Bengal & Jharkhand during next 2 days.
- ❖ The **low-pressure area** over Saurashtra & Kutch and adjoining south Rajasthan has become less marked at 0830 hrs IST of today, the 29th June 2025. However, the associated cyclonic circulation lies over south Rajasthan & adjoining north Gujarat in lower tropospheric levels.
- ❖ The **east-west trough** now runs from above cyclonic circulation over south Rajasthan & adjoining north Gujarat to the cyclonic circulation associated with the low pressure area over northwest Bay of Bengal and adjoining West Bengal and Bangladesh coasts in middle tropospheric levels tilting southward with height.
- ❖ An **upper air cyclonic circulation** lies over north Haryana and another over central parts of south Uttar Pradesh in lower tropospheric levels.
- ❖ An **upper air cyclonic circulation** lies over central parts of north Arabian Sea extends upto middle tropospheric levels.

Under the influence of these systems, the following weather is likely:

East & Central India:

- ✓ **Extremely heavy rainfall (>20 cm/24 hours) likely at isolated places over Jharkhand on 29th & 30th June, Odisha on 29th June.**
- ✓ Isolated **heavy rainfall** over Jharkhand, Odisha, Bihar, Madhya Pradesh, Chhattisgarh during 29th June-05th July; Vidarbha during 29th June-02nd July, Andaman & Nicobar Islands on 29th, Sub-Himalayan West Bengal & Sikkim during

30th June-05th July, Gangetic West Bengal during 30th June-01st July and on 04th & 05th July with **very heavy rainfall** over Madhya Pradesh, Bihar during 30th June-02nd July, Vidarbha, Chhattisgarh on 30th June & 01st July, Gangetic West Bengal on 29th June, Odisha during 30th June-05th July, Jharkhand on 01st July.

- ✓ Light/moderate rainfall at most/many places accompanied with **thunderstorm, lightning & gusty winds speed reaching 30-40 kmph** likely over the region during next 7 days.

✓

Northwest India:

- ✓ Isolated **heavy rainfall** likely over Himachal Pradesh, Uttarakhand, Uttar Pradesh during 29th June-05th July; Punjab, Haryana & Chandigarh during 29th June-03rd July; Rajasthan during 02nd-05th July with **very heavy rainfall over Uttarakhand during 29th June-03rd July; Himachal Pradesh, Punjab, Haryana on 29th & 30th June; West Uttar Pradesh during 29th June-02nd July, East Uttar Pradesh on 30th June & 01st July, East Rajasthan on 04th & 05th July.**
- ✓ Light/moderate rainfall at most/many places accompanied with **thunderstorm, lightning & gusty winds speed reaching 30-40 kmph** likely over Northwest India during next 7 days.

West India:

- ✓ **Heavy to very heavy rainfall** at isolated places likely over Konkan & Goa, Ghat areas of Madhya Maharashtra, Gujarat state during next 7 days, over Marathwada on 29th & 30th June.

Northeast India:

- ✓ Light/moderate rainfall at most places accompanied with **thunderstorm, lightning and isolated heavy rainfall** likely to continue over Northeast India during next 7 days with **very heavy rainfall over Arunachal Pradesh, Assam & Meghalaya, Nagaland, Manipur, Mizoram & Tripura during 02nd -05th July.**

South Peninsular India:

- ✓ Isolated **heavy rainfall** likely over Kerala & Mahe on 29th June, 03rd & 04th July, Coastal Karnataka on 29th and during 02nd-05th July, South Interior Karnataka during 02nd-05th July.
- ✓ **Strong surface winds** (speed reaching 40-50 kmph) very likely over South Peninsular India during next 7 days.
- ✓ Light/moderate rainfall at many/some places over Kerala & Mahe, Lakshadweep, Coastal Karnataka; isolated to scattered rainfall accompanied with isolated **thunderstorm, lightning** over Coastal Andhra Pradesh & Yanam, Telangana, Rayalaseema during next 5 days.

Hot & Humid Weather warning:

- ❖ **Hot & humid weather** is likely to prevail over plains of Assam on 29th, Coastal Andhra Pradesh & Yanam during 29th June-01st July.

Fishermen Warnings:

- ❖ Fishermen are advised to avoid venturing into the following from 29th June to 04th July 2025 to the following Areas:

Arabian Sea:

- ❖ Along and off Gujarat coast, Along and off the Somalia coast and adjoining sea areas, Oman and adjoining Yemen coast & adjoining sea areas, most parts of north Arabian Sea, over central & adjoining north, south Arabian Sea during 29th June to 04th July, Konkan coasts for 29th June, 02nd & 03rd July, along and off north Konkan coast for 30th June & 01st July; along and off Goa, Karnataka, Kerala coasts & Lakshadweep area for day 1 (29th June).

Bay of Bengal:

- ❖ Along and off north Andhra Pradesh for 29th June & 02nd July, off north Andhra Pradesh coast for 30th June & 01st July; along and off Odisha coast during 29th June to 03rd July, and west Bengal coast during 29th June to 03rd July. Over many parts of central & north Bay of Bengal and some parts of southeast Bay of Bengal during 29th June to 02nd July and some parts of westcentral & north Bay of Bengal on 01st July; over the Gulf of Mannar during 29th June to 04th July, over the Andaman Sea for 29th & 30th June.

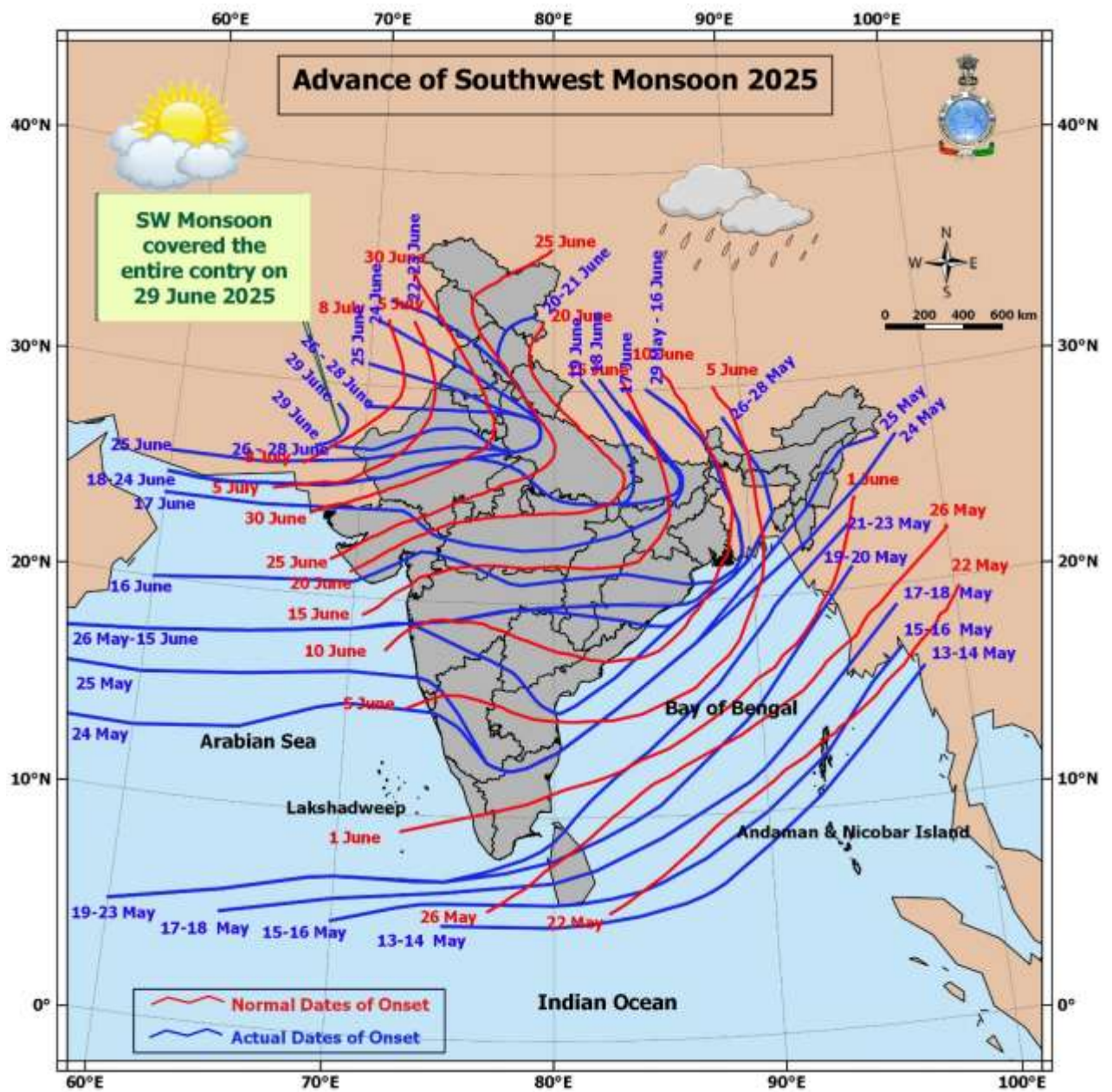
Total suspension of fishing operations is suggested over above mentioned areas and dates.

ii. Weather conditions and forecast over Delhi/NCR during 29th June to 02nd July, 2025 (Annexure V)

For more details, kindly refer National Weather Bulletin:

https://mausam.imd.gov.in/responsive/all_india_forecast_bulletin.php

For District wise warnings refer: <https://mausam.imd.gov.in/responsive/districtWiseWarningGIS.php>



Rainfall recorded (in cm) during past 24 hours till 0830 hours IST of today, the 29th June:

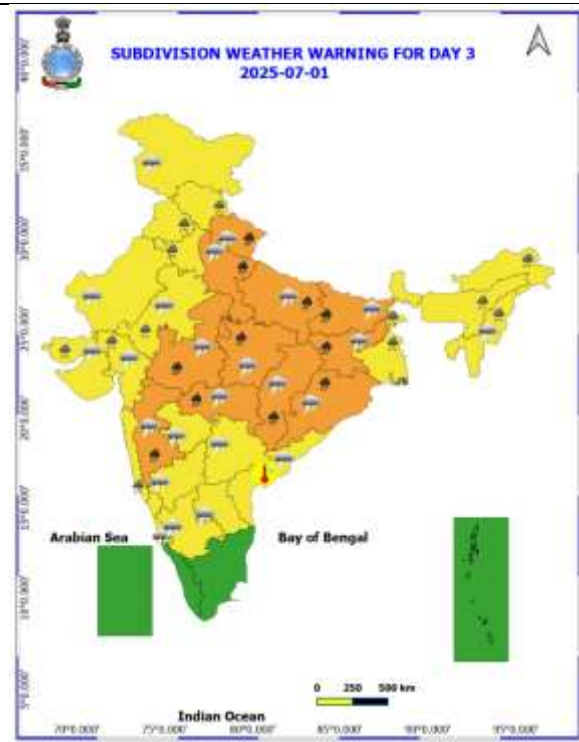
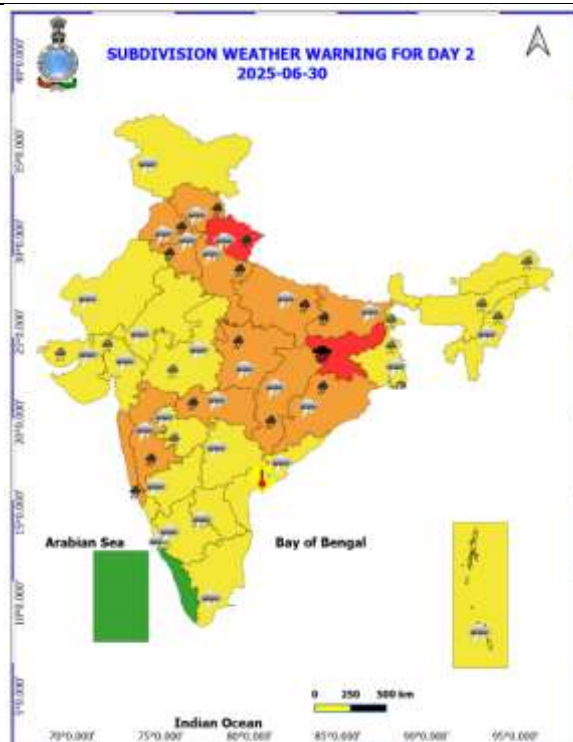
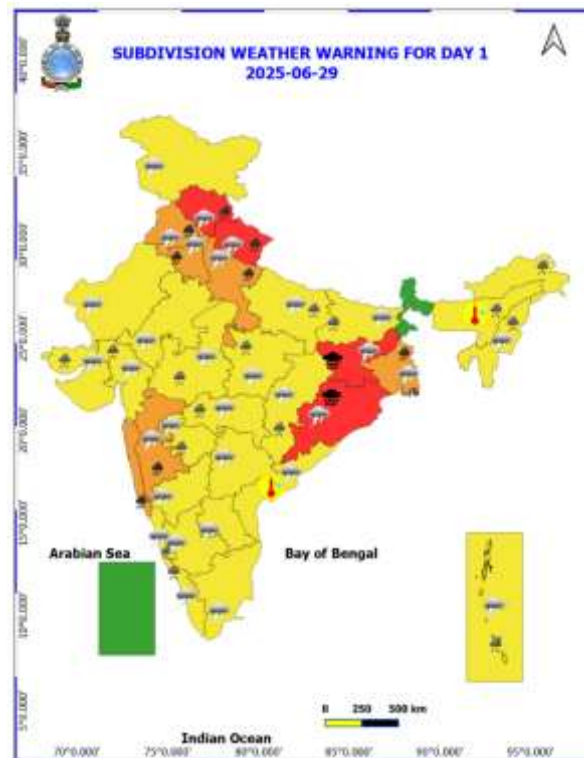
- ❖ **Odisha:** Chandua Kuliana (dist Mayurbhanj) 32; Jamsolaghat (dist Mayurbhanj) 28; Suliapada (dist Mayurbhanj), Sarasakana (dist Mayurbhanj) 25 Each; Chandanpur (dist Mayurbhanj) 22; Bangiriposi (dist Mayurbhanj) 20; Samakhunta (dist Mayurbhanj) 18; Jaleswar (dist Balasore) 15; Khaira (dist Balasore) 12; Udala (dist Mayurbhanj), Sonepur (dist Sonepur), Rajghat (dist Balasore), Oupada (dist Balasore) 11 Each; Hatadihi (dist Keonjhar), Bijatala (dist Mayurbhanj), Kusumi (dist Mayurbhanj) 10 Each; Atabira (dist Bargarh), Kaptipada (dist Mayurbhanj), Rairangpur (dist Mayurbhanj) 9 Each; Gaisilet (dist Bargarh), Talcher (dist Angul), Boudhgarh (dist Boudhgarh), Jaipur (dist Balasore), Birmaharajpur (dist Sonepur), Muruda (dist Mayurbhanj) 8 Each; Kantamal (dist Boudhgarh), Nilgiri (dist Balasore), Athmalik (dist Angul), Bhuban (dist Dhenkanal), Tiring (dist Mayurbhanj), Chendipada (dist Angul), Rajnagar (dist Kendrapara), Angul (dist Angul) 7 Each;
- ❖ **Jharkhand:** Baharagora (dist East Singhbhum) 31; Ghatsila (dist East Singhbhum) 30; Chakulia (dist East Singhbhum) 13; Potka (dist East Singhbhum) 10; Jamshedpur AP (dist East Singhbhum), Jamshedpur (dist East Singhbhum), Hazaribagh Kvk AWS (dist Hazaribagh), Boram (dist East Singhbhum), Garu (dist Latehar) 7 Each;
- ❖ **Uttarakhand:** Ganganagar (dist Rudrapur) 19; Narendranagar (dist Garhwal Tehri) 17; Jollygrant (dist Dehradun) 15; Rishikesh (dist Dehradun) 11; Kotdwara (dist Garhwal Pauri) 10; Banbasa (dist Champawat) 9; Mussoorie (dist Dehradun), Jakholi (dist Rudrapur), Dhanaulti (dist Garhwal Tehri) 8 Each; Landsdown (dist Garhwal Pauri), Deoprayag (dist Garhwal Tehri), Dehra Dun (dist Dehradun) 7 Each;
- ❖ **Andaman & Nicobar Islands:** Long Island (dist North & Middle Andaman) 14; Port Blair (dist South Andaman) 12; Maya Bandar (dist North & Middle Andaman) 10;
- ❖ **Assam & Meghalaya:** Bihpuria AWS (dist Lakhimpur) 13; Ranganadi Nt Xing (dist Lakhimpur) 7;
- ❖ **Himachal Pradesh:** Jogindarnagar (dist Mandi) 13; Kasauli (dist Solan), Paonta (dist Sirmaur), Kahu (dist Bilaspur) 12 Each; Sundarnagar (dist Mandi) 10; Simla (dist Shimla), Kufri AWS (dist Shimla), Bilaspur Sadar (dist Bilaspur) 9 Each; Dharampur (dist Solan), Solan (dist Solan), Sujanpur Tira (dist Hamirpur) 8 Each; Pandoh (dist Mandi) 7;
- ❖ **Haryana-Chandigarh:** Chandigarh (dist Chandigarh) 12; Chandigarh AWS (dist Chandigarh) 11; Ambala (dist Ambala), Ambala Cantt (dist Ambala), Tajewala (dist Yamuna Nagar) 9 Each; Ambala REV (dist Ambala), Chandigarh IAF (dist Chandigarh) 8 Each; Partapnagar REV (dist Yamuna Nagar) 7;
- ❖ **Punjab:** Bharatgarh (dist Rupnagar) 11; Nawanshahr (dist Sbs Nagar), Ferozpur Kvk AWS (dist Ferozpur), Ghanauli (dist Rupnagar), Kotla (dist Rupnagar) 7 Each;
- ❖ **Gangetic West Bengal:** Amfu Kharagpur (dist West Midnapore) 10; Bankura(CWC) (dist Bankura) 9; Kansabati Dam (dist Bankura), Bankura (dist Bankura) 8 Each;
- ❖ **Tamil Nadu, Puducherry & Karaikal:** Chinnakalar (dist Coimbatore) 9;
- ❖ **Coastal Karnataka:** Bantwal (dist Dakshina Kannada) 9; Castle Rock (dist Uttara Kannada) 7; **West Madhya Pradesh:** Mau (dist Bhind) 9; Manawar (dist Dhar) 7;
- ❖ **Gujarat Region:** Chikhli (dist Navsari) 9; Valsad (dist Valsad) 8; Jambughoda (dist Panchmahal), Khargam (dist Navsari) 7 Each;
- ❖ **East Uttar Pradesh:** Dabri Fmo (dist Farrukhabad) 9; Balrampur (dist Balrampur) 7;
- ❖ **West Uttar Pradesh:** Bijnor (dist Bijnor) 8; Aligarh (dist Aligarh) 7;
- ❖ **Madhya Maharashtra:** Shahuwadi (dist Balrampur) 7;
- ❖ **Chhattisgarh:** Chando (dist Balrampur) 7;
- ❖ **East Rajasthan:** Kotda SR (dist Udaipur) 7;
- ❖ **South Interior Karnataka:** Agumbe Emo (dist Shivamogga), Bhagamandala (dist Kodagu) 7 Each;
- ❖ **Kerala & Mahe:** Peermade To (dist Idukki), Perumpavur (dist Ernakulam) 7 Each.

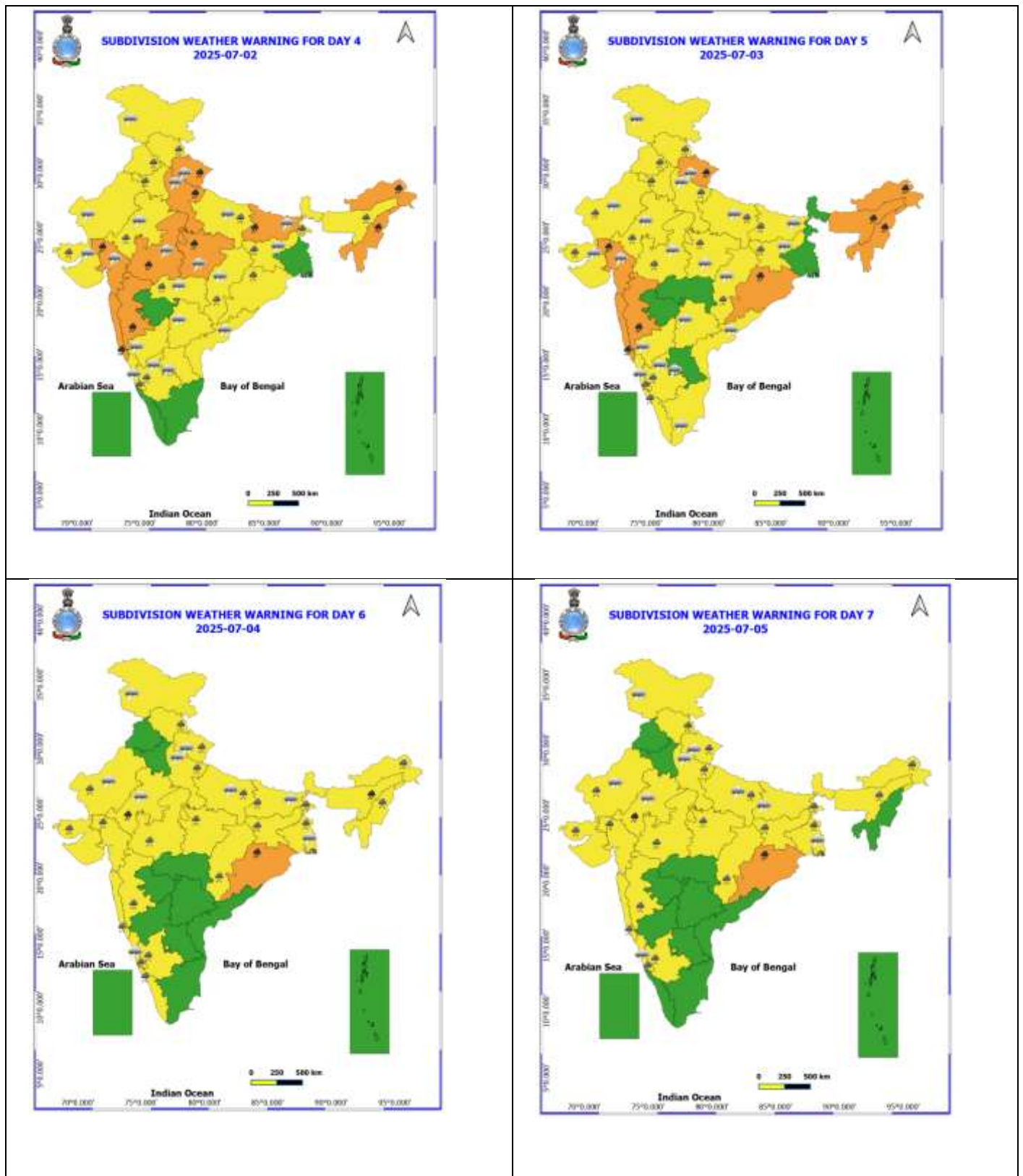
Realised Gusty Winds (kmph) During Past 24hours ending at 0830 hrs IST of today the 29th June:

- ❖ **Tamil Nadu:** Natham_Isro(70), Tenkasi(50), Veda sandur(52), Kadavur (Taluk_Office)(48), Thiruchendur(43),
- ❖ **Madhya Maharsashtra:** Vilholi (Nashik) -67 Kmph, Mahabaleshwar (Satara) -59 Kmph, Kalwan (Nasik) And Kurvande (Pune) - 57 Kmph;
- ❖ **Andaman & Nicobar Islands:** Sri Vijayapuram (58); Swaraj Dweep (48); Ferrargunj, Shaheed Dweep (37);
- ❖ **West Madhya Pradesh:** Ujjain 57kmph;
- ❖ **Punjab:** Moga=56,Ropar=37;
- ❖ **Haryana:** Mewat=56,Pandu_Pindara=43,Karnal=39;
- ❖ **Konkan & Goa:** Santacruz - 50 Kmph, Palghar - 46 Kmph, Dapoli (Ratnagiri) - 43 Kmph;
- ❖ **Marathawada:** Chh. Sambhaji Nagar - 48kmph, Jalna - 44kmph,Ambejogai (Beed)-44 Kmph;
- ❖ **Bihar:** Dumaraon (44);
- ❖ **East Uttar Pradesh:** Integral University(Lucknoow) & Raebareli (Aws)-44 Each, Balrampur(Aws)-43;
- ❖ **Odisha:** Cuttack, Jagatsinghpur (41); Ranital, Kendrapara (37); Pitapalli, Sonepur (30);
- ❖ **East Madhya Pradesh:** Anuppur 41kmph;

Table-1								
7 Days Rainfall Forecast								
S.No.	Subdivision	29- Jun	30- Jun	1- Jul	2- Jul	3- Jul	4- Jul	5- Jul
		Day 1	Day 2	Day 3	Day 4	Day 5	Day 6	Day 7
1	ANDAMAN & NICOBAR ISLANDS	WS	WS	WS	WS	WS	FWS	FWS
2	ARUNACHAL PRADESH	FWS	FWS	FWS	FWS	FWS	FWS	FWS
3	ASSAM & MEHGHALAYA	SCT	FWS	FWS	FWS	FWS	FWS	FWS
4	NAGALAND, MANIPUR, MIZORAM AND TRIPURA	FWS	FWS	WS	WS	WS	WS	WS
5	SUB HIMALAYAN WEST BENGAL & SIKKIM	FWS	FWS	WS	WS	WS	FWS	FWS
6	GANGETIC WEST BENGAL	WS	WS	WS	WS	FWS	FWS	WS
7	ODISHA	WS	WS	WS	WS	FWS	FWS	WS
8	JHARKHAND	WS	WS	WS	WS	WS	WS	WS
9	BIHAR	SCT	FWS	FWS	FWS	FWS	FWS	FWS
10	EAST UTTAR PRADESH	FWS	WS	WS	FWS	FWS	FWS	FWS
11	WEST UTTAR PRADESH	SCT	WS	WS	FWS	FWS	FWS	FWS
12	UTTARAKHAND	WS	WS	WS	FWS	FWS	FWS	FWS
13	HARYANA, CHANDIGARH & DELHI	FWS	FWS	WS	WS	FWS	FWS	FWS
14	PUNJAB	FWS	FWS	WS	WS	FWS	FWS	FWS
15	HIMACHAL PRADESH	FWS	WS	WS	FWS	FWS	FWS	FWS
16	JAMMU AND KASHMIR AND LADAKH	SCT	SCT	SCT	SCT	SCT	SCT	SCT
17	WEST RAJASTHAN	ISOL	ISOL	ISOL	ISOL	SCT	FWS	FWS
18	EAST RAJASTHAN	SCT	SCT	SCT	FWS	FWS	WS	WS
19	WEST MADHYA PRADESH	FWS	FWS	FWS	WS	WS	WS	WS
20	EAST MADHYA PRADESH	FWS	FWS	FWS	WS	WS	WS	WS
21	GUJRAT REGION	WS	WS	WS	WS	WS	WS	WS
22	SAURASHTRA & KUTCH	WS	WS	WS	WS	WS	WS	WS
23	KONKAN & GOA	WS	WS	WS	WS	WS	WS	WS
24	MADHYA MAHARASHTRA	FWS	SCT	SCT	FWS	FWS	SCT	SCT
25	MARATHWADA	SCT	SCT	ISOL	ISOL	ISOL	ISOL	ISOL
26	VIDARBHA	SCT	SCT	SCT	FWS	WS	FWS	FWS
27	CHHATTISGARH	FWS	SCT	FWS	FWS	FWS	FWS	FWS
28	COASTAL ANDHRA PRADESH	SCT	SCT	SCT	FWS	FWS	FWS	SCT
29	TELANGANA	ISOL	ISOL	ISOL	SCT	SCT	ISOL	ISOL
30	RAYALASEEMA	ISOL	ISOL	ISOL	ISOL	ISOL	ISOL	ISOL
31	TAMILNADU & PUDUCHERRY	ISOL	ISOL	ISOL	ISOL	ISOL	ISOL	ISOL
32	COSTAL KARNATAKA	WS	WS	WS	WS	WS	WS	WS
33	NORTH INTERIOR KARNATAKA	SCT	ISOL	ISOL	SCT	SCT	SCT	SCT
34	SOUTH INTERIOR KARNATAKA	SCT	ISOL	ISOL	SCT	FWS	FWS	SCT
35	KERALA AND MAHE	WS	FWS	FWS	FWS	FWS	FWS	FWS
36	LAKSHADWEEP	FWS	SCT	SCT	FWS	FWS	FWS	FWS

- As the lead period increases forecast accuracy decreases.





- Action may be taken based on ORANGE AND REDCOLOUR warnings.
- Vulnerable regions likely urban and hilly areas action may be initiated for heavy rainfall warning.
- As the lead period increases forecast accuracy decreases.

Detailed districtwise MultiHazard weather warning for next five days available at <https://mausam.imd.gov.in/responsive/districtWiseWarningGIS.php>

Weather forecast over Delhi/NCR during 29th June to 02nd July 2025**Past Weather:**

There has been fall in the minimum temperature up to 1 - 2°C and fall in maximum temperature up to 1 - 3°C over Delhi/NCR during the past 24 hours. The maximum and minimum temperatures over Delhi were around 36 to 37 °C and 24 to 27°C, respectively. The minimum temperature was below normal up to 1 - 3°C and maximum temperatures were below normal up to 1 - 3°C. Partly cloudy sky conditions with predominant surface wind from the southeast direction with wind speeds up to 18 kmph prevailed during the past 24 hours. Generally cloudy sky conditions with wind speed less than 06 kmph from the west direction prevailed over the region in the forenoon today.

Weather Forecast:

29.06.2025: Generally cloudy sky. Light to moderate rain/thunderstorm/lightning accompanied with gusty wind (speed 30 – 40 kmph) during thunderstorm. The maximum temperatures over Delhi are likely to be in the range of 31 to 33°C. The maximum temperature will be below normal up to 4 - 6°C. The predominant surface wind will likely be from the southwest direction with a wind speed of less than 10 kmph in the afternoon. The wind speed will gradually increase becoming 10-15 kmph from the southwest direction during evening and night.

30.06.2025: Generally cloudy sky. Light to moderate rain accompanied with thunderstorm/lightning. The maximum and minimum temperatures over Delhi are likely to be in the range of 31 to 33°C and 25 to 27°C respectively. The minimum temperature will be below normal up to 1 - 2°C and the maximum temperature will be below normal up to 4 to 6°C. The predominant surface wind will likely be from the southwest direction with a wind speed of less than 10 kmph during the morning hours. The wind speed will gradually decrease becoming 08-10 kmph from the south direction in the afternoon. It will decrease becoming less than 08 kmph from the southwest direction during evening and night.

01.07.2025: Generally cloudy sky. Light to moderate rain accompanied with thunderstorm/lightning. The maximum and minimum temperatures over Delhi are likely to be in the range of 32 to 34°C and 24 to 26°C respectively. The minimum temperature will be below normal up to 1 to 3°C and the maximum temperature will be below normal up to 3 to 5°C. The predominant surface wind will likely be from the southwest direction with a wind speed of less than 10 kmph during the morning hours. The wind speed will gradually decrease becoming less than 08 kmph from the northwest direction in the afternoon. It will increase to less than 12 kmph from the southwest direction during the evening and night.

02.07.2025: Partly cloudy sky. Light rain accompanied with thunderstorm/lightning. The maximum and minimum temperatures over Delhi are likely to be in the range of 33 to 35°C and 25 to 27°C respectively. The minimum temperature will be below normal up to 1 to 2 °C and the maximum temperature will be below normal up to 2 to 4°C. The predominant surface wind will likely be from the southwest direction with a wind speed of less than 15 kmph during the morning hours. The wind speed will gradually increase becoming less than 20 kmph from the northwest direction in the afternoon. It will decrease to less than 12 kmph from the southwest direction during the evening and night.

Impact expected and Action Suggested due to thunderstorm with lightning/gusty winds:

- Be cautious and take precautionary measures, though there is the likelihood of thunderstorm/lightning.
- Breaking of tree branches, uprooting of large avenue trees, Large dead limbs blown from trees, Damage to standing crops, Minor to major damage to power and communication lines due to breaking of branches, Partial damage to vulnerable structures due to strong winds, Loose objects may fly.
- People are advised to keep a watch on the weather for worsening conditions and be ready to move to safer places accordingly, stay indoors, close windows & doors and avoid travel if possible, take safe shelters; do not take shelter under trees, do not lie on concrete floors and do not lean against concrete walls, unplug electrical/ electronic appliances, immediately get out of water bodies, keep away from all the objects that conduct electricity.

Impact & Action Suggested due to extremely heavy rainfall/ very heavy rainfall:

- ✓ **Extremely heavy rainfall (>20 cm/24 hours) likely at isolated places over Jharkhand on 29th & 30th June, Odisha on 29th June.**
- ✓ **Heavy to very heavy rainfall** at isolated places over **Uttarakhand during 29th June-03rd July, Himachal Pradesh, Punjab, Haryana on 29th & 30th June;** Gangetic West Bengal on 29th June, Odisha during 30th June-05th July, Jharkhand on 01st July, West Uttar Pradesh during 29th June-02nd July, Madhya Pradesh, Bihar during 30th June-02nd July, Vidarbha, Chhattisgarh, East Uttar Pradesh on 30th June & 01st July, East Rajasthan on 04th & 05th July, Arunachal Pradesh, Assam & Meghalaya, Nagaland, Manipur, Mizoram & Tripura during 02nd -05th July. over Konkan & Goa, Ghat areas of Madhya Maharashtra, Gujarat state during next 7 days.

Impact Expected

- Localized Flooding of roads, water logging in low lying areas and closure of underpasses mainly in urban areas of the above region.
- Occasional reduction in visibility due to heavy rainfall.
- Disruption of traffic in major cities due to water logging in roads leading to increased travel time.
- Minor damage to kutchha roads.
- Possibilities of damage to vulnerable structure.
- Localized Landslides/Mudslides/landslips/mudslips/landsinks/mudsinks.
- Damage to horticulture and standing crops in some areas due to inundation.
- It may lead to riverine flooding in some river catchments (for riverine flooding please visit Web page of CWC)

Action Suggested

- Check for traffic congestion on your route before leaving for your destination.
- Follow any traffic advisories that are issued in this regard.
- Avoid going to areas that face the water logging problems often.
- Avoid staying in vulnerable structure.

Agromet advisories for likely impact of Heavy / Heavy to Very Heavy / Extremely Heavy Rainfall

- In **Odisha**, postpone sowing of maize, green gram, papaya, banana and vegetable crops. Ensure proper drainage from already sown rice nurseries, fields of maize and vegetables to prevent waterlogging. Cover rice and vegetable nurseries with plastic sheets to prevent washing away of seeds. Provide strong wooden support for papaya and banana plants to avoid lodging due to strong winds.
- **Jharkhand** – Postpone sowing of pigeon pea, finger millet and paddy nurseries. Make necessary arrangements to drain out excess water from already sown maize fields, rice and vegetable nurseries. Cover the vegetable nursery with polythene sheets.
- **Gangetic West Bengal** - Make necessary arrangements to drain out excess water from the fields of rice nurseries and ginger to avoid water stagnation.
- In **Uttarakhand**, postpone sowing of rice nurseries. Ensure proper drainage facilities in pigeon pea, groundnut, maize, sugarcane, barnyard millet, finger millet, already sown rice nurseries, kidney beans, blackgram, green gram, vegetable and orchards. Harvest matured vegetables (pumpkin, tomato, okra, chilli, French bean etc.) and fruits and store in safe place. Tie the sugarcane plants together to avoid lodging. In **Bhabar and Tarai Zone** of **Uttarakhand**, postpone sowing of rice nurseries, soybean, kidney beans, blackgram and green gram. Keep the harvested produce of spring maize in safe place.
- In **Himachal Pradesh**, provide drainage in the fields of vegetables and fruit orchards. Remove weeds and lower leaves from tomato plants to reduce the occurrence of soil-borne diseases. Strengthen the support for creepers and tall vegetable crops (tomato, capsicum etc.). Harvest matured fruits of plum, pear, stone fruit and keep in safe places to minimize losses due to heavy rains. In **Mandi district**, postpone sowing of maize and transplanting of rice. Drain out excess water from rice nurseries and already sown maize field.
- **Punjab** - Drain out excess water from cotton, maize fields and orchards.
- **West Uttar Pradesh**, postpone sowing of maize. Drain out excess water from already sown maize, rice nurseries, vegetables, pigeon pea and sugarcane. Tie the sugarcane plants together to avoid lodging. In **East Uttar Pradesh**, postpone sowing of pigeon pea and black gram. Drain out excess water from vegetables, late sown rice, nurseries groundnut, green gram and maize.
- In **Chhattisgarh**, ensure proper drainage in rice nurseries.
- In **Gujarat** make necessary arrangements to drain out excess water in already sown rice nurseries, sugarcane fields, banana and mango plantations to prevent waterlogging. Provide support to sugarcane and banana to prevent lodging. In

Saurashtra & Kutch, drain out excess rain water from vegetable nurseries and horticultural plantations. Undertake propping in sugarcane with strong bamboo or tie the leaves together in a clump to protect against wind and heavy rain.

- In **Konkan & Goa**, make arrangements to drain out excess water from rice nurseries, fields of finger millet, groundnut and orchards to prevent waterlogging. In **ghat areas of Madhya Maharashtra**, drain out excess water from rice nurseries, vegetables and orchards to prevent waterlogging.
- In **West Madhya Pradesh**, postpone harvesting of maize. Postpone sowing of pearl millet, soybean, pigeon pea and paddy nurseries. Make necessary arrangements to drain out excess water from vegetables and orchards to avoid waterlogging. In **East Madhya Pradesh**, keep the harvested produce of maize, green gram and black gram in safe places. Ensure proper drainage in already sown / transplanted fields.
- In **Kerala**, ensure proper drainage facilities in rice nurseries, transplanted rice fields, coconut and banana plantations to prevent water logging. Undertake propping in banana to protect the plants from heavy rains.

Livestock / Fishery

- Keep the animals inside the shed during heavy rainfall and provide them balanced feed.
- Store feed and fodder in a safe place to prevent spoilage.
- Construct an outlet with proper netting around the ponds to drain out excess water, thereby preventing fish from escaping in case of overflow.

Agromet advisories for likely impact of Thunderstorm / Gusty Winds / Squally Winds

- Provide mechanical support to horticultural crops and staking or support to vegetables and young fruit plants / fruit-bearing plants to avoid lodging due to strong winds.

Flash flood guidance:

24 hours Outlook for the Flash Flood Risk (FFR) till 1130 IST of 30-06-2025 :

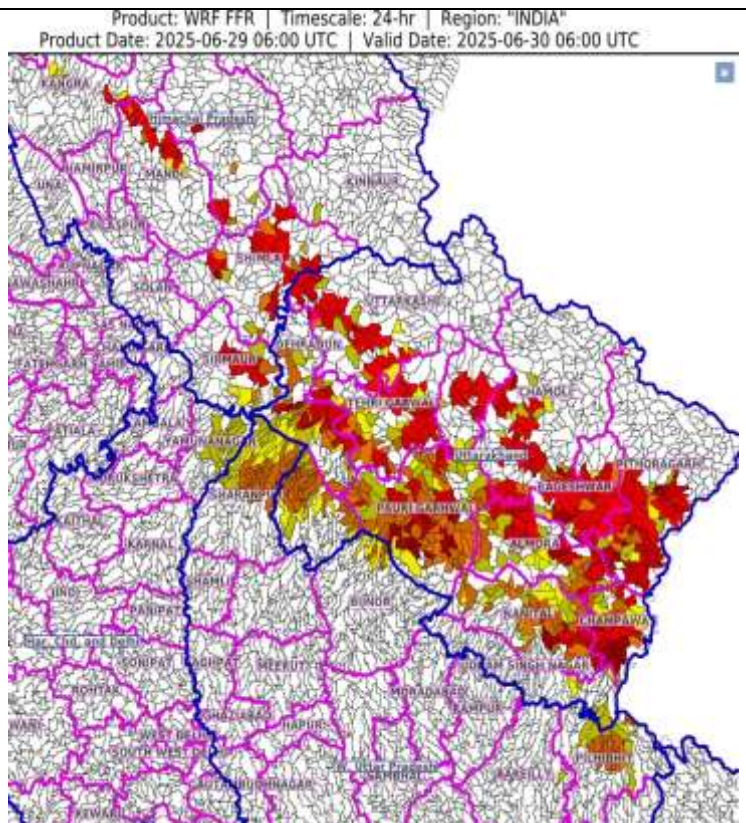
Moderate to High flash flood risk likely over few watersheds & neighbourhoods of following Met Sub-divisions during next 24 hours.

Himachal Pradesh - Kangra, Kinnaur, Kullu, Mandi, Shimla and Sirmour districts.
Uttarakhand - Almora, Bageshwar, Chamoli, Champawat, Dehradun, Haridwar, Nanital, Pauri Garhwal, Pithoragarh, Rudrapur, Tehri Garwal, Udham Singh Nagar and Uttarkashi districts.

West Uttar Pradesh - Bijnor, Pilibhit and Sharanpur districts.

Haryana - Chandigarh & Delhi - Yamunanagar district.

Surface runoff/ Inundation may occur at some fully saturated soils & low-lying areas over Area of Concern (AoC) as shown in map due to expected rainfall occurrence in next 24 hours.

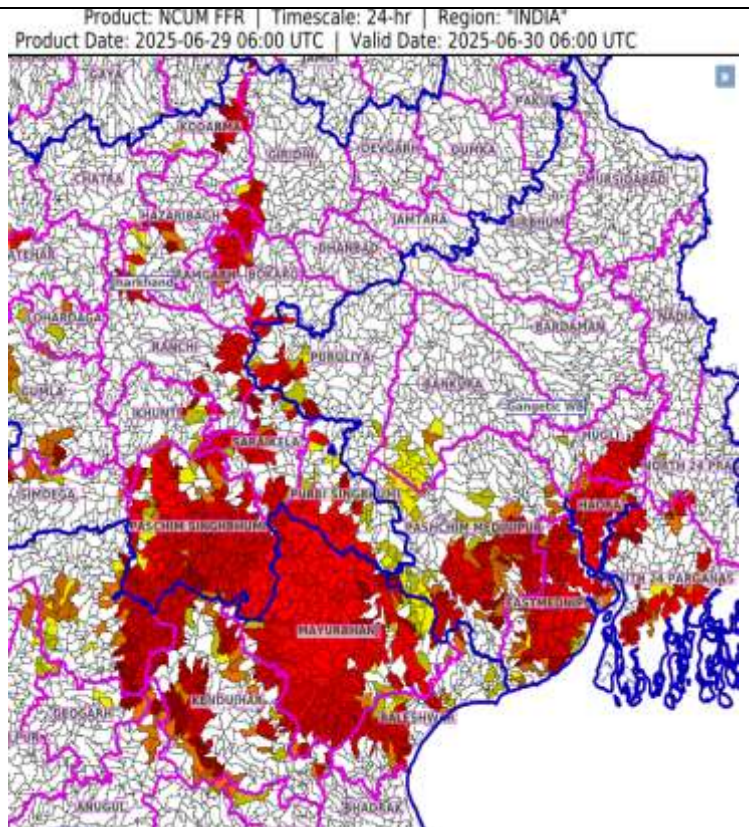


24 hours Outlook for the Flash Flood Risk (FFR) till 1130 IST of 30-06-2025 :

Moderate to High flash flood risk likely over few watersheds & neighbourhoods of following Met Sub-divisions during next 24 hours.

Odisha - Anugul, Baleshwar, Deogarh, Jajapur, Kendujhar, Mayurbhanj, Sambalpur and Sundargarh districts. Gangetic West Bengal - Bankura, Eastmednipur, Haora, Hugli, North 24 Pragana, Pashchim Medinipur, Puruliya and South 24 Parganas districts. Jharkhand - Bokaro, East Singhbhum, Giridih, Gumla, Hazaribagh, Khunti, Koderma, Lohardaga, Ramgarh, Ranchi, Saraikela, Simdega and West Singhbhum districts.

Surface runoff/ Inundation may occur at some fully saturated soils & low-lying areas over Area of Concern (AoC) as shown in map due to expected rainfall occurrence in next 24 hours.



Legends & abbreviations:

- ❖ **Heavy Rain:**64.5-115.5mm; **Very Heavy Rain:**115.6-204.4mm; **Extremely Heavy Rain:** >204.4mm.
- ❖ **Obsy:** Observatory; Automatic Weather Station; **ARG:** Automatic Rain Gauge; **dist:** District; **NH:** National Highway; **KVK:** Krishi Vigyan Kendra; **DVC:** Damodar Valley Corporation; **PTO:** Part Time Office, **Aero:** Aerodrome, **IAF:** Indian Air Force.
- ❖ **Region wise classification of meteorological Sub-Divisions:**
 - **Northwest India:** Western Himalayan Region (Jammu-Kashmir-Ladakh-Gilgit-Baltistan-Muzaffarabad, Himachal Pradesh and Uttarakhand); Punjab, Haryana-Chandigarh-Delhi; West Uttar Pradesh, East Uttar Pradesh, West Rajasthan and East Rajasthan.
 - **Central India:** West Madhya Pradesh, East Madhya Pradesh, Vidarbha and Chhattisgarh.
 - **East India:** Bihar, Jharkhand, Sub-Himalayan West Bengal & Sikkim; Gangetic West Bengal, Odisha and Andaman & Nicobar Islands.
 - **Northeast India:** Arunachal Pradesh, Assam & Meghalaya and Nagaland, Manipur, Mizoram & Tripura.
 - **West India:** Gujarat Region, Saurashtra & Kutch, Konkan & Goa, Madhya Maharashtra and Marathawada.
 - **South India:** Coastal Andhra Pradesh & Yanam, Telangana, Rayalaseema, Coastal Karnataka, North Interior Karnataka, South Interior Karnataka, Kerala & Mahe, Tamil Nadu, Puducherry & Karaikal and Lakshadweep.

LEGENDS

1. अंडमान और निकोबार द्वीपसमूह

2. अरुणाचल प्रदेश

3. असम और मेघालय

4. नागालैंड, मणिपुर, मिजोरम और त्रिपुरा

5. उप-हिमालयी पश्चिम बंगाल और सिक्किम

6. गंगीय पश्चिम बंगाल

7. ओडिशा

8. झारखंड

9. बिहार

10. पूर्वी उत्तर प्रदेश

11. पश्चिम उत्तर प्रदेश

12. उत्तराखंड

13. हरियाणा, चंडीगढ़ और दिल्ली

14. पंजाब

15. हिमाचल प्रदेश

16. जम्मू और कश्मीर और लद्दाख

17. पश्चिम राजस्थान

18. पूर्वी राजस्थान

19. पश्चिम मध्य प्रदेश

20. पूर्वी मध्य प्रदेश

21. गुजरात

22. सौराष्ट्र

23. कोंकण और गोवा

24. मध्य महाराष्ट्र

25. मराठवाड़ा

26. विदर्भ

27. छत्तीसगढ़

28. तटीय आंध्र प्रदेश और यनम

29. तेलंगाना

30. रायलसीमा

31. तमिलनाडु, पुडुचेरी और कराईकल

32. तटीय कर्नाटक

33. आंतरिक उत्तरी कर्नाटक

34. आंतरिक दक्षिणी कर्नाटक

35. केरल और माहे

36. लक्षद्वीप



1. Andaman & Nicobar Islands

2. Arunachal Pradesh

3. Assam & Meghalaya

4. Nagaland, Manipur, Mizoram & Tripura

5. Sub-Himalayan West Bengal & Sikkim

6. Gangetic West Bengal

7. Odisha

8. Jharkhand

9. Bihar

10. East Uttar Pradesh

11. West Uttar Pradesh

12. Uttarakhand

13. Haryana, Chandigarh & Delhi

14. Punjab

15. Himachal Pradesh

16. Jammu & Kashmir and Ladakh

17. West Rajasthan

18. East Rajasthan

19. West Madhya Pradesh

20. East Madhya Pradesh

21. Gujarat

22. Saurashtra

23. Konkan & Goa

24. Madhya Maharashtra

25. Marathwada

26. Vidarbha

27. Chhattisgarh

28. Coastal Andhra Pradesh & Yanam

29. Telangana

30. Rayalaseema

31. Tamilnadu, Puducherry & Karaikal

32. Coastal Karnataka

33. North Interior Karnataka

34. South Interior Karnataka

35. Kerala & Mahe

36. Lakshadweep

SPATIAL DISTRIBUTION (% of Stations reporting)

% Stations	Category	% Stations	Category
76-100	Widespread (WS/Most Places)	26-50	Scattered (SCT/A Few Places)
51-75	Fairly Widespread (FWS/Many Places)	1-25	Isolated (ISOL)



Fog



Heavy Snow



Cold Wave



Heavy Rain



Dust Storm



Cold Day



Very Heavy Rain



Heat Wave



Ground Frost



Extremely Heavy Rain



Warm Night



Thunder & Lightning



Hot Day



Hailstorm



Hot & Humid



Dust Raising Winds



Strong Surface Winds

COLOUR CODED WARNING

No Warning (No Action)

Watch (Be Aware)

Alert (Be Prepared To Take Action)

Warning (Take Action)

Probabilistic Forecast

Terms	Probability of Occurrence (%)
Unlikely	< 25
Likely	25 - 50
Very Likely	50 - 75
Most Likely	> 75

* Red colour warning does not mean "Red Alert", Red colour warning means "Take Action".

Forecast and Warning for any day is valid from 0830 hours IST of day till 0830 hours IST of next day.

For more details, kindly visit <https://mausam.imd.gov.in> or contact: 011-2434-4599

(Service to the Nation since 1875)

DEFINITION/CRITERIA

Rain/ Snow *

Heavy: 64.5 to 115.5 mm/cm *
Very Heavy: 115.6 to 204.4 mm/cm *
Extremely Heavy: > 204.4 mm/cm *

Heat Wave

When maximum temperature of a station reaches $\geq 40^{\circ}\text{C}$ for plains and $\geq 30^{\circ}\text{C}$ for hilly regions
(a) Based on Departure from normal

Heat Wave: Maximum Temperature Departure from normal 4.5°C to 6.4°C .

Severe Heat Wave: Maximum Temperature Departure from normal $\geq 6.5^{\circ}\text{C}$

(b). Based on Actual maximum temperature

Heat Wave: When actual maximum temperature $\geq 45^{\circ}\text{C}$.

Severe Heat Wave: When actual maximum temperature $\geq 47^{\circ}\text{C}$.

(c). Criteria for heat wave for coastal stations

When maximum temperature departure is $> 4.5^{\circ}\text{C}$ from normal. Heat Wave may be described provided maximum temperature $\geq 37^{\circ}\text{C}$.

Warm Night

When maximum temperature remains 40°C

Warm Night: When minimum temperature departure 4.5°C to 6.4°C .

Severe Warm Night: When minimum temperature departure $> 6.4^{\circ}\text{C}$.

Cold Wave

When minimum temperature of a station $\leq 10^{\circ}\text{C}$ for plains and $\leq 0^{\circ}\text{C}$ for hilly regions.

(a). Based on departure

Cold Wave: Minimum Temperature Departure from normal -4.5°C to -6.4°C .

Severe Cold Wave: Minimum Temperature Departure from normal $\leq -6.5^{\circ}\text{C}$

(b) Based on actual Minimum Temperature (for Plains only)

Cold Wave: When Minimum Temperature is $\leq 4.0^{\circ}\text{C}$

Severe Cold Wave: When Minimum Temperature is $\leq 2.0^{\circ}\text{C}$

(c) For Coastal Stations

When Minimum Temperature departure is $\leq -4.5^{\circ}\text{C}$ & actual Minimum Temperature is $\leq 15^{\circ}\text{C}$

Cold Day

When minimum temperature of a station $\leq 10^{\circ}\text{C}$ for plains and $\leq 0^{\circ}\text{C}$ for hilly regions
Based on departure

Cold Day: Maximum Temperature Departure from normal -4.5°C to -6.4°C .

Severe Cold Day: Maximum Temperature Departure from normal $\leq -6.5^{\circ}\text{C}$

Fog

Phenomenon of small droplets suspended in air and the horizontal visibility $< 1\text{km}$

Moderate Fog: When the visibility between 500-200 metres

Dense Fog: when the visibility between 50- 200 metres

Very Dense Fog: when the visibility < 50 metres

Thunderstorm

Sudden electrical discharges manifested by a flash of light (Lightning) and a sharp rumbling sound (thunder)

Dust/Sand Storm

An ensemble of particles of dust or sand energetically lifted to great heights by a strong and turbulent wind.

Frost

Ice deposits on ground

Air temperature $\leq 4^{\circ}\text{C}$ (over Plains)

Squall

A strong wind that rises suddenly, lasts for atleast 1 minute.

Moderate: Wind speed 52-61 kmph

Severe: Wind speed 62-67 kmph

Very Severe: Wind speed > 67 kmph

Sea State

Effect of various waves in the sea over specific area

Rough to very rough: Wind speed 41-62 kmph (22-33 knots) & Wave height 2.5-6 metre

High to very high: Wind speed 63-117 kmph (34-63 knots) & Wave height 6-14 metre

Phenomenal: Wind speed > 117 kmph (> 63 knots) & Wave height > 14 metre

Cyclone

Cyclonic Storm: Wind speed 62-87 kmph (34-47 knots)

Severe Cyclonic Storm: Wind speed 88-117 kmph (48-63 knots)

Very Severe Cyclonic Storm: Wind speed 118-165 kmph (64 - 89 knots)

Extremely Severe Cyclonic Storm: Wind speed 166-220 kmph (90 -119 knots)

Super Cyclone Storm: Wind speed > 220 kmph (> 119 knots)

* Red colour warning does not mean "Red Alert", Red colour warning means "Take Action".

Forecast and Warning for any day is valid from 0830 hours IST of day till 0830 hours IST of next day.

For more details, kindly visit <https://mausam.imd.gov.in> or contact: 011-2434-4599

(Service to the Nation since 1875)

Hot and Humid: When maximum temperatures remain 3°C above normal along with the above normal relative humidity.