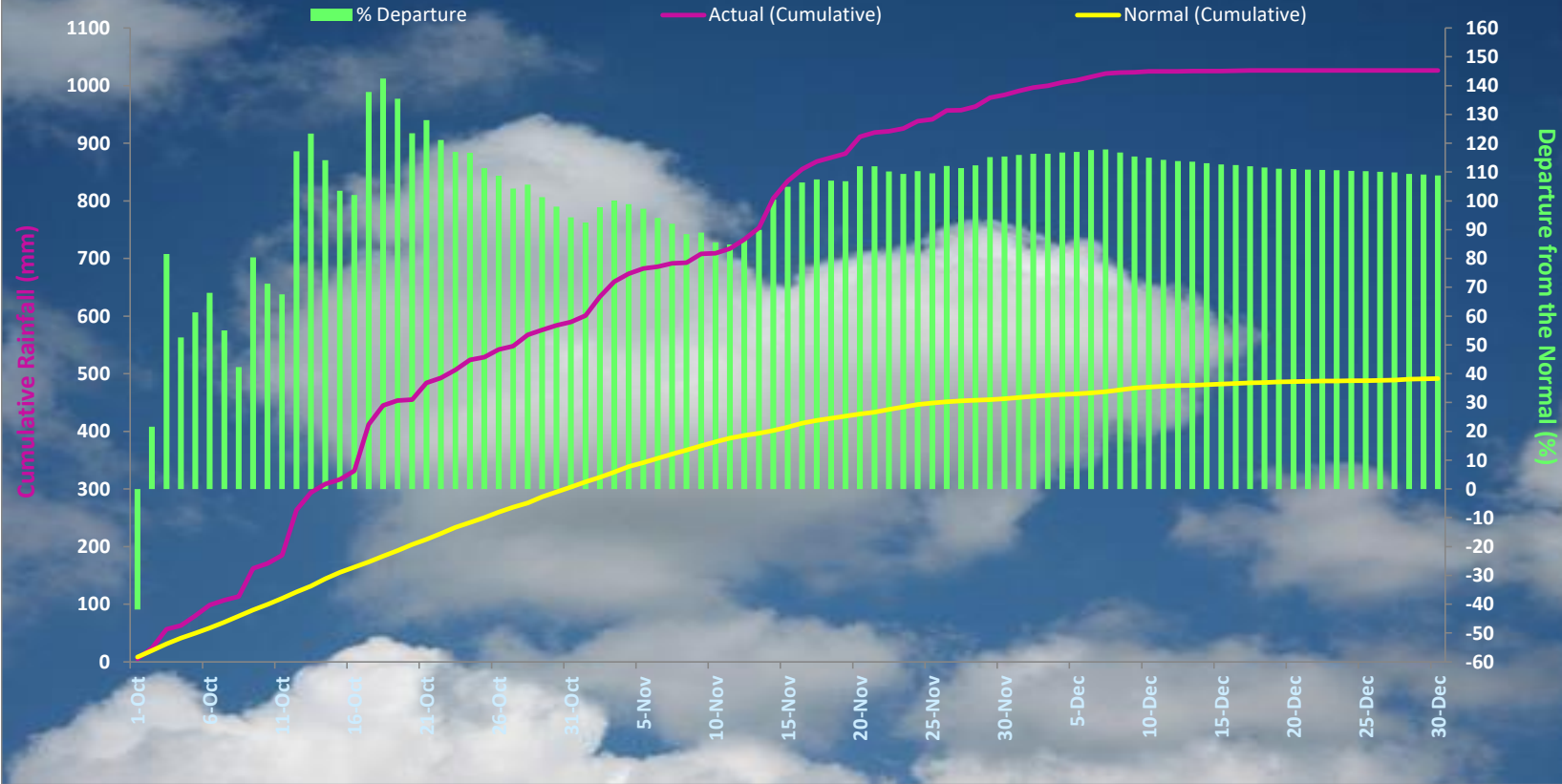


PERFORMANCE OF NORTH EAST MONSOON 2021 OVER KERALA

From 01-Oct-2021 to 31-Dec-2021

CUMULATIVE RAINFALL FOR KERALA - NE MONSOON 2021



ACTUAL= 1026.31 mm

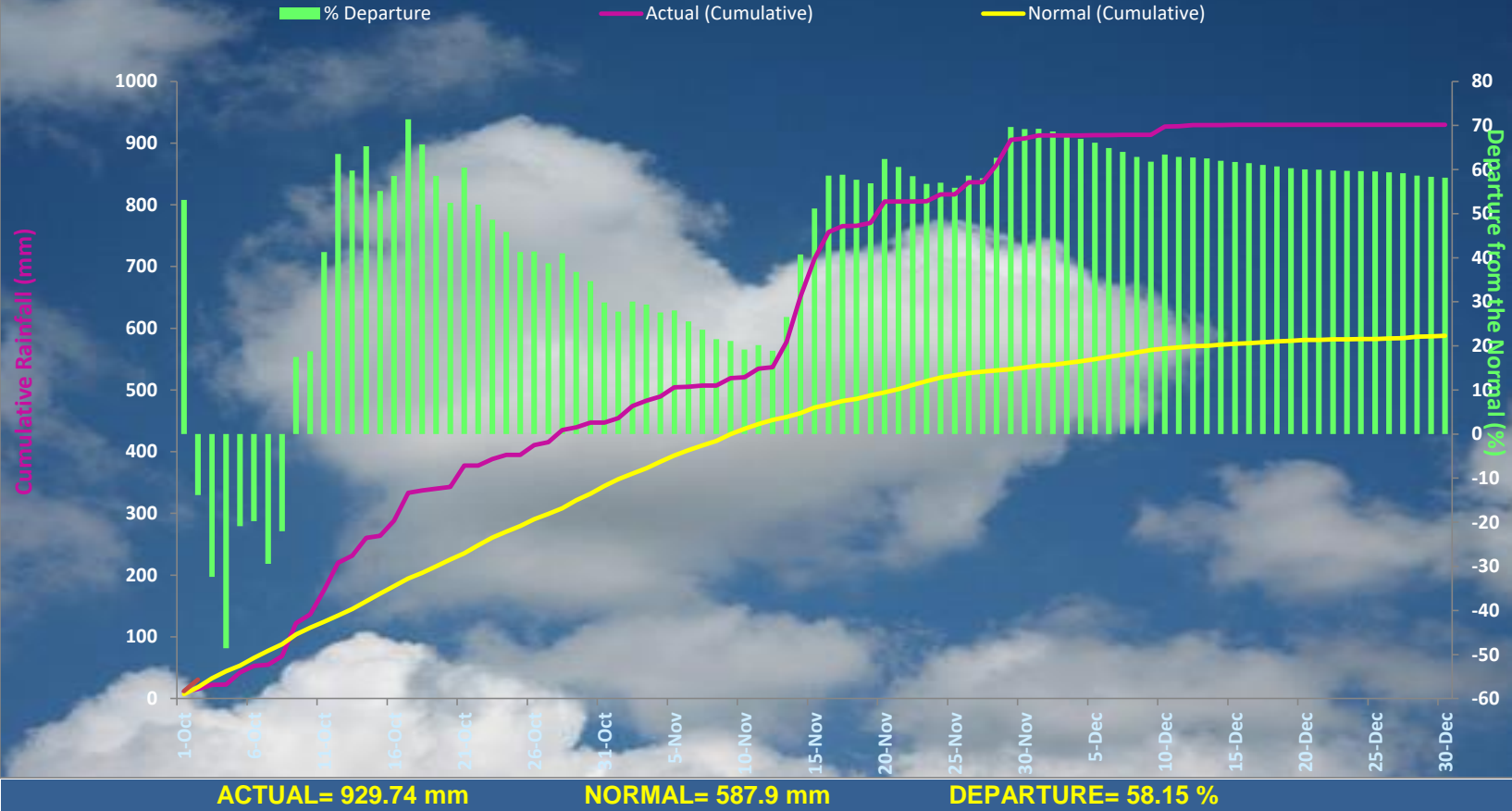
NORMAL= 491.6 mm

DEPARTURE= 108.77 %

PERFORMANCE OF NORTH EAST MONSOON 2021 OVER ALAPPUZHA

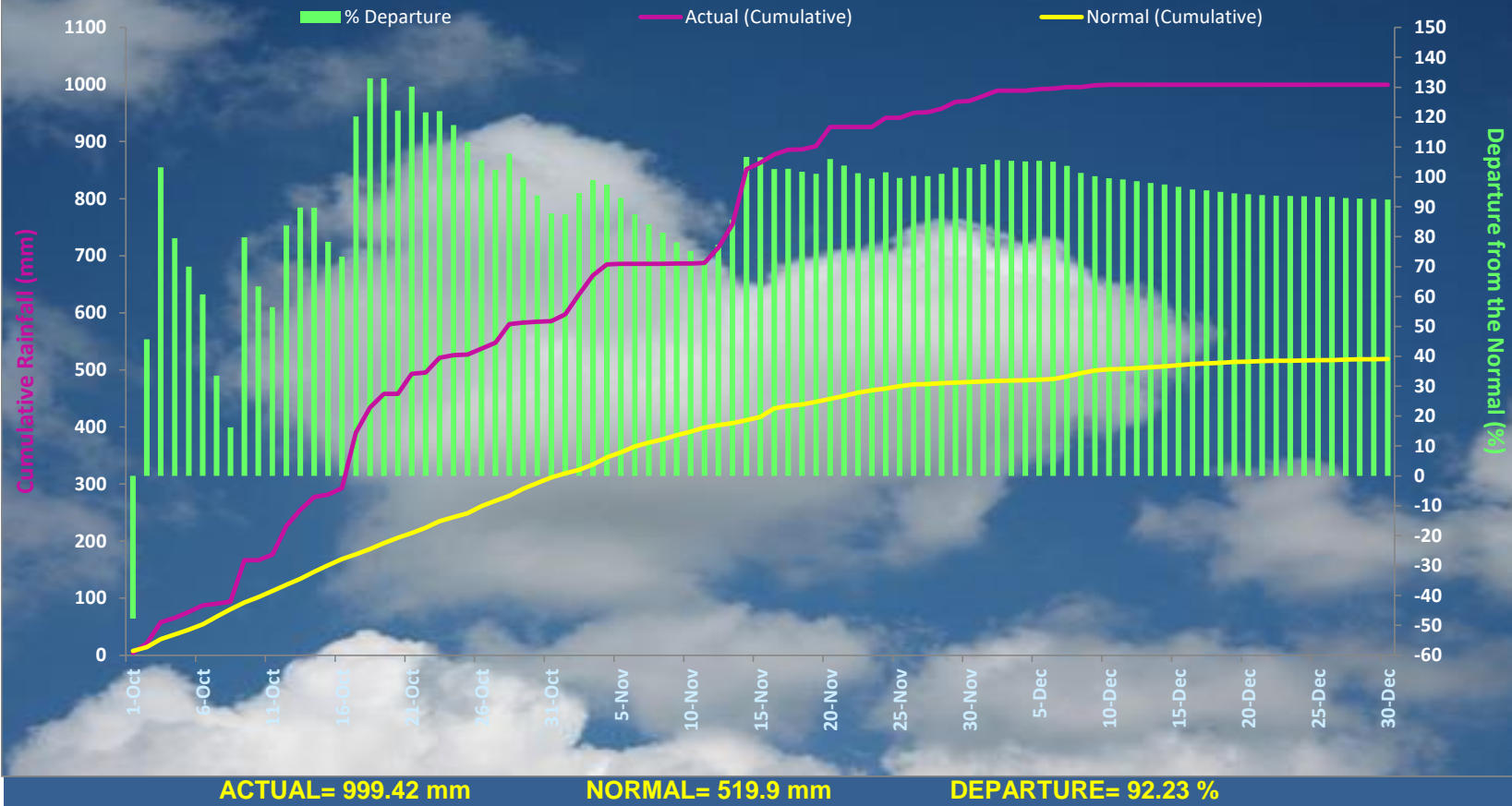
From 01-Oct-2021 to 31-Dec-2021

CUMULATIVE RAINFALL FOR ALAPPUZHA - NE MONSOON 2021



PERFORMANCE OF NORTH EAST MONSOON 2021 OVER ERNAKULAM From 01-Oct-2021 to 31-Dec-2021

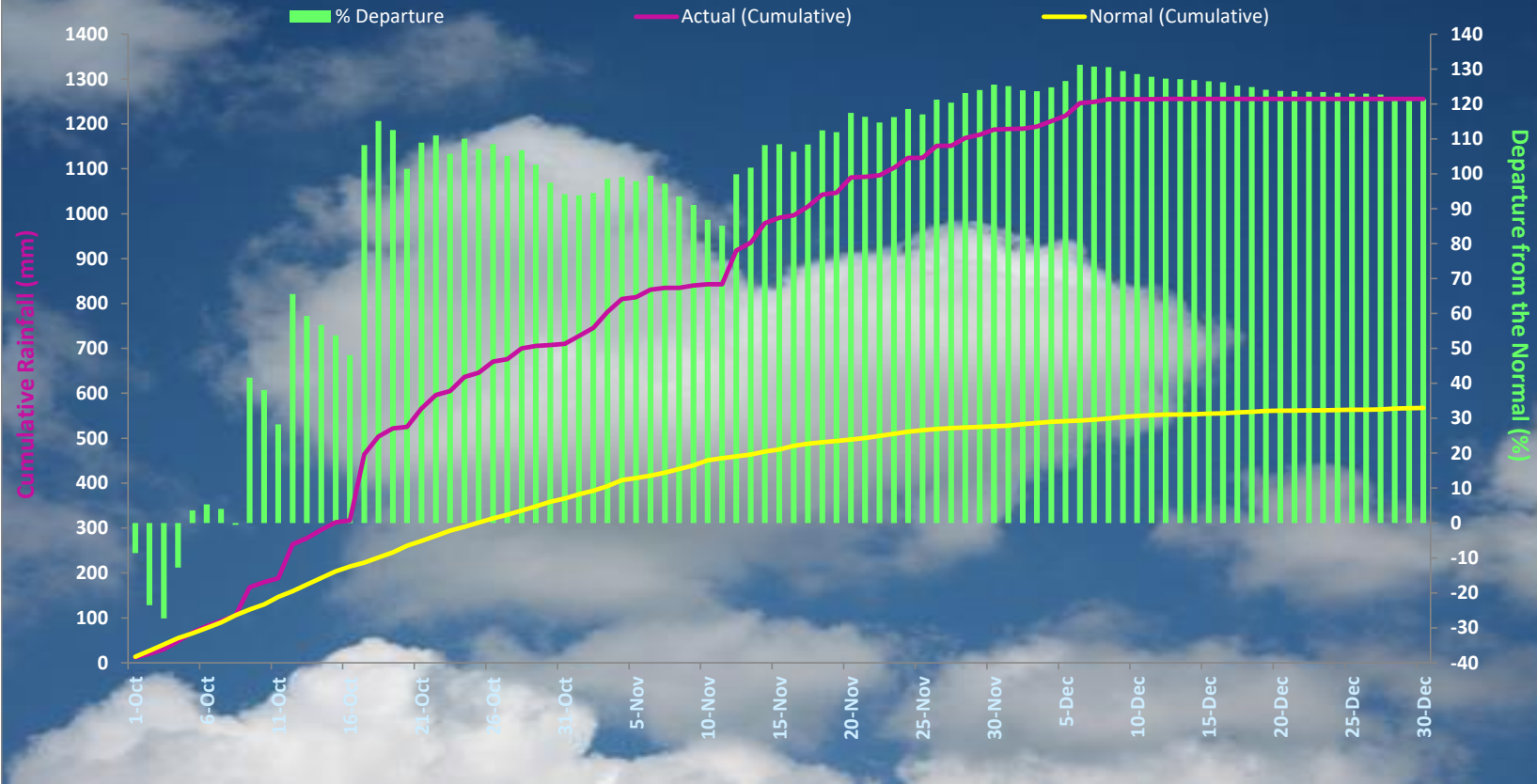
CUMULATIVE RAINFALL FOR ERNAKULAM- NE MONSOON 2021



PERFORMANCE OF NORTH EAST MONSOON 2021 OVER IDUKKI

From 01-Oct-2021 to 31-Dec-2021

CUMULATIVE RAINFALL FOR IDUKKI- NE MONSOON 2021



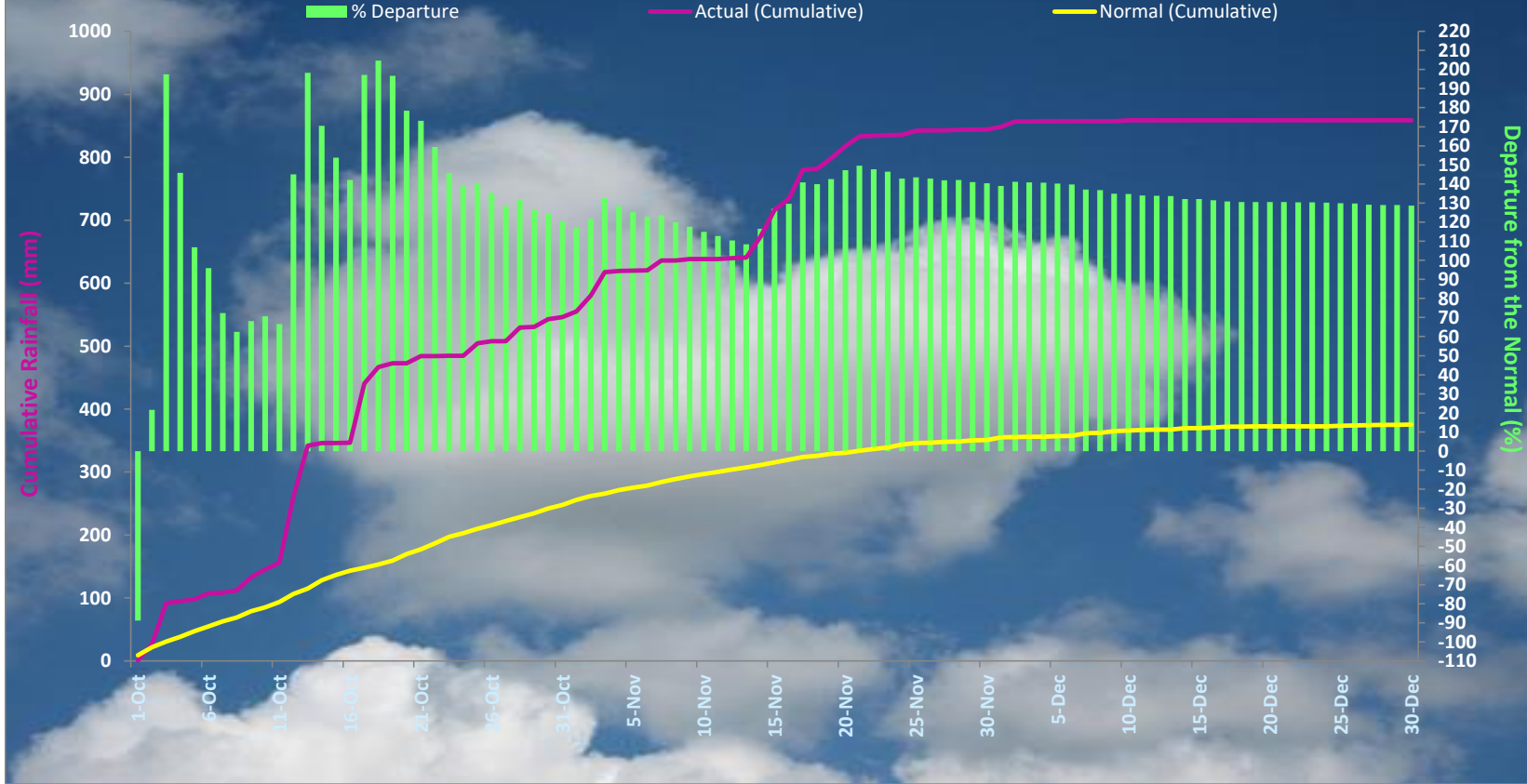
ACTUAL= 1256 mm

NORMAL= 567.7 mm

DEPARTURE= 121.24 %

PERFORMANCE OF NORTH EAST MONSOON 2021 OVER KANNUR
From 01-Oct-2021 to 31-Dec-2021

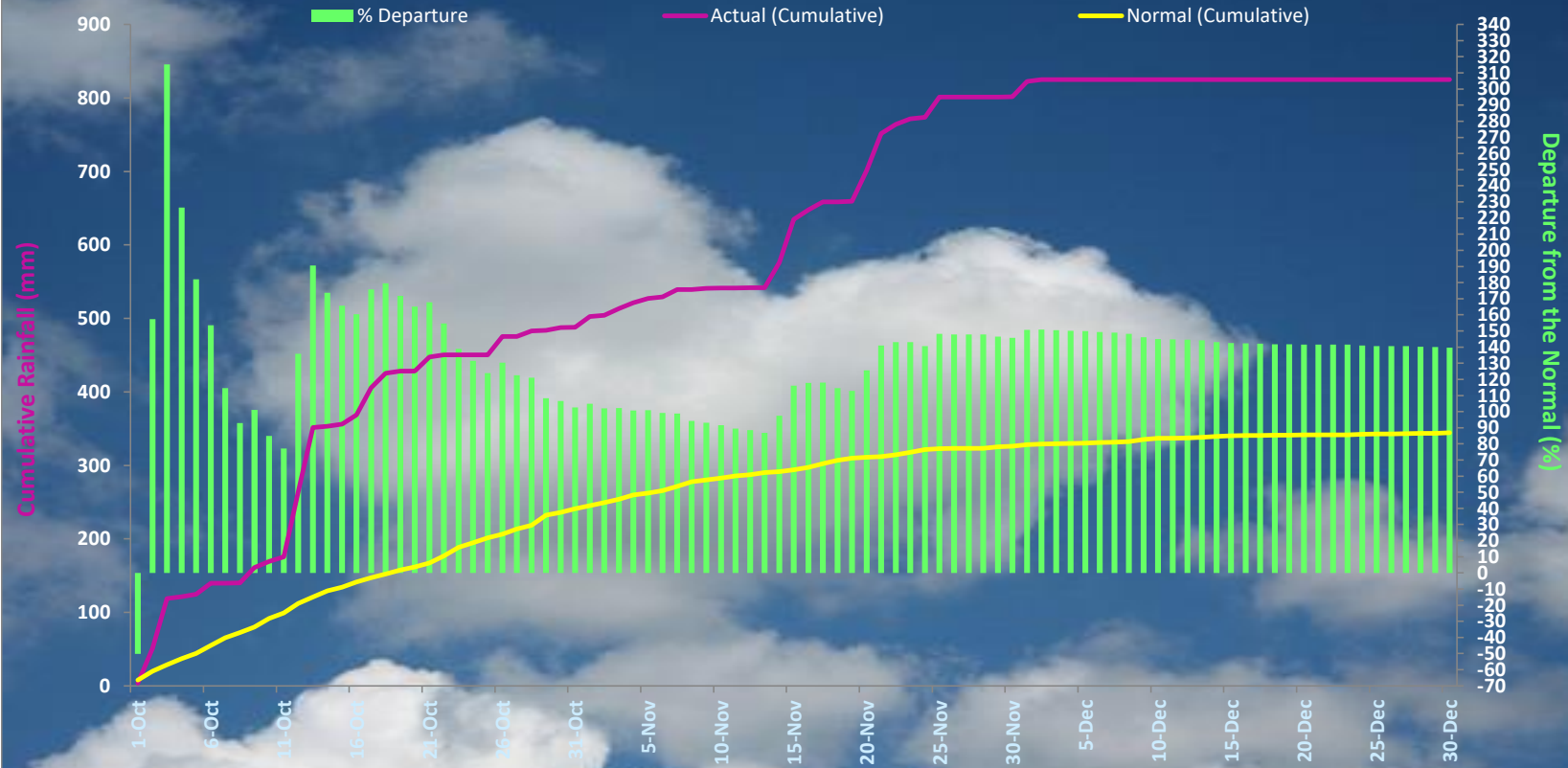
CUMULATIVE RAINFALL FOR KANNUR- NE MONSOON 2021



ACTUAL= 858.54 mm NORMAL= 375.6 mm DEPARTURE= 128.58 %

PERFORMANCE OF NORTH EAST MONSOON 2021 OVER KASARAGOD From 01-Oct-2021 to 31-Dec-2021

CUMULATIVE RAINFALL FOR KASARAGOD- NE MONSOON 2021



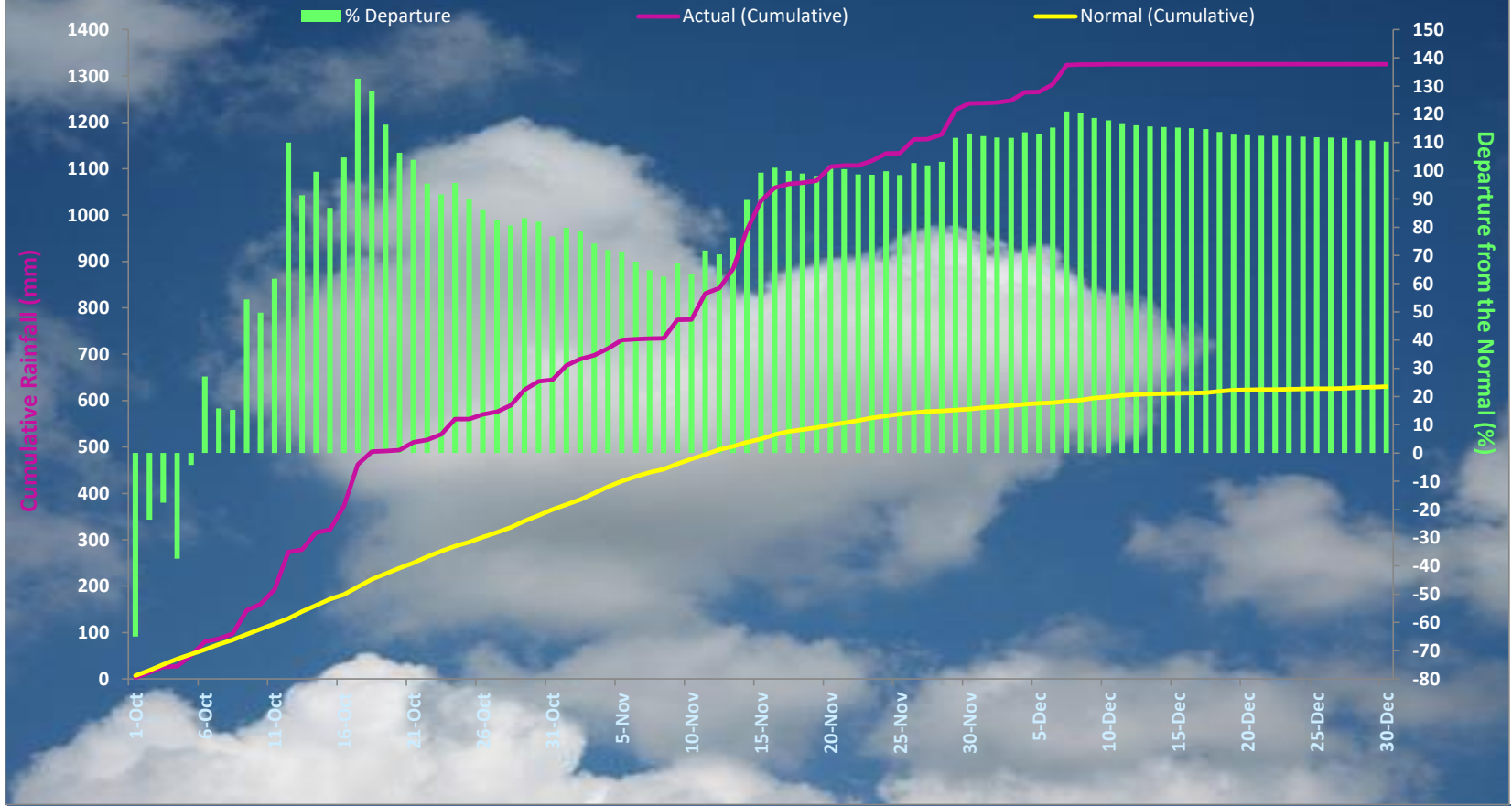
ACTUAL= 825.12 mm

NORMAL= 344.4 mm

DEPARTURE= 139.58 %

PERFORMANCE OF NORTH EAST MONSOON 2021 OVER KOLLAM
From 01-Oct-2021 to 31-Dec-2021

CUMULATIVE RAINFALL FOR KOLLAM- NE MONSOON 2021



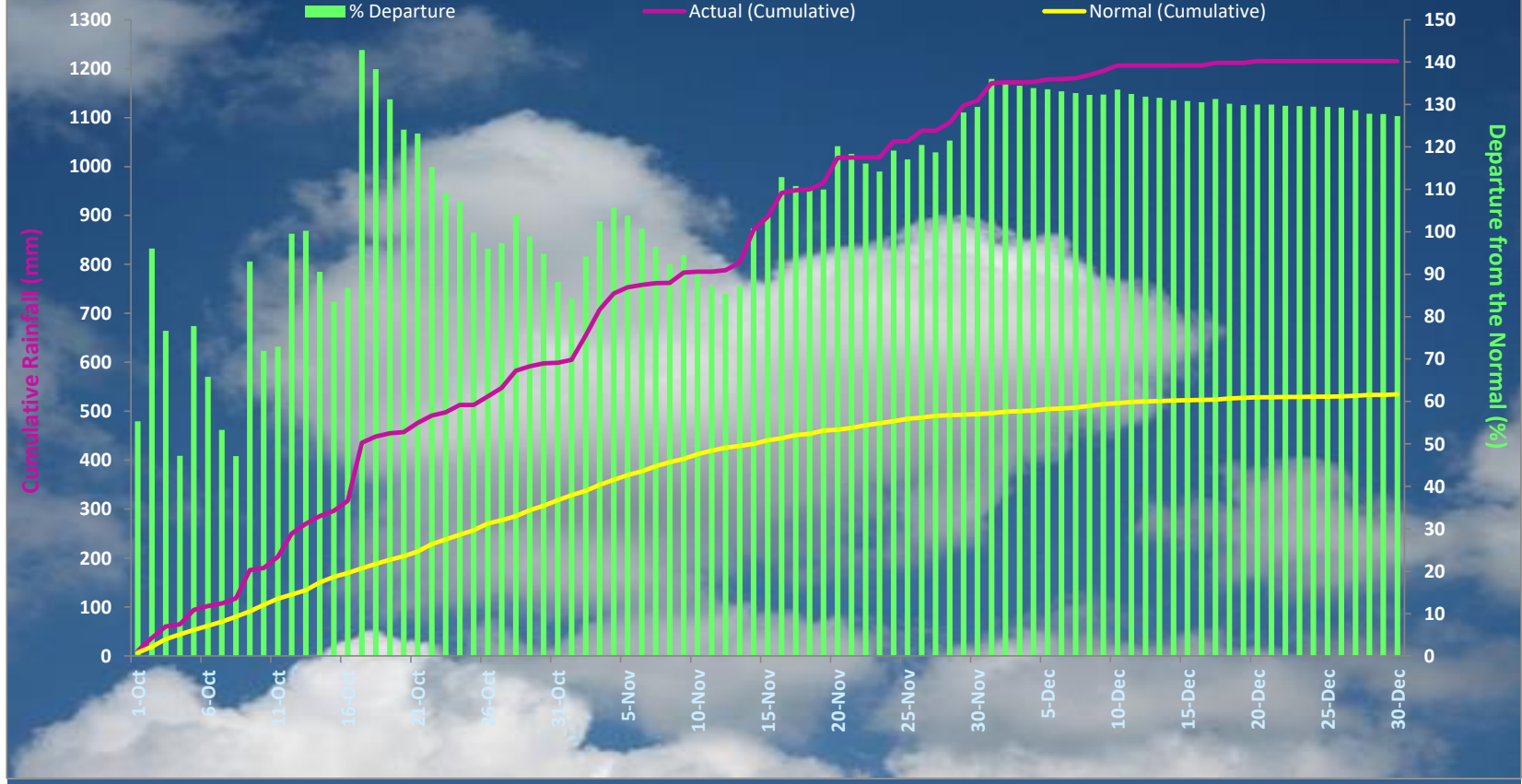
ACTUAL= 1325.14 mm

NORMAL= 630.8 mm

DEPARTURE= 110.07 %

PERFORMANCE OF NORTH EAST MONSOON 2021 OVER KOTTAYAM
From 01-Oct-2021 to 31-Dec-2021

CUMULATIVE RAINFALL FOR KOTTAYAM- NE MONSOON 2021



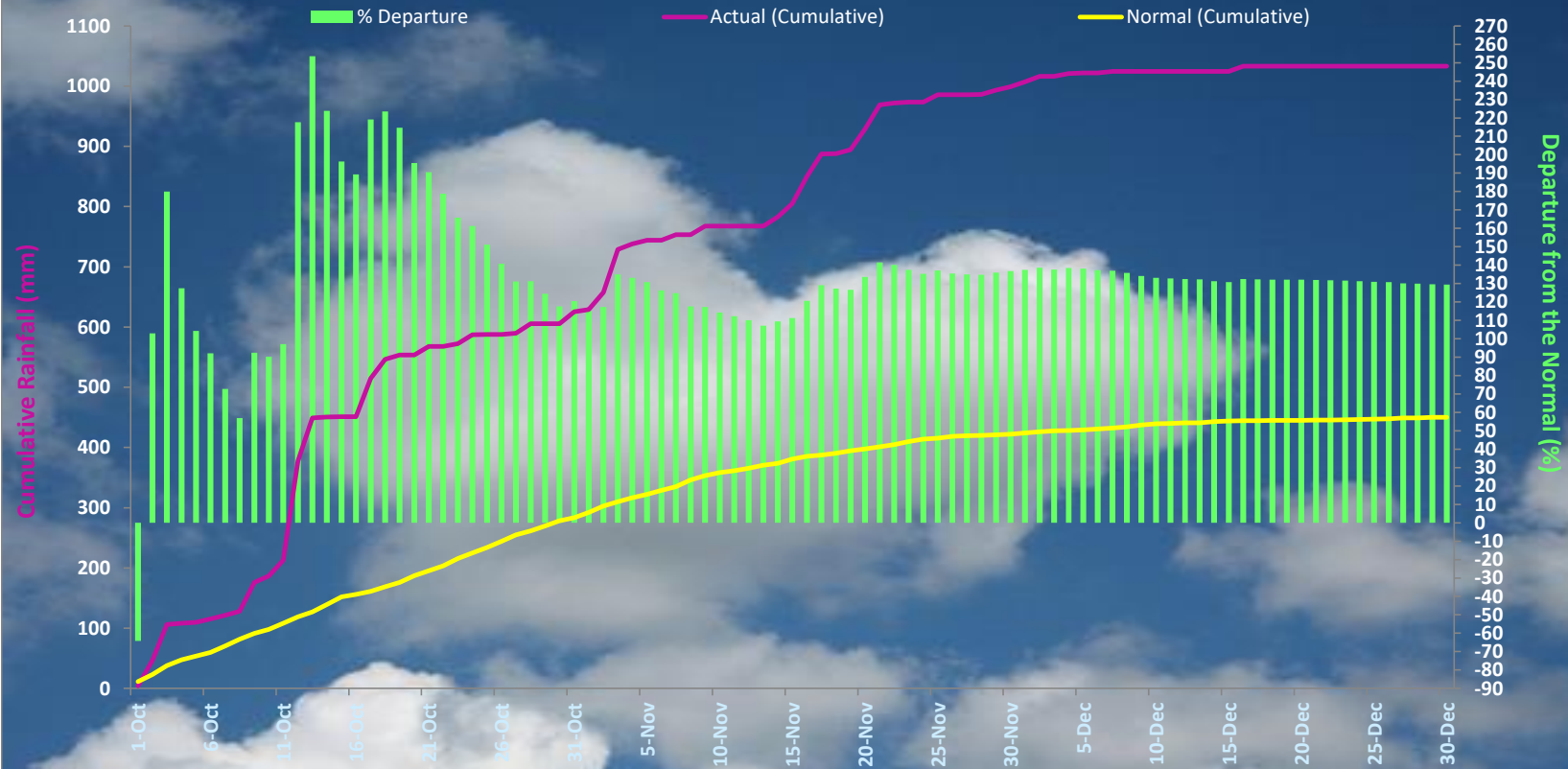
ACTUAL= 1215.51 mm

NORMAL= 535.1 mm

DEPARTURE= 127.16 %

PERFORMANCE OF NORTH EAST MONSOON 2021 OVER KOZHIKODE From 01-Oct-2021 to 31-Dec-2021

CUMULATIVE RAINFALL FOR KOZHIKODE- NE MONSOON 2021



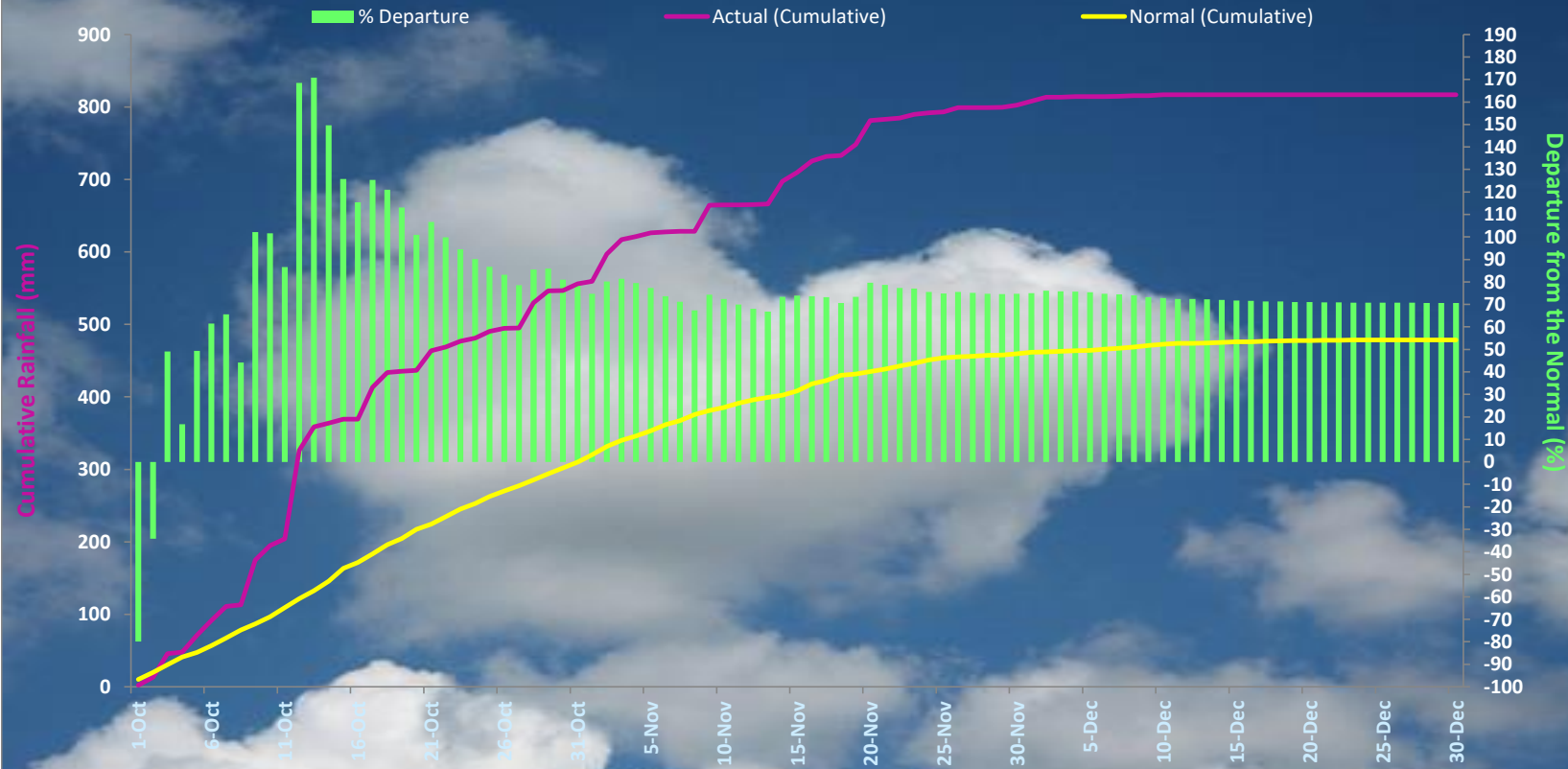
ACTUAL= 1032.88 mm

NORMAL= 450.1 mm

DEPARTURE= 229.48 %

PERFORMANCE OF NORTH EAST MONSOON 2021 OVER MALAPPURAM From 01-Oct-2021 to 31-Dec-2021

CUMULATIVE RAINFALL FOR MALAPPURAM- NE MONSOON 2021



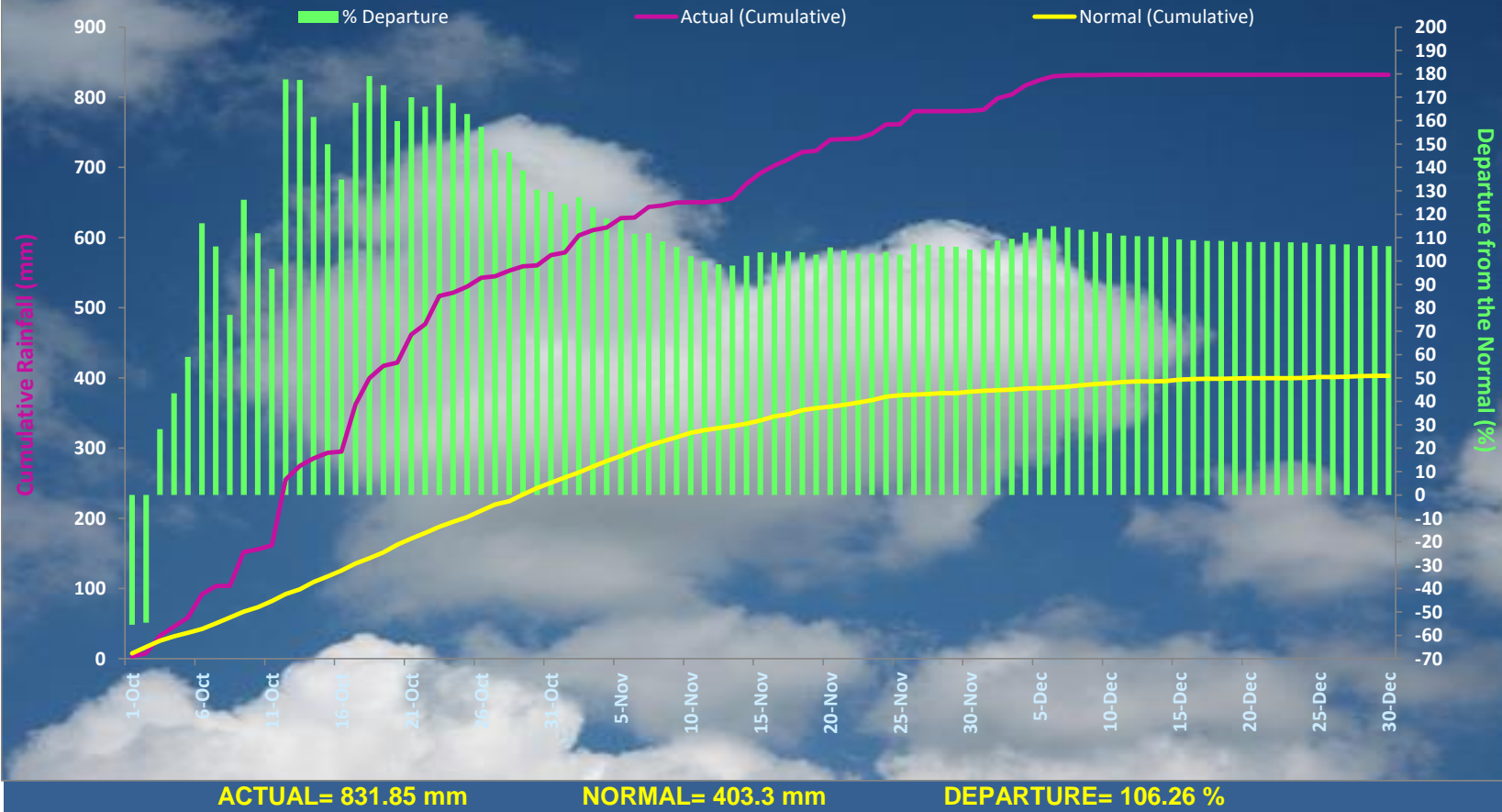
ACTUAL= 817.02 mm

NORMAL= 478.9 mm

DEPARTURE= 70.6 %

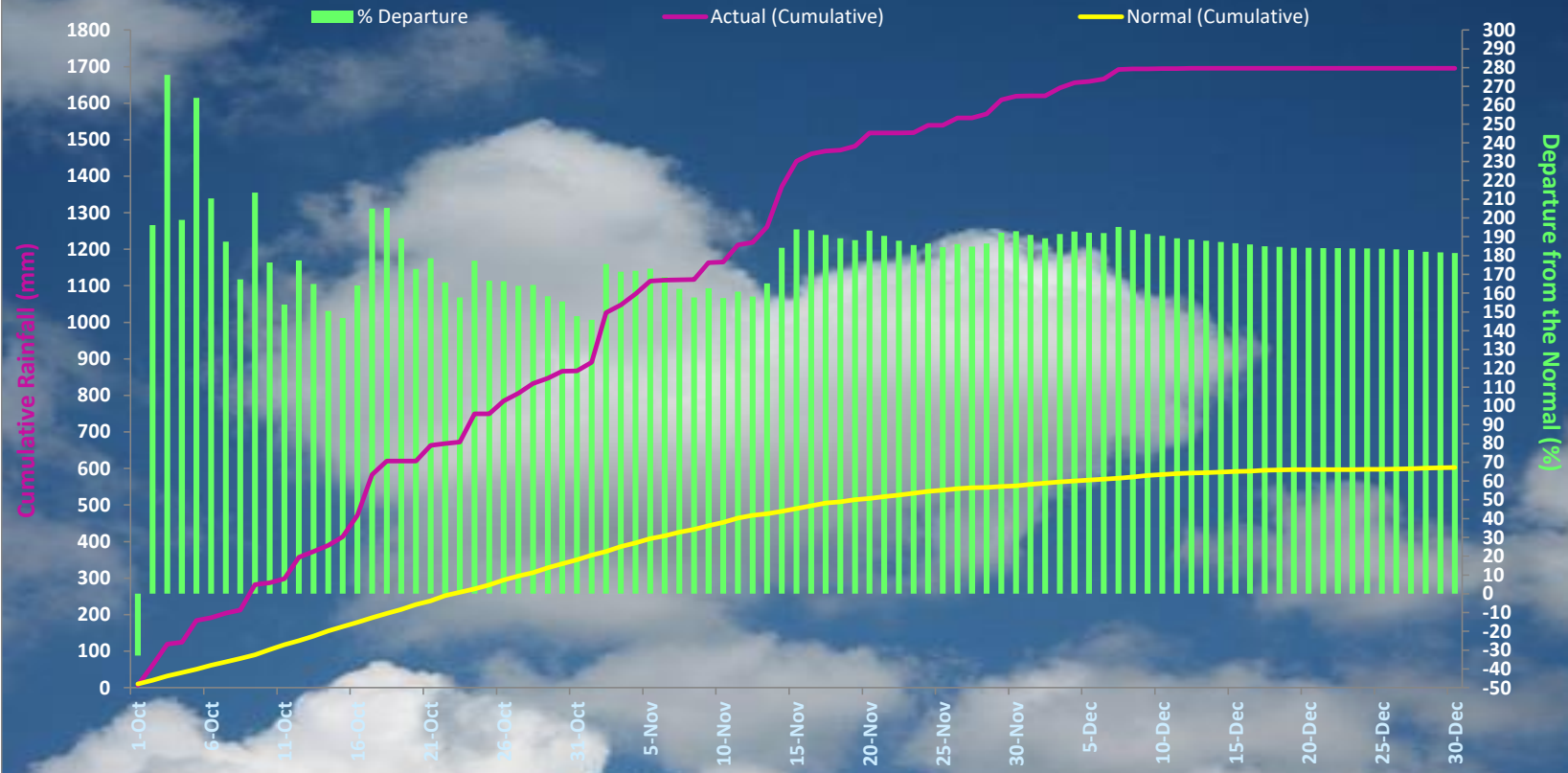
PERFORMANCE OF NORTH EAST MONSOON 2021 OVER PALAKKAD From 01-Oct-2021 to 31-Dec-2021

CUMULATIVE RAINFALL FOR PALAKKAD- NE MONSOON 2021



PERFORMANCE OF NORTH EAST MONSOON 2021 OVER PATHANAMTHITTA From 01-Oct-2021 to 31-Dec-2021

CUMULATIVE RAINFALL FOR PATHANAMTHITTA- NE MONSOON 2021



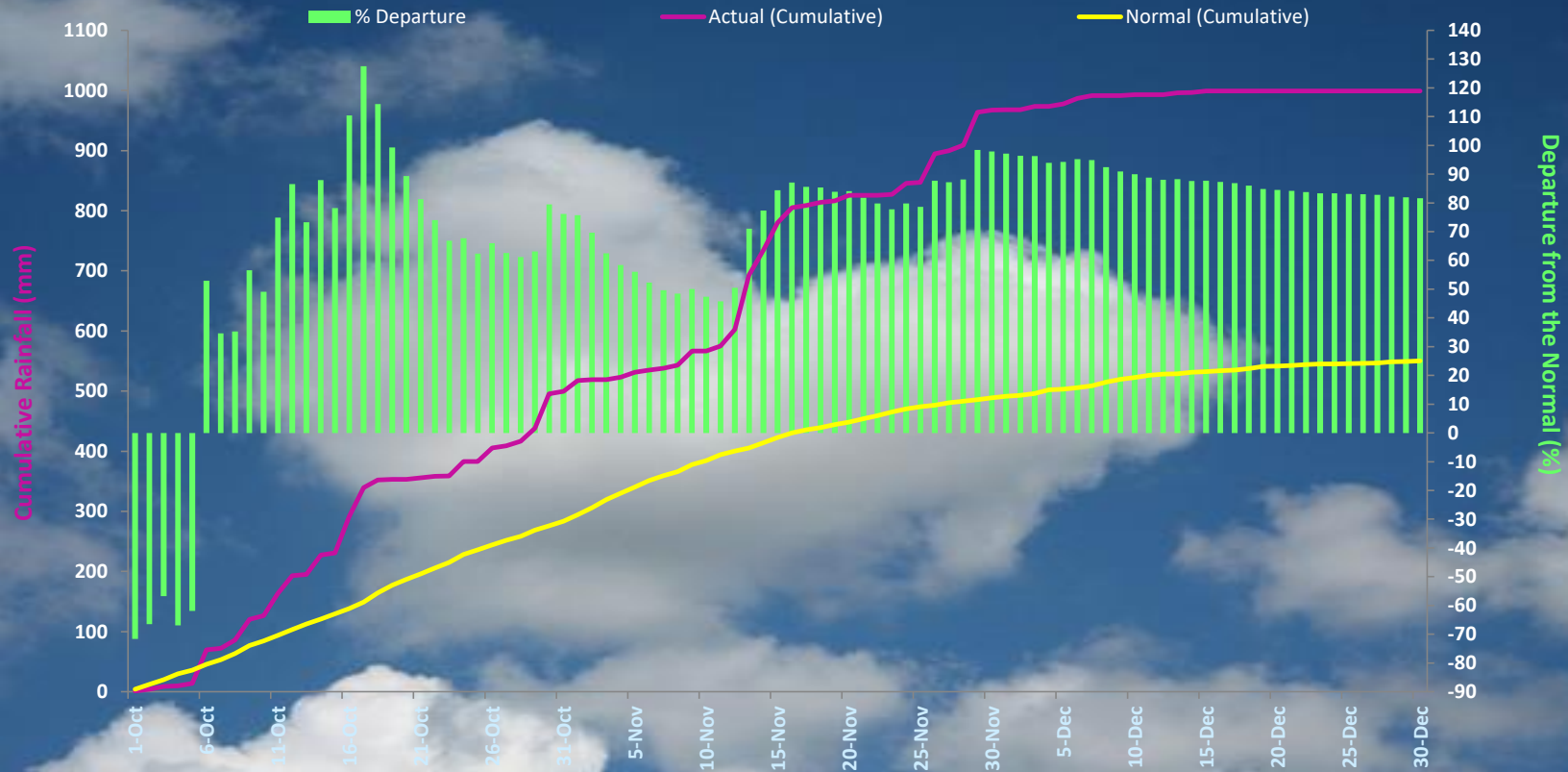
ACTUAL= 1695.43 mm

NORMAL= 603.2 mm

DEPARTURE= 181.07 %

PERFORMANCE OF NORTH EAST MONSOON 2021 OVER THIRUVANANTHAPURAM From 01-Oct-2021 to 31-Dec-2021

CUMULATIVE RAINFALL FOR THIRUVANANTHAPURAM- NE MONSOON 2021



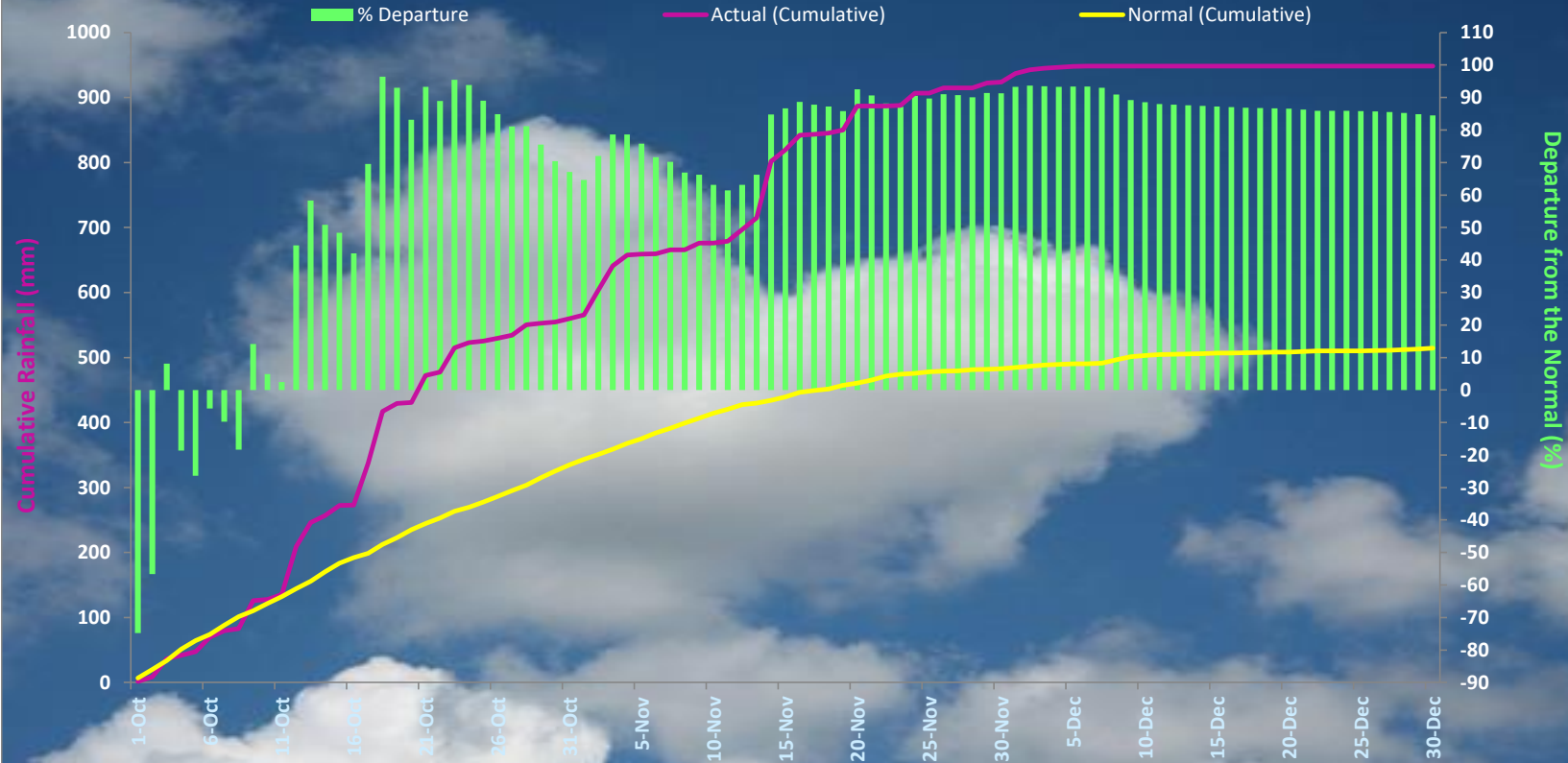
ACTUAL= 999.36 mm

NORMAL= 550.8 mm

DEPARTURE= 81.44 %

PERFORMANCE OF NORTH EAST MONSOON 2021 OVER THRISSUR From 01-Oct-2021 to 31-Dec-2021

CUMULATIVE RAINFALL FOR THRISSUR- NE MONSOON 2021



ACTUAL= 948.48 mm

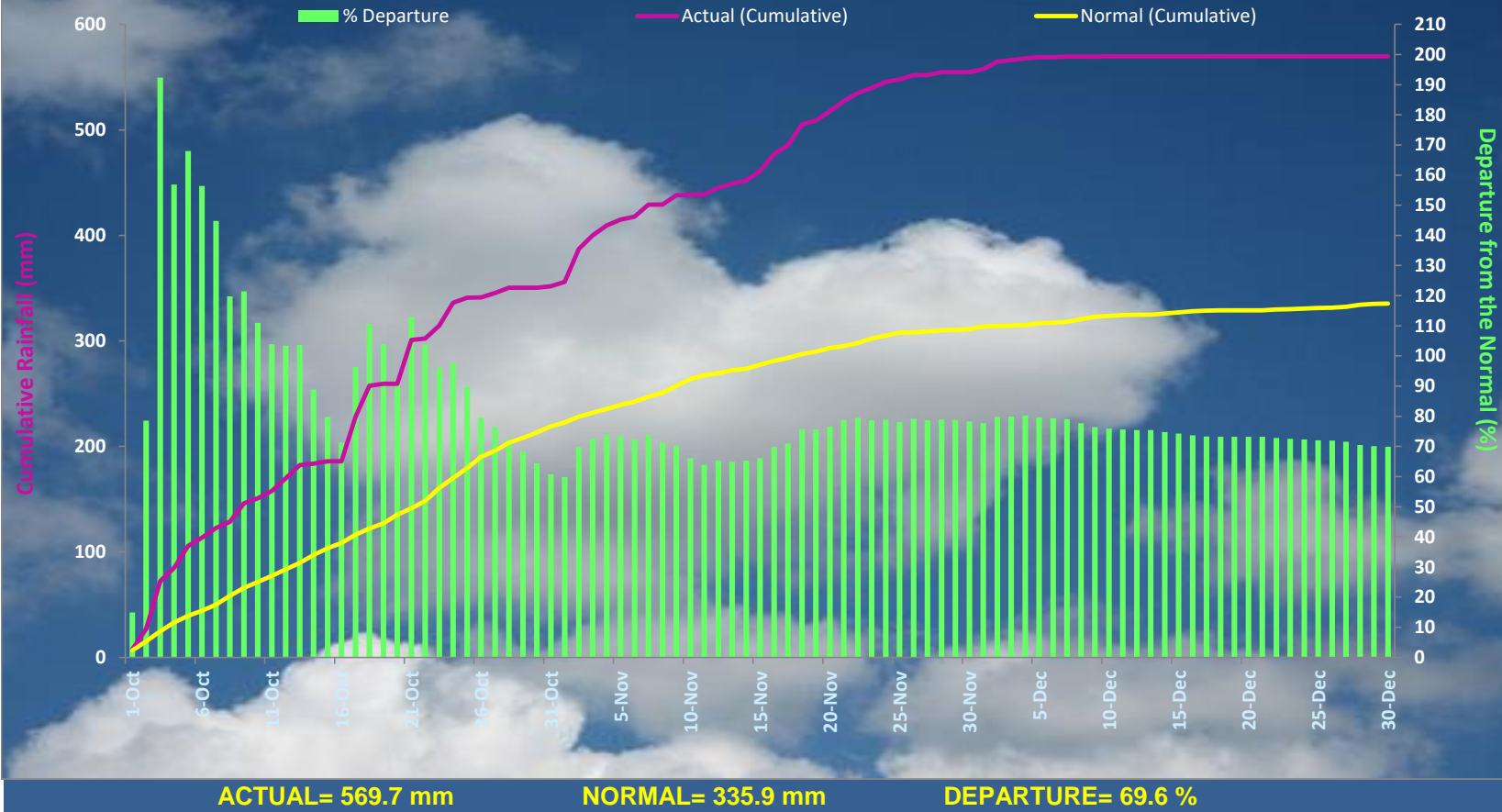
NORMAL= 514.3 mm

DEPARTURE= 84.42 %

PERFORMANCE OF NORTH EAST MONSOON 2021 OVER WAYANAD

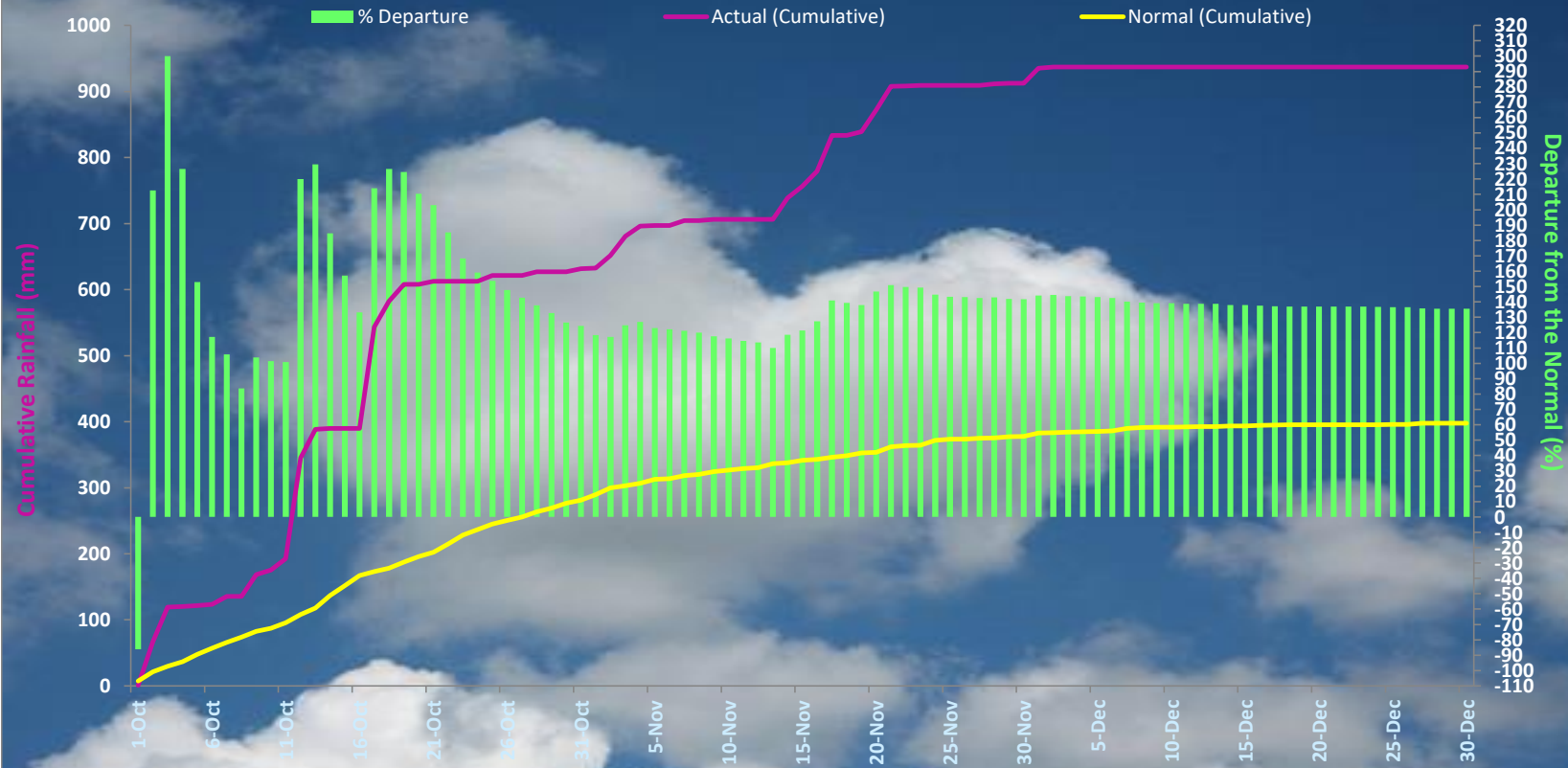
From 01-Oct-2021 to 31-Dec-2021

CUMULATIVE RAINFALL FOR WAYANAD- NE MONSOON 2021



PERFORMANCE OF NORTH EAST MONSOON 2021 OVER MAHE From 01-Oct-2021 to 31-Dec-2021

CUMULATIVE RAINFALL FOR MAHE- NE MONSOON 2021



ACTUAL= 936.78 mm

NORMAL= 397.8 mm

DEPARTURE= 135.49 %

PERFORMANCE OF NORTH EAST MONSOON 2021 OVER LAKSHADWEEP
From 01-Oct-2021 to 31-Dec-2021

