

भारत सरकार
भारत मौसम विज्ञान विभाग
(पृथ्वी विज्ञान मंत्रालय)
मौसम केन्द्र
विकास भवन पी ओ
तिरुवनंतपुरम - 695 033



GOVERNMENT OF INDIA
INDIA METEOROLOGICAL
DEPARTMENT
(Ministry of Earth Sciences)
METEOROLOGICAL CENTRE
VikasBhavan P.O
Thiruvananthapuram - 695033

Date: 26/05/2025

Time: 1100 HRS IST

**IMPACT BASED FORECAST FOR HEAVY RAINFALL OVER KOLLAM DISTRICT - WARNING
NO. 4**

Update of Ongoing Rainfall Event

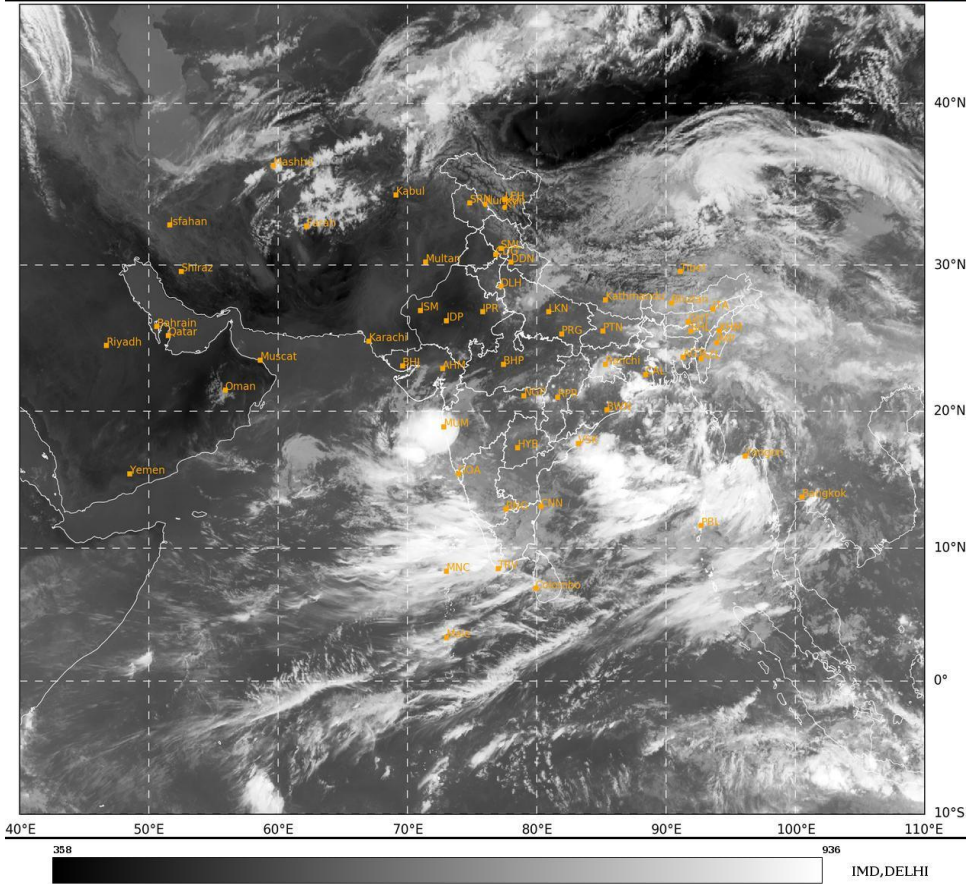
Realized Weather	Rainfall received in mm at AWS stations from 0830 hrs IST to 1030 hrs IST of Today. THENMALA : 0.0 CHAVARA : 0.0 KARUVELIL_TKMIT : 0.0 PARIPPALLY : 0.0 PUNALUR : 0.0
Forecast	<i>As per the latest Radar Imagery, Moderate to intense spell of rainfall with gusty winds speed reaching 60KMPH is expected in the district for next 3 hours</i>
Impact Expected	<ul style="list-style-type: none">• Visibility may become poor leading to traffic congestion.• Water logging / flooding in many parts of low lying area and river banks.• Uprooting of trees may cause damages to power sector.• Partial damages to kutcha houses and huts.• Water logging on major roads leading to traffic congestions.• Chances of landslide/landslip/mudslip.• Rain could cause adverse impact on Human & Livestock as well as damage to Loose & unsecured structures along the coast line.• Lightning may injure people and cattle at open places.
Action Suggested	<ul style="list-style-type: none">• Traffic may be regulated effectively• People in the affected area may restrict their movement.• Take shelter during thunderstorm/lightning activities.
COLOR CODES	
Very Low	No action
Low	Be updated
Medium	Be prepared
High	Take Action

DUTY OFFICER
Meteorological Centre,
Thiruvananthapuram

Latest Satellite Picture

SAT : INSAT-3DR IMG
IMG_TIR2 12.0 um
LIC Mercator

26-05-2025/(0445 to 0512) GMT
26-05-2025/(1015 to 1042) IST



Legends:

Rainfall Intensity			
Terminology	Rainfall Range	Terminology	Rainfall Range
Light Spell	1 cm /hr	Very Intense Spell	3-5 cm/hr
Moderate Spell	1-2 cm/hr	Extremely Intense Spell	5-10 cm/hr
Intense Spell	2-3 cm/hr	Cloud Burst	>10 cm/hr

Rainfall Categories			
Terminology	Rainfall (in mm)	Terminology	Rainfall (in mm)
Very Light Rainfall	Trace- 2.4	Heavy Rainfall	64.5-115.5
Light Rainfall	2.5-15.5	Very Heavy Rainfall	115.6-204.4
Moderate Rainfall	15.6-64.4	Extremely Heavy Rainfall	>=204.5