

भारत सरकार  
भारत मौसम विज्ञान विभाग  
(पृथ्वी विज्ञान मंत्रालय)  
मौसम केन्द्र  
विकास भवन पी ओ  
तिरुवनंतपुरम - 695 033



GOVERNMENT OF INDIA  
INDIA METEOROLOGICAL  
DEPARTMENT  
(Ministry of Earth Sciences)  
METEOROLOGICAL CENTRE  
VikasBhavan P.O  
Thiruvananthapuram - 695033

Date: 16/10/2021

Time: 2330 HRS IST

IMPACT BASED FORECAST FOR HEAVY RAINFALL OVER KASARAGOD DISTRICT -  
WARNING NO. 2

Update of Ongoing Rainfall Event

<b>Realized Weather</b>	Rainfall received in mm at AWS stations from 0830 hrs to 2300 hrs IST of Today. KUDLU_AFMU : 4.5 PILICODE : 53.0
<b>Forecast</b>	<b><i>As per the latest Radar Imagery, Thunderstorm accompanied with moderate to heavy spell of rainfall with winds gusting to 40 KMPH is expected in the district for next 3 hours</i></b>
<b>Impact Expected</b>	<ul style="list-style-type: none"><li>• Visibility may become poor leading to traffic congestion.</li><li>• Water logging / flooding in many parts of low lying area and river banks.</li><li>• Uprooting of trees may cause damages to power sector.</li><li>• Partial damages to kutchha houses and huts.</li><li>• Water logging on major roads leading to traffic congestions.</li><li>• Chances of Landslide and landslip.</li><li>• Inundation of low lying areas</li><li>• Rain could cause adverse impact on Human &amp; Livestock as well as damage to Loose &amp; unsecured structures along the coast line</li></ul>
<b>Action Suggested</b>	<ul style="list-style-type: none"><li>• Traffic may be regulated effectively</li><li>• People in the affected area may restrict their movement.</li></ul>

COLOR CODES

Very Low	No action
Low	Be updated
Medium	Be prepared
High	Take Action

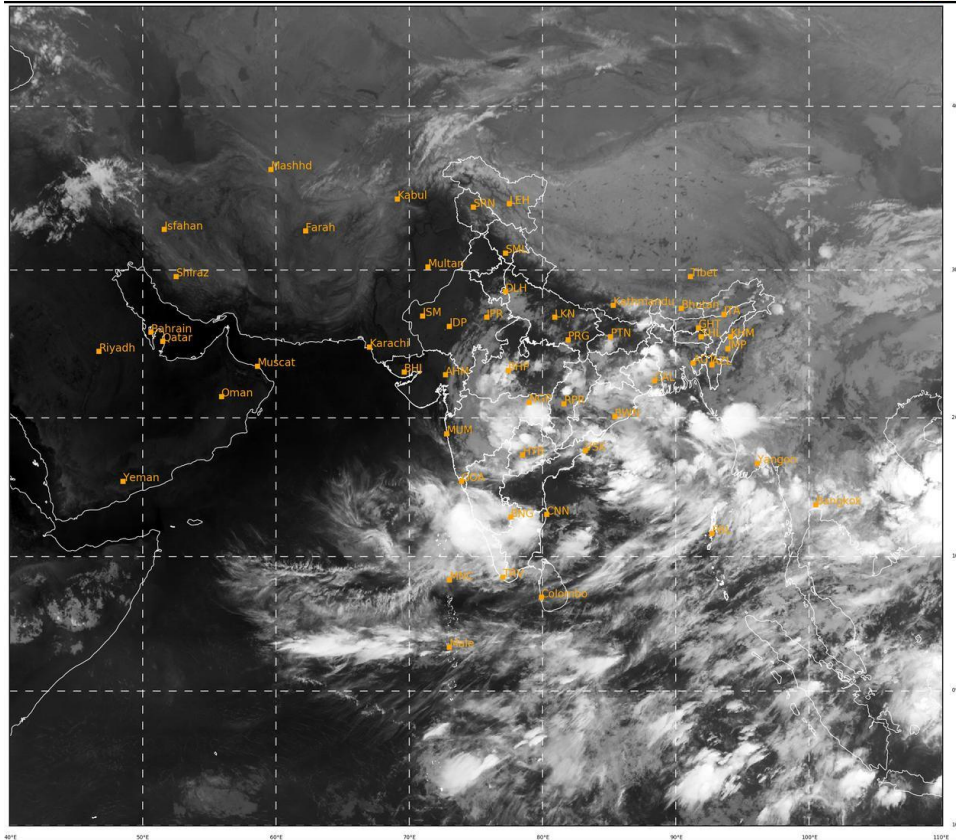
DUTY OFFICER  
Meteorological Centre,  
Thiruvananthapuram

वेब: [www.imdtvm.gov.in](http://www.imdtvm.gov.in) ईमेल: [mc.trv@imd.gov.in](mailto:mc.trv@imd.gov.in) फोन: 2322894 / 2322330 / 2330025/2322471, फैक्स: 2332330

# Latest Satellite Picture

SAT : INSAT-3DR IMG  
IMG\_TIR2 12.0 um  
L1C Mercator

16-10-2021/(1645 to 1712) GMT  
16-10-2021/(2215 to 2242) IST

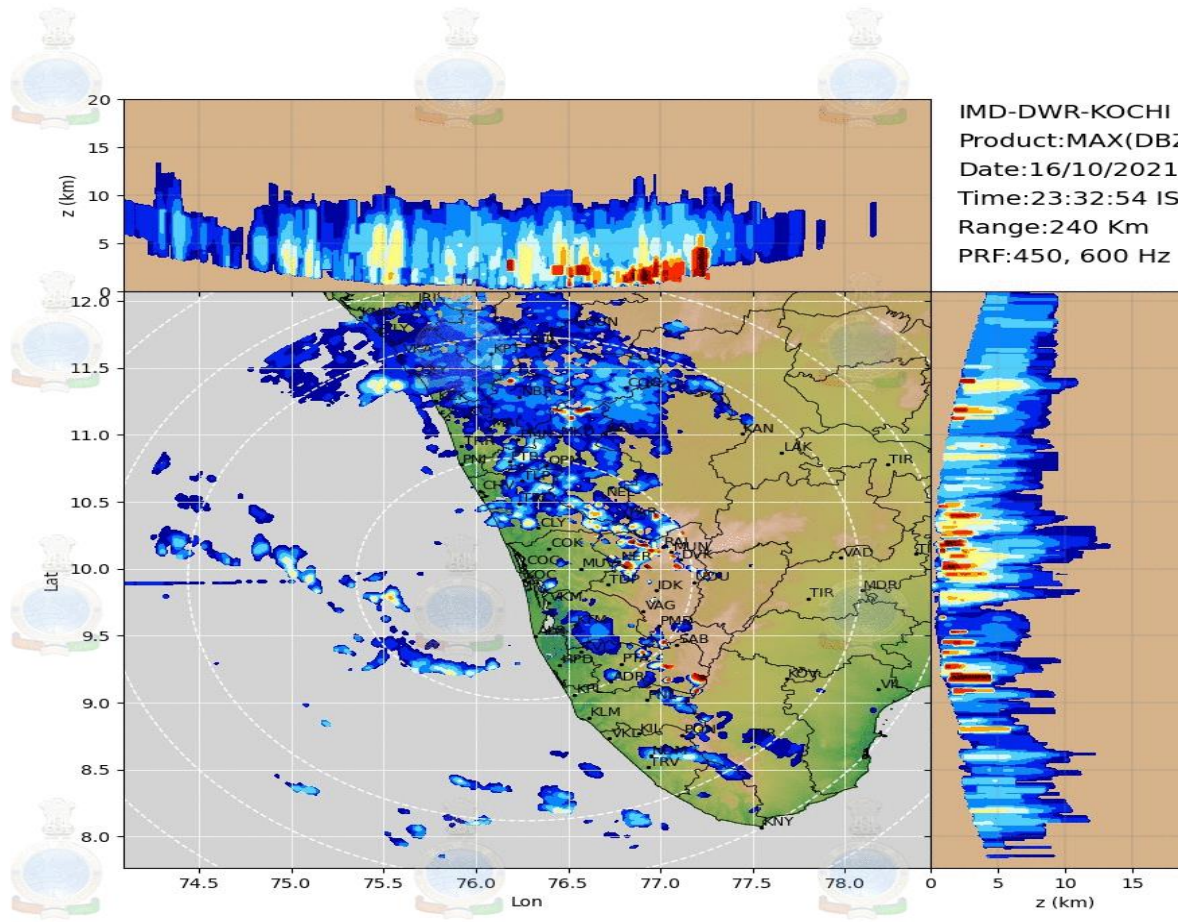


463

946

IMD, DELHI

Latest Radar KOC



**Legends:**

Rainfall Intensity			
Terminology	Rainfall Range	Terminology	Rainfall Range
Light Spell	1 cm /hr	Very Intense Spell	3-5 cm/hr
Moderate Spell	1-2 cm/hr	Extremely Intense Spell	5-10 cm/hr
Intense Spell	2-3 cm/hr	Cloud Burst	>10 cm/hr

Rainfall Categories			
Terminology	Rainfall (in mm)	Terminology	Rainfall (in mm)
Very Light Rainfall	Trace- 2.4	Heavy Rainfall	64.5-115.5
Light Rainfall	2.5-15.5	Very Heavy Rainfall	115.6-204.4
Moderate Rainfall	15.6-64.4	Extremely Heavy Rainfall	>=204.5