

भारत सरकार  
भारत मौसम विज्ञान विभाग  
(पृथ्वी विज्ञान मंत्रालय)  
मौसम केन्द्र  
विकास भवन पी ओ  
तिरुवनंतपुरम - 695 033



GOVERNMENT OF INDIA  
INDIA METEOROLOGICAL  
DEPARTMENT  
(Ministry of Earth Sciences)  
METEOROLOGICAL CENTRE  
Vikas Bhavan P.O  
Thiruvananthapuram - 695033

Date: 22/06/2025

Time: 2215 HRS IST

**IMPACT BASED FORECAST FOR HEAVY RAINFALL OVER KOTTAYAM DISTRICT -  
WARNING NO. 1**

**Update of Ongoing Rainfall Event**

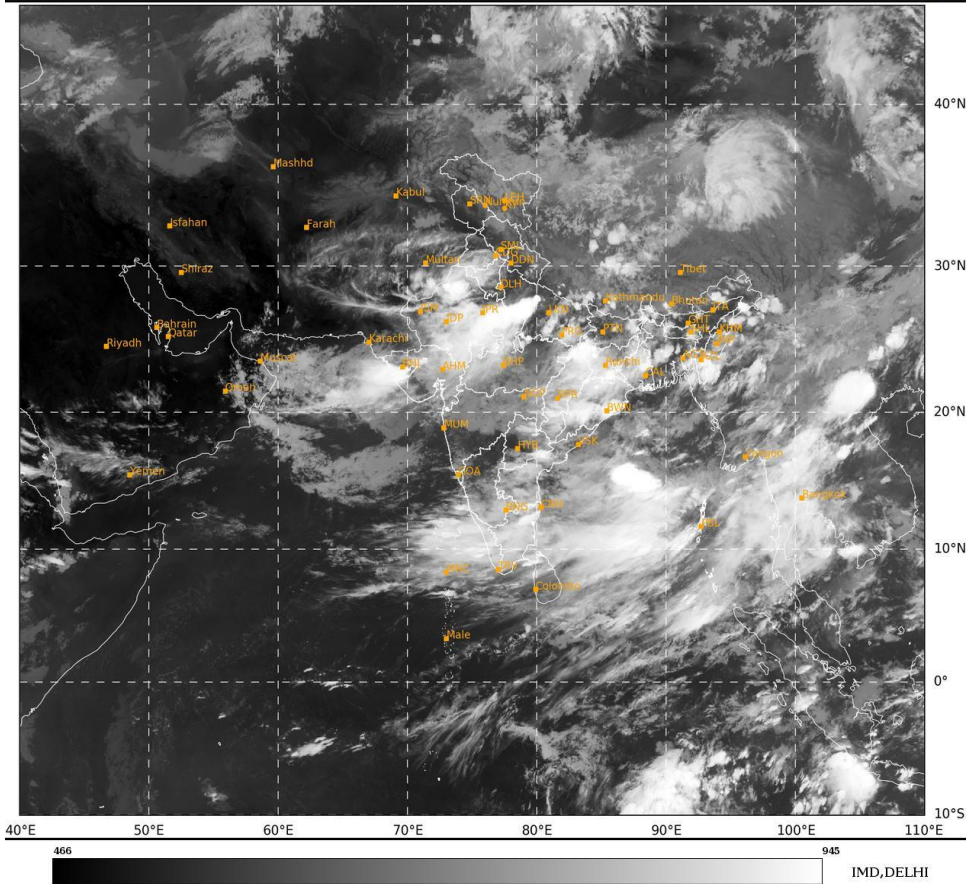
<b>Realized Weather</b>	Rainfall received in mm at AWS stations from 0830 hrs IST to 2145 hrs IST of Today. KOTTAYAM : -9.5 POONJAR AWS : -38.5 VAIKOM : -39.5
<b>Forecast</b>	<b><i>As per the latest Radar Imagery, Moderate to intense spell of rainfall with gusty winds speed reaching 50KMPH is expected in the district for next 3 hours</i></b>
<b>Impact Expected</b>	<ul style="list-style-type: none"><li>• Visibility may become poor leading to traffic congestion.</li><li>• Water logging / flooding in many parts of low lying area and river banks.</li><li>• Uprooting of trees may cause damages to power sector.</li><li>• Partial damages to kutcha houses and huts.</li><li>• Water logging on major roads leading to traffic congestions.</li><li>• Chances of landslide/landslip/mudslip.</li><li>• Rain could cause adverse impact on Human &amp; Livestock as well as damage to Loose &amp; unsecured structures along the coast line.</li><li>• Lightning may injure people and cattle at open places.</li></ul>
<b>Action Suggested</b>	<ul style="list-style-type: none"><li>• Traffic may be regulated effectively</li><li>• People in the affected area may restrict their movement.</li><li>• Take shelter during thunderstorm/lightning activities.</li></ul>
<b>COLOR CODES</b>	
<b>Very Low</b>	<b>No action</b>
<b>Low</b>	<b>Be updated</b>
<b>Medium</b>	<b>Be prepared</b>
<b>High</b>	<b>Take Action</b>

**DUTY OFFICER**  
Meteorological Centre,  
Thiruvananthapuram

Latest Satellite Picture

SAT : INSAT-3DR IMG  
IMG\_TIR2 12.0 um  
L1C Mercator

22-06-2025/(1545 to 1612) GMT  
22-06-2025/(2115 to 2142) IST



Legends:

Rainfall Intensity			
Terminology	Rainfall Range	Terminology	Rainfall Range
Light Spell	1 cm /hr	Very Intense Spell	3-5 cm/hr
Moderate Spell	1-2 cm/hr	Extremely Intense Spell	5-10 cm/hr
Intense Spell	2-3 cm/hr	Cloud Burst	>10 cm/hr

Rainfall Categories			
Terminology	Rainfall (in mm)	Terminology	Rainfall (in mm)
Very Light Rainfall	Trace- 2.4	Heavy Rainfall	64.5-115.5
Light Rainfall	2.5-15.5	Very Heavy Rainfall	115.6-204.4
Moderate Rainfall	15.6-64.4	Extremely Heavy Rainfall	>=204.5