

भारत सरकार
भारत मौसम विज्ञान विभाग
(पृथ्वी विज्ञान मंत्रालय)
मौसम केन्द्र
विकास भवन पी ओ
तिरुवनंतपुरम - 695 033



GOVERNMENT OF INDIA
INDIA METEOROLOGICAL
DEPARTMENT
(Ministry of Earth Sciences)
METEOROLOGICAL CENTRE
VikasBhavan P.O
Thiruvananthapuram - 695033

Date: 20/10/2021

Time: 1900 HRS IST

**IMPACT BASED FORECAST FOR HEAVY RAINFALL OVER THRISSUR DISTRICT - WARNING
NO. 1**

Update of Ongoing Rainfall Event

Realized Weather	Rainfall received in mm at AWS stations from 0830 hrs to 1830 hrs IST of Today. PERINGALKUTHU : 47.5 VELLANIKKARA : 0.0 CHIMONI : 0.0 ENAMAKKAL : 2.0 VILANGANKUNNU : 0.0 VYANTHALA : 2.7
Forecast	<i>As per the latest Radar Imagery, Thunderstorm accompanied with moderate to heavy spell of rainfall with winds gusting to 40 KMPH is expected in the district for next 3 hours</i>
Impact Expected	<ul style="list-style-type: none">• Visibility may become poor leading to traffic congestion.• Water logging / flooding in many parts of low lying area and river banks.• Uprooting of trees may cause damages to power sector.• Partial damages to kutcha houses and huts.• Water logging on major roads leading to traffic congestions.• Chances of Landslide and landslip.• Inundation of low lying areas• Rain could cause adverse impact on Human & Livestock as well as damage to Loose & unsecured structures along the coast line
Action Suggested	<ul style="list-style-type: none">• Traffic may be regulated effectively• People in the affected area may restrict their movement.

COLOR CODES

Very Low	No action
Low	Be updated
Medium	Be prepared
High	Take Action

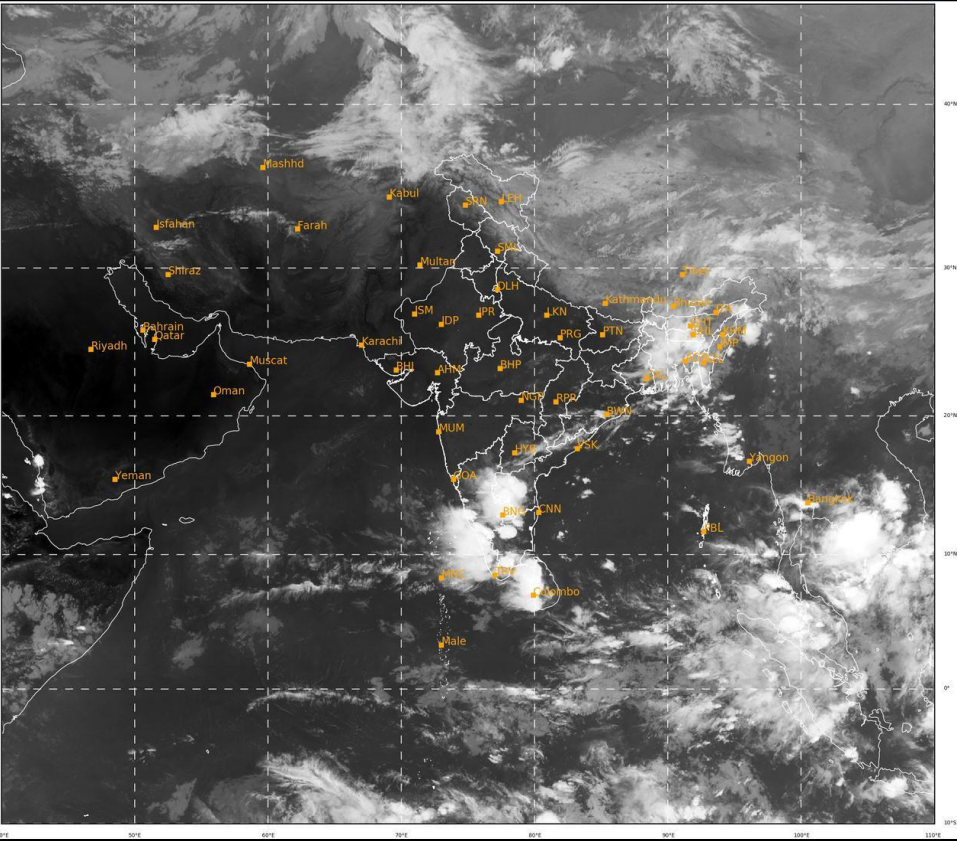
DUTY OFFICER
Meteorological Centre,
Thiruvananthapuram

वेब: www.imdvm.gov.in ईमेल: mc.trv@imd.gov.in फोन: 2322894 / 2322330 / 2330025/2322471, फैक्स: 2332330

Latest Satellite Picture

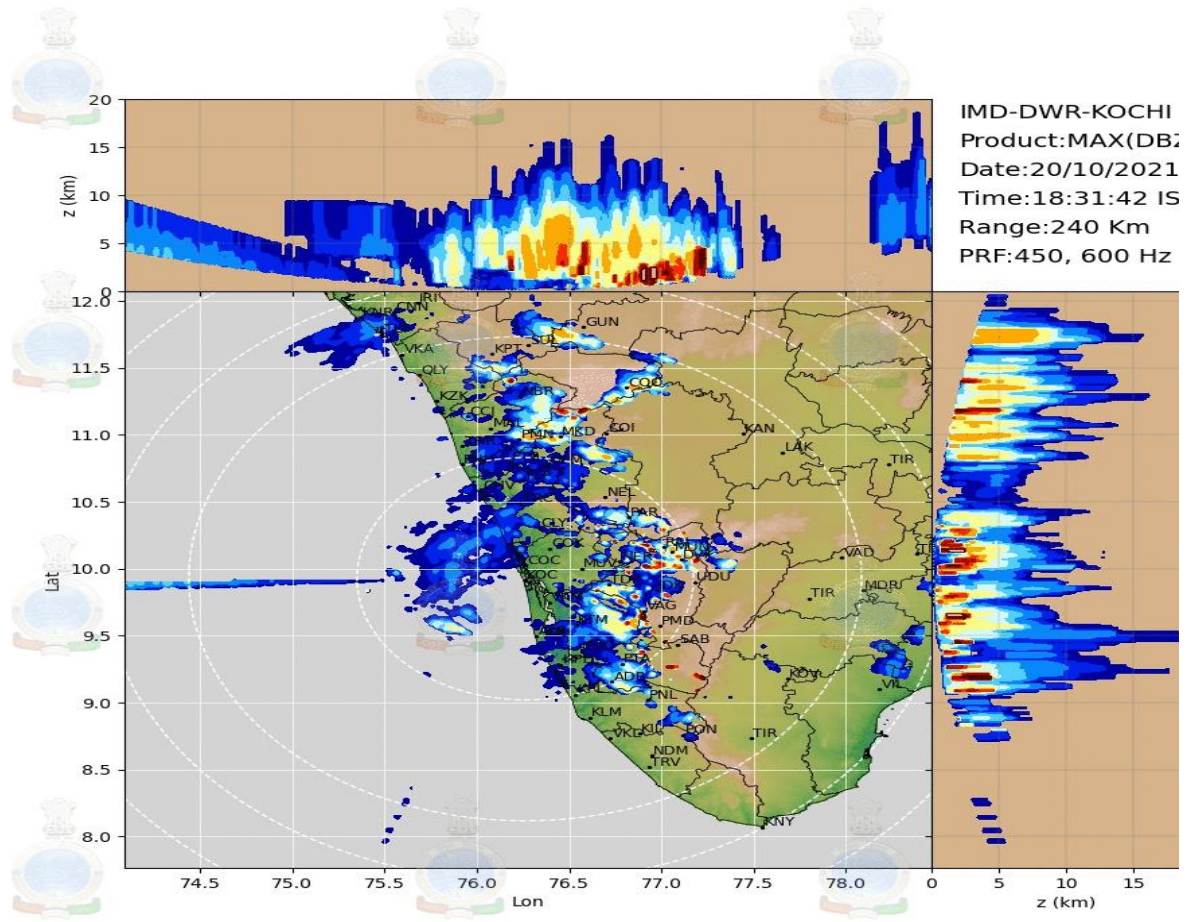
SAT : INSAT-3DR IMG
IMG_TIR2 12.0 um
L1C Mercator

20-10-2021/(1315 to 1342) GMT
20-10-2021/(1845 to 1912) IST



IMD,DELHI

Latest Radar KOC



Legends:

Rainfall Intensity			
Terminology	Rainfall Range	Terminology	Rainfall Range
Light Spell	1 cm /hr	Very Intense Spell	3-5 cm/hr
Moderate Spell	1-2 cm/hr	Extremely Intense Spell	5-10 cm/hr
Intense Spell	2-3 cm/hr	Cloud Burst	>10 cm/hr

Rainfall Categories			
Terminology	Rainfall (in mm)	Terminology	Rainfall (in mm)
Very Light Rainfall	Trace- 2.4	Heavy Rainfall	64.5-115.5
Light Rainfall	2.5-15.5	Very Heavy Rainfall	115.6-204.4
Moderate Rainfall	15.6-64.4	Extremely Heavy Rainfall	>=204.5