

भारत सरकार
भारत मौसम विज्ञान विभाग
(पृथ्वी विज्ञान मंत्रालय)
मौसम केन्द्र
विकास भवन पी ओ
तिरुवनंतपुरम - 695 033



GOVERNMENT OF INDIA
INDIA METEOROLOGICAL
DEPARTMENT
(Ministry of Earth Sciences)
METEOROLOGICAL CENTRE
VikasBhavan P.O
Thiruvananthapuram - 695033

Date: 16/10/2021

Time: 0700 HRS IST

**IMPACT BASED FORECAST FOR HEAVY RAINFALL OVER THIRUVANANTHAPURAM
DISTRICT - WARNING NO. 1**

Update of Ongoing Rainfall Event

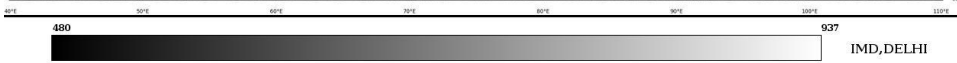
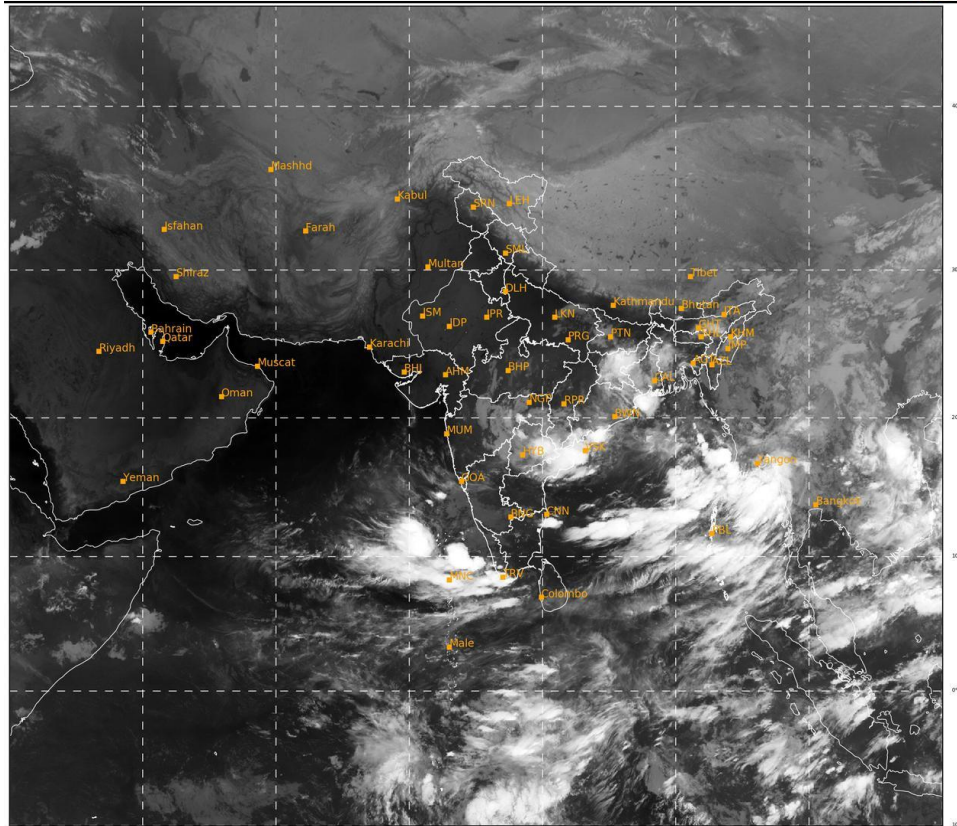
| | |
|-------------------------|--|
| Realized Weather | Rainfall received in mm from 0830 hrs of yesterday to 0530 hrs IST of Today. Thiruvananthapuram observatory: 24.2 mm Thiruvananthapuram Airport:19.6 mm Rainfall received in mm at AWS stations from 0830 hrs of yesterday to 0630 hrs IST of Today. NEYATTINKARA : 54.5 VELLAYANI : 35.5 AIRPORT(CHAKKA) : 20.0 |
| Forecast | <i>As per the latest Radar Imagery, Thunderstorm accompanied by moderate spell of rainfall with winds gusting to 40 KMPH is expected in the district for next 3 hours</i> |
| Impact Expected | <ul style="list-style-type: none">• Visibility may become poor leading to traffic congestion.• Water logging / flooding in many parts of low lying area and river banks.• Uprooting of trees may cause damages to power sector.• Partial damages to kutcha houses and huts.• Water logging on major roads leading to traffic congestions.• Chances of Landslide and landslip.• Inundation of low lying areas• Rain could cause adverse impact on Human & Livestock as well as damage to Loose & unsecured structures along the coast line |
| Action Suggested | <ul style="list-style-type: none">• Traffic may be regulated effectively• People in the affected area may restrict their movement. |
| COLOR CODES | |
| Very Low | No action |
| Low | Be updated |
| Medium | Be prepared |
| High | Take Action |

DUTY OFFICER
Meteorological Centre,
Thiruvananthapuram

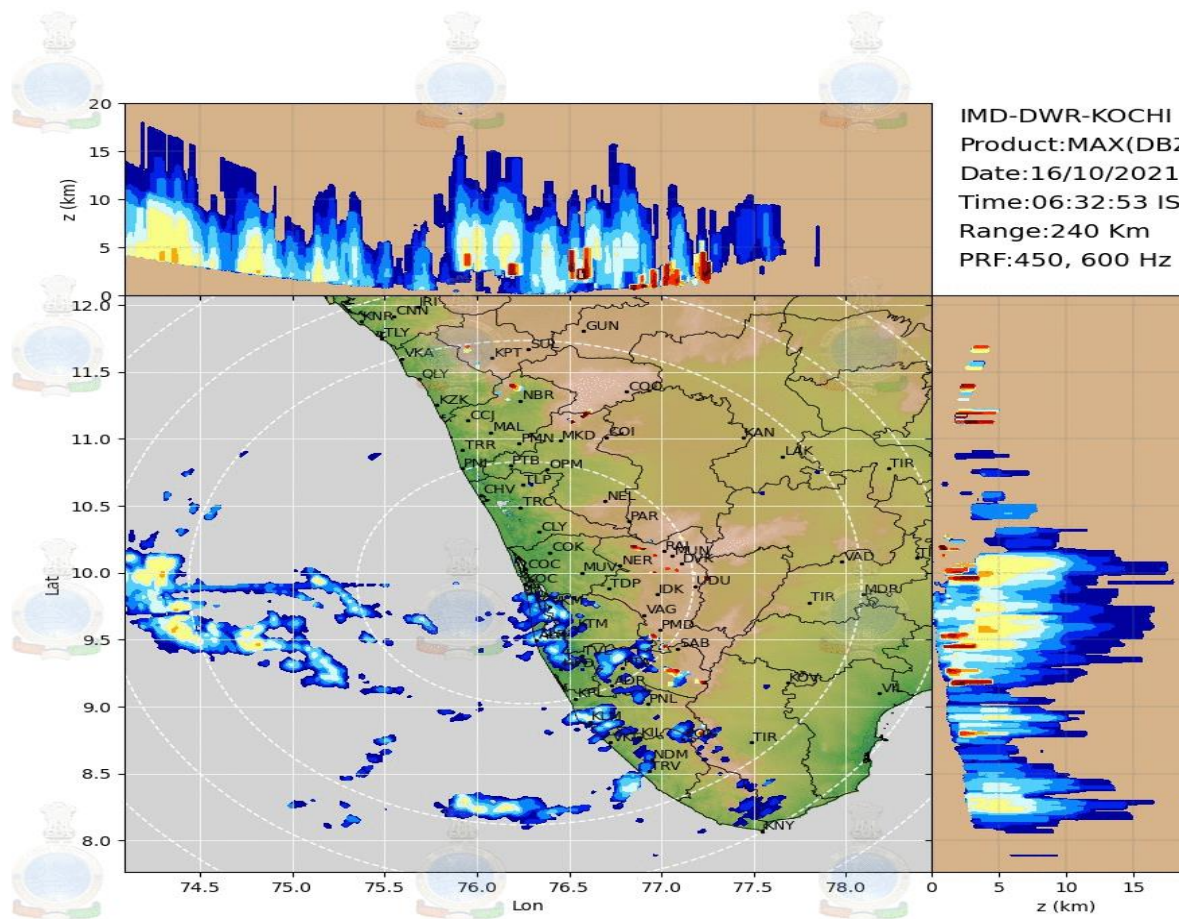
Latest Satellite Picture

SAT : INSAT-3DR IMG
IMG_TIR2 12.0 um
LIC Mercator

16-10-2021/(0045 to 0112) GMT
16-10-2021/(0615 to 0642) IST



Latest Radar KOC



Legends:

| Rainfall Intensity | | | |
|--------------------|----------------|-------------------------|----------------|
| Terminology | Rainfall Range | Terminology | Rainfall Range |
| Light Spell | 1 cm /hr | Very Intense Spell | 3-5 cm/hr |
| Moderate Spell | 1-2 cm/hr | Extremely Intense Spell | 5-10 cm/hr |
| Intense Spell | 2-3 cm/hr | Cloud Burst | >10 cm/hr |

| Rainfall Categories | | | |
|---------------------|------------------|--------------------------|------------------|
| Terminology | Rainfall (in mm) | Terminology | Rainfall (in mm) |
| Very Light Rainfall | Trace- 2.4 | Heavy Rainfall | 64.5-115.5 |
| Light Rainfall | 2.5-15.5 | Very Heavy Rainfall | 115.6-204.4 |
| Moderate Rainfall | 15.6-64.4 | Extremely Heavy Rainfall | >=204.5 |