

भारत सरकार
भारत मौसम विज्ञान विभाग
(पृथ्वी विज्ञान मंत्रालय)
मौसम केन्द्र
विकास भवन पी ओ
तिरुवनंतपुरम - 695 033



GOVERNMENT OF INDIA
INDIA METEOROLOGICAL
DEPARTMENT
(Ministry of Earth Sciences)
METEOROLOGICAL CENTRE
VikasBhavan P.O
Thiruvananthapuram - 695033

Date: 12/10/2021

Time: 0900 HRS IST

IMPACT BASED FORECAST FOR HEAVY RAINFALL OVER WAYANAD DISTRICT – WARNING
NO. 1

Update of Ongoing Rainfall Event

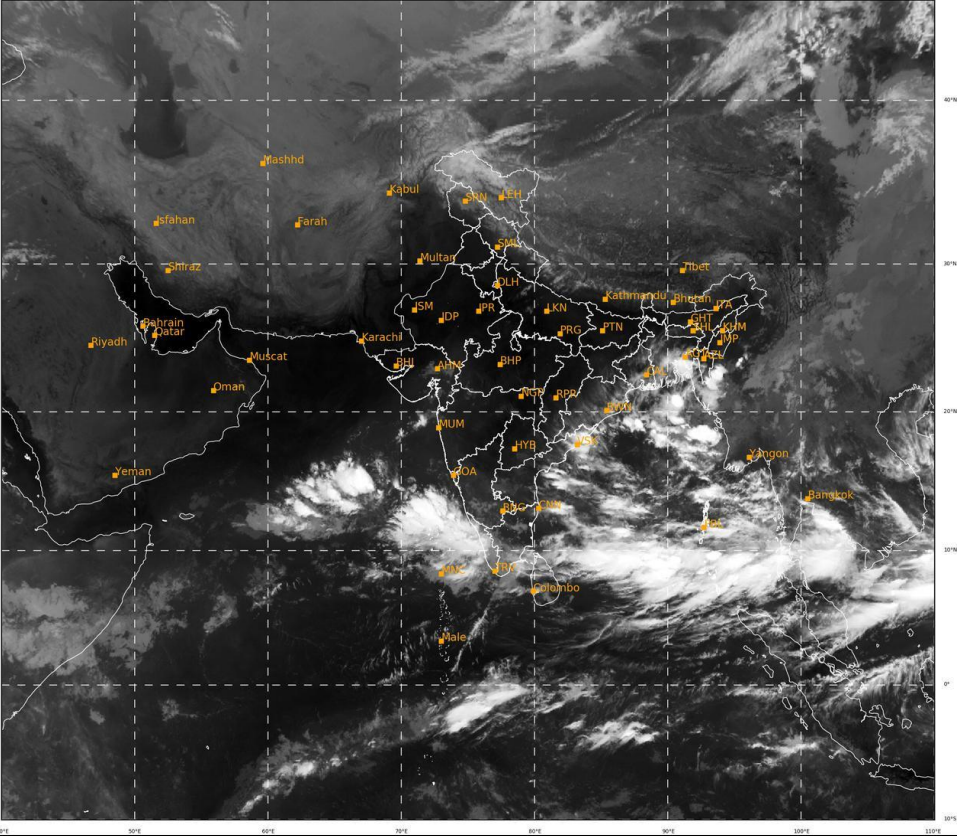
Realized Weather	Rainfall received in mm during 24hrs ended at 0830 hrs IST of yesterday AMBALAVAYAL : 6.7 KUPPADY : 0.0 MANANTODDY : 17.0 MEENANGADI : - MEENANGADI ARG : 5.5 PADINJARATHARA DAM AWS : 6.0 POOKOT : - VYTTIRI : 7.8 Rainfall received in mm at AWS stations from 0830 hrs of 11.10.2021 to 0830 hrs IST of Today. AMBALAVAYAL_AFMU : 9.5 PADINJARATHARA_DAM : 19.5 MEENANGADI : 5.5
Forecast	<i>As per the latest Radar Imagery, Moderate spell of rainfall with winds gusting to 40 KMPH is expected in the district for next 3 hours</i>
Impact Expected	<ul style="list-style-type: none">• Visibility may become poor leading to traffic congestion.• Water logging / flooding in many parts of low lying area and river banks.• Uprooting of trees may cause damages to power sector.• Partial damages to kutchha houses and huts.• Water logging on major roads leading to traffic congestions.• Chances of Landslide and landslip.• Inundation of low lying areas• Rain could cause adverse impact on Human & Livestock as well as damage to Loose & unsecured structures along the coast line
Action Suggested	<ul style="list-style-type: none">• Traffic may be regulated effectively• People in the affected area may restrict their movement.
COLOR CODES	
Very Low	No action
Low	Be updated
Medium	Be prepared
High	Take Action

DUTY OFFICER
Meteorological Centre,
Thiruvananthapuram

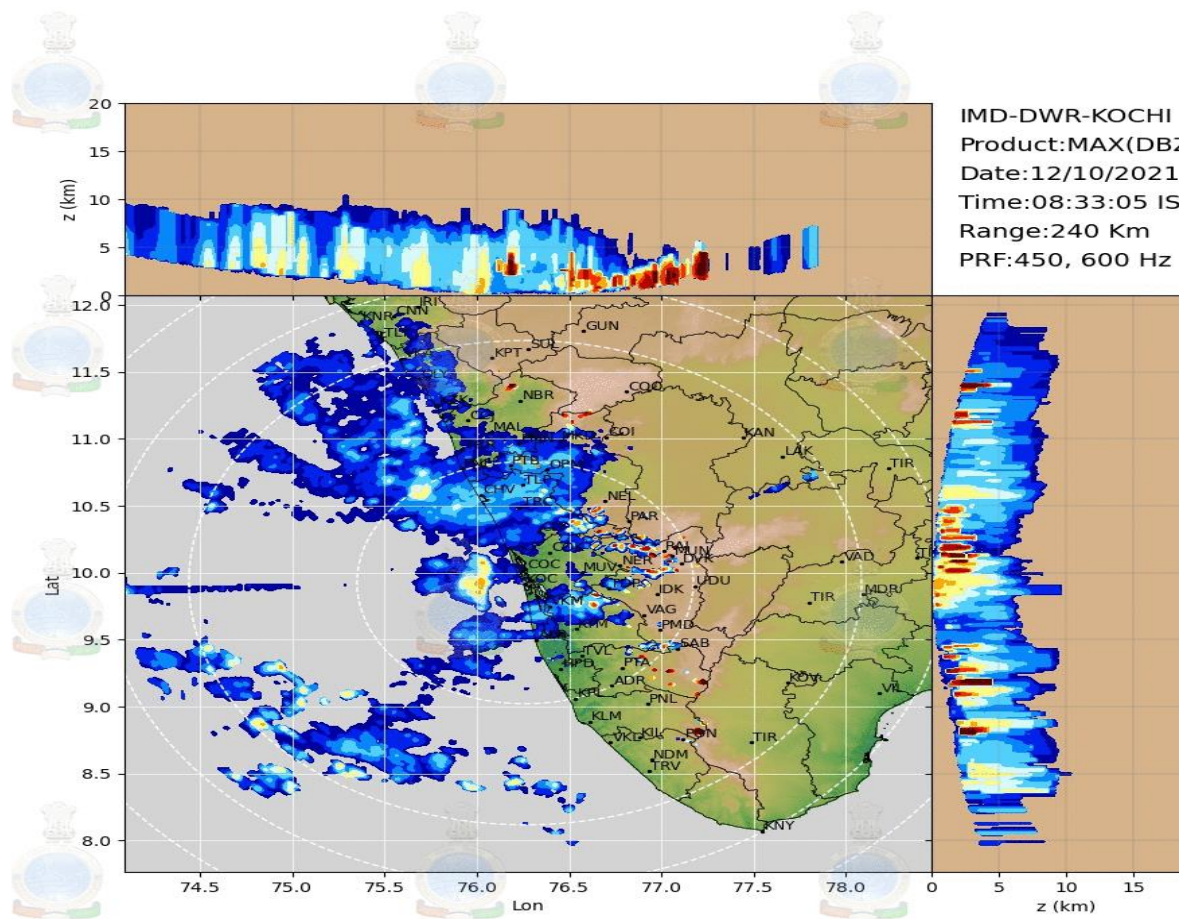
Latest Satellite Picture

SAT : INSAT-3D IMG
IMG_TIR2 12.0 um
LIC Mercator

12-10-2021/(0300 to 0326) GMT
12-10-2021/(0830 to 0856) IST



Latest Radar KOC



Legends:

Rainfall Intensity			
Terminology	Rainfall Range	Terminology	Rainfall Range
Light Spell	1 cm /hr	Very Intense Spell	3-5 cm/hr
Moderate Spell	1-2 cm/hr	Extremely Intense Spell	5-10 cm/hr
Intense Spell	2-3 cm/hr	Cloud Burst	>10 cm/hr

Rainfall Categories			
Terminology	Rainfall (in mm)	Terminology	Rainfall (in mm)
Very Light Rainfall	Trace- 2.4	Heavy Rainfall	64.5-115.5
Light Rainfall	2.5-15.5	Very Heavy Rainfall	115.6-204.4
Moderate Rainfall	15.6-64.4	Extremely Heavy Rainfall	>=204.5