

The Third Pole Climate Forum (TPCF-3) and Meeting of The Third
Pole Regional Climate Center Network (TPRCC-Network) Task
Team

3 – 5 June 2025
New Delhi, India

MD. NURUL KARIM
Bangladesh Meteorological Department (BMD)
email: n_karim05@yahoo.com
swcbmd@yahoo.com

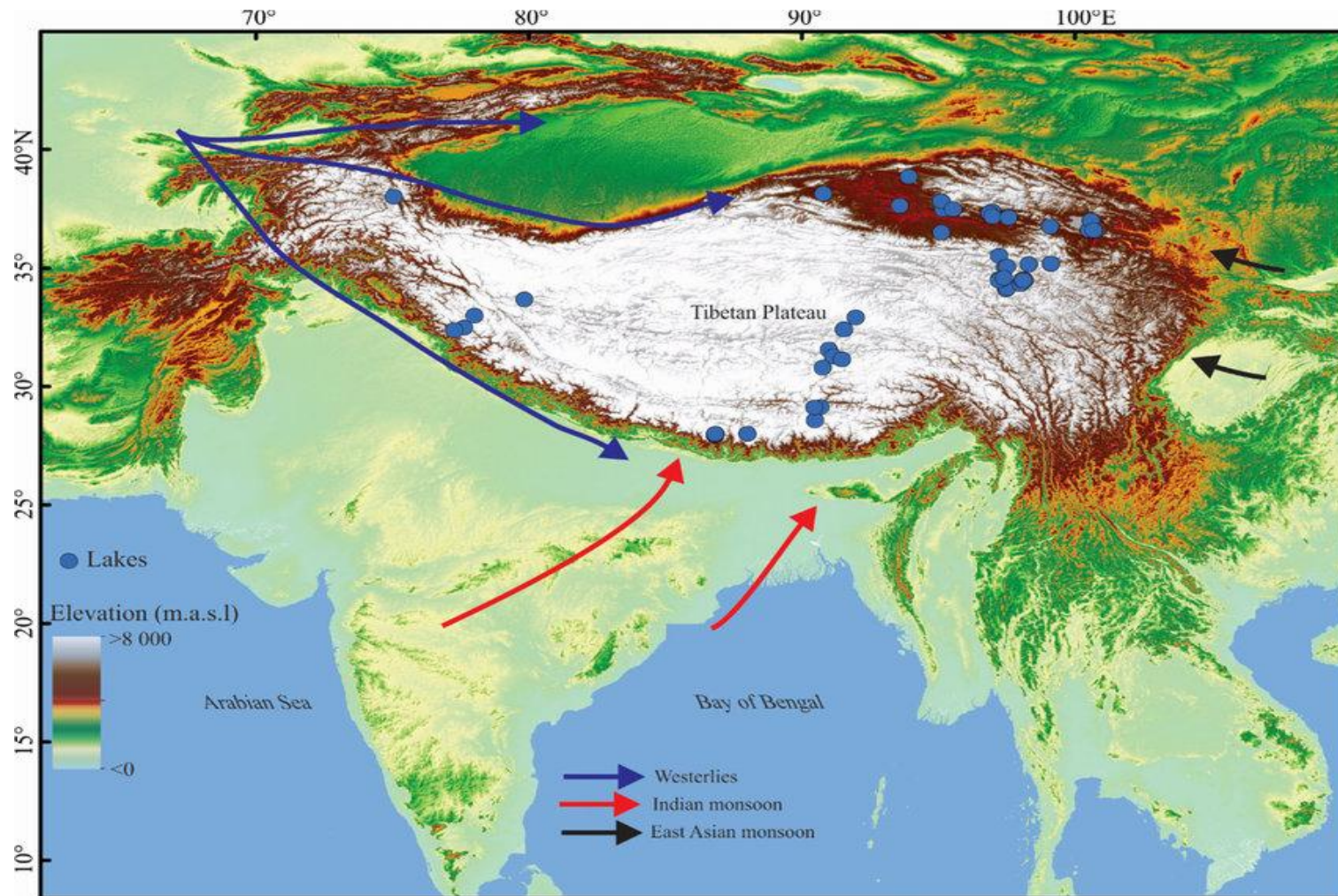
Presentation on Climate of Bangladesh

1. The current climate conditions and
2. National outlook for JJAS 2025 in Bangladesh

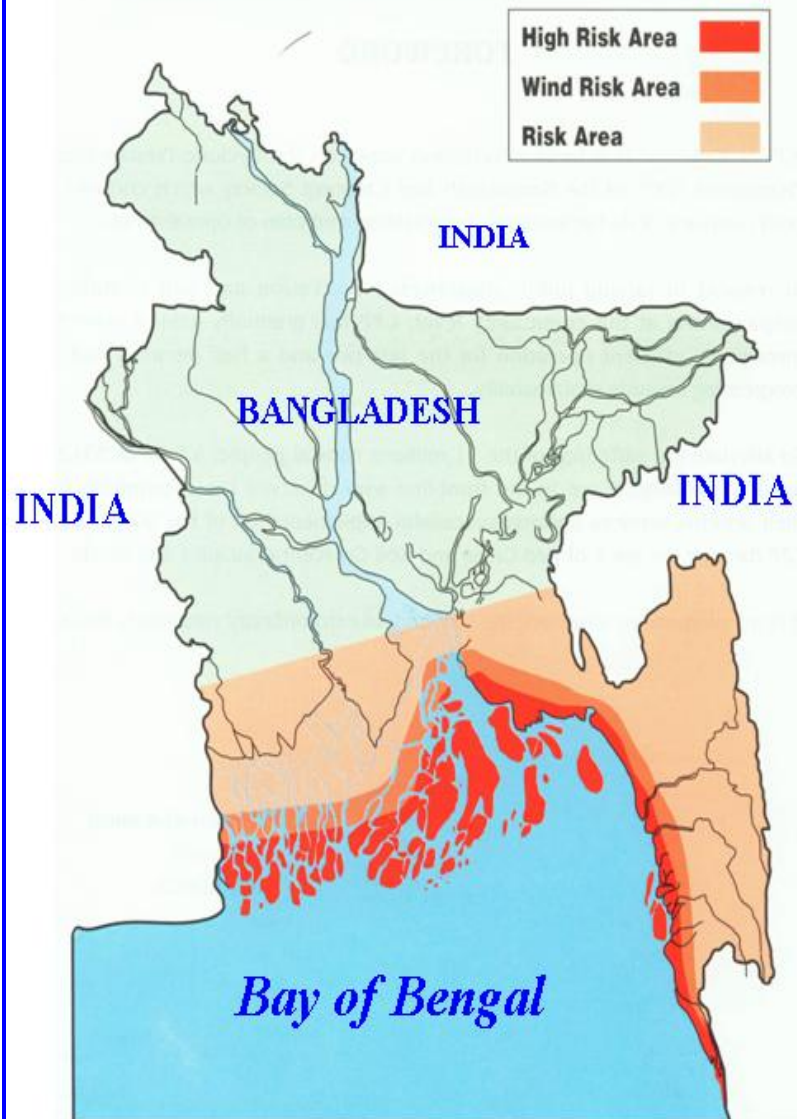
Bangladesh (South- East Asia):

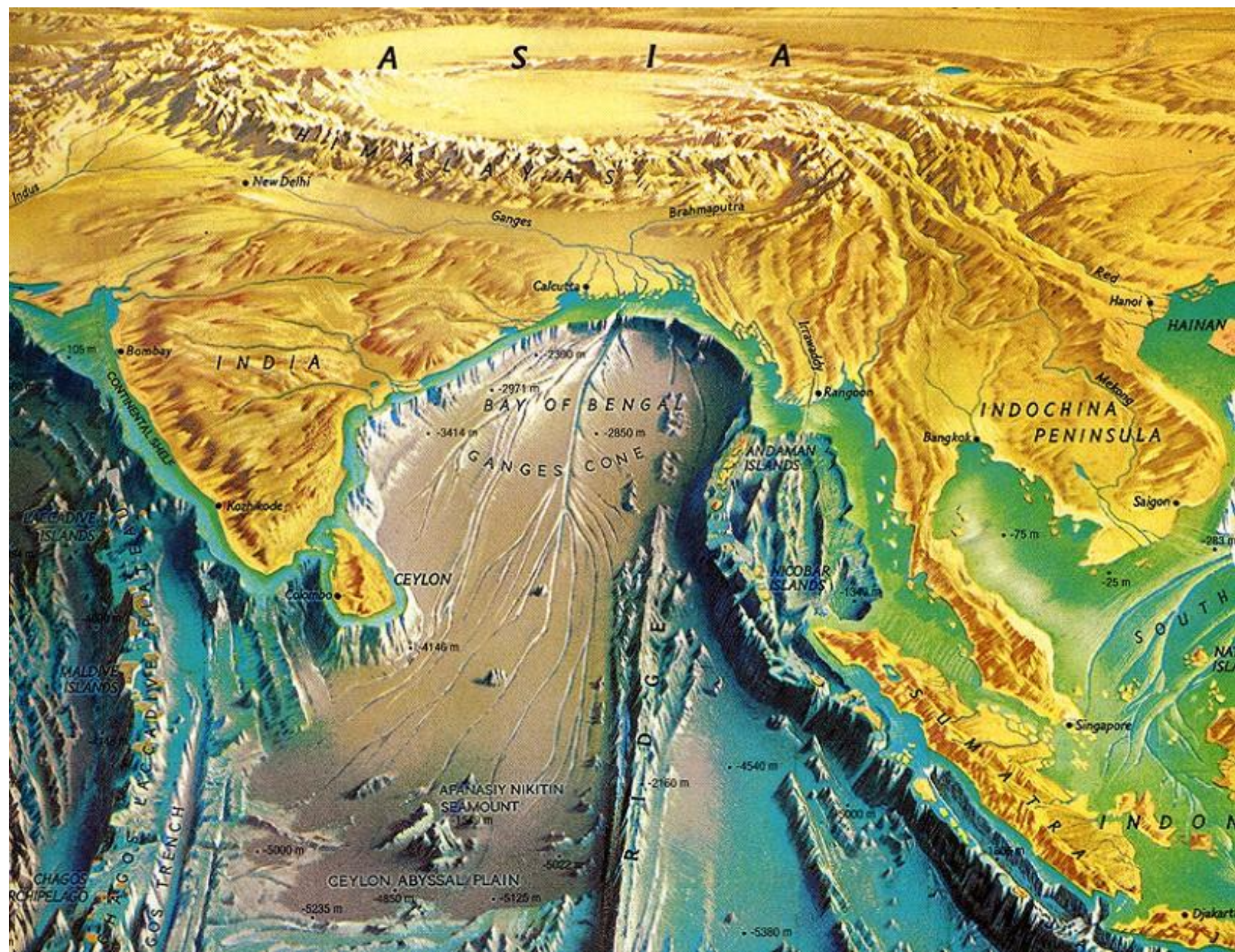
- **Location** - LAT= 21° - 26° N & LONG= 88° - 93° E
- **Area:** About 1, 48,875 Sq km, A small but densely populated country. Its population growth is high.
-
- **Population:** About 1,70,00 00 00 Million
- **Geographical feature:** Tropical country, plane low land and have many rivers, of them five rivers are big. Also there have some small hills.
- **Economic Activity:** Mainly agriculture. Also have some industry, forest, fishing hatchery, dairy and poultry firm etc.

Location Map of Third pole Region



AREAS AFFECTED BY CYCLONE





Climate of Bangladesh

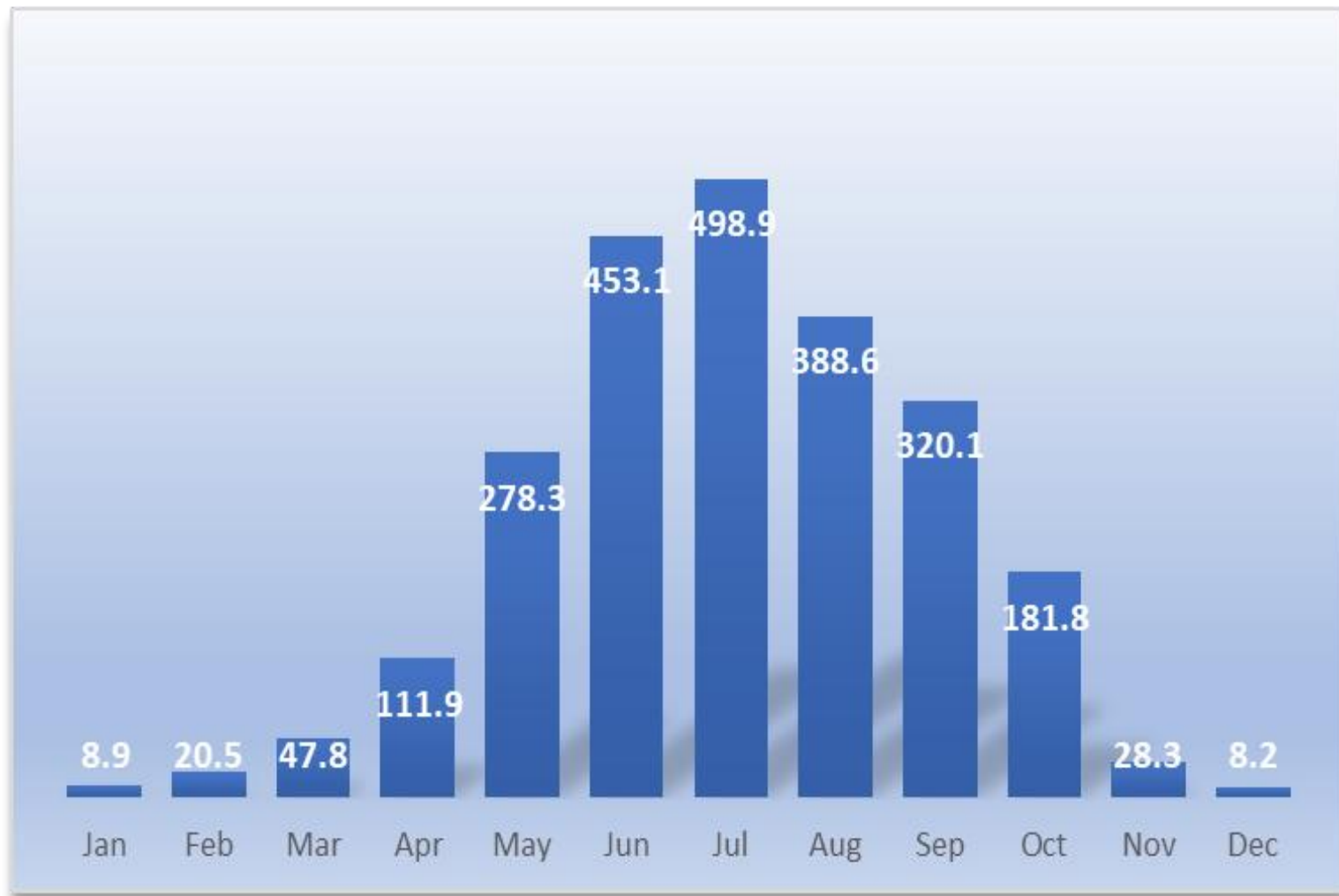
- Bangladesh is the most disaster prone area in the world.
- Most of these disasters are meteorological and hydrological in nature. Such as-
 - Cyclone & associated Storm Surge
 - Nor'westers/Tornadoes
 - Drought.
 - Floods.
 - River Erosion
 - Heat Waves and Cold Waves
 - Earthquakes and Tsunami
 - Land slide

MONSOON OF BANGLADESH

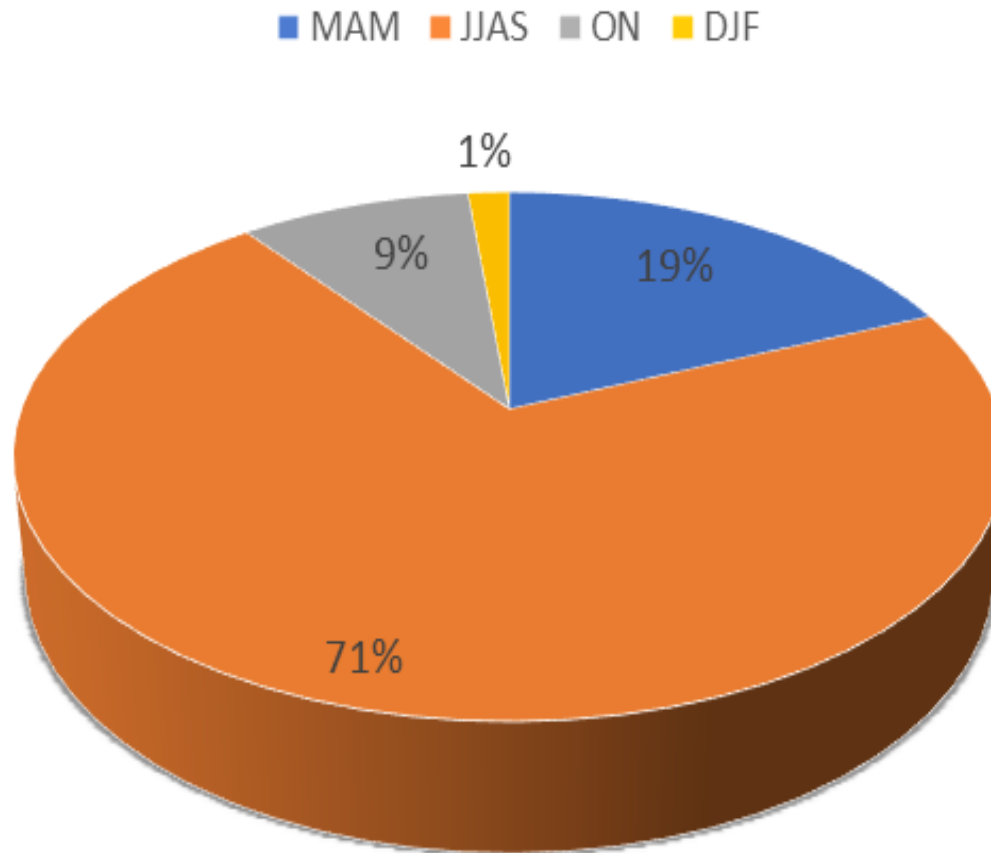
- Bangladesh is in the sub-tropical monsoon climate zone based on Pressure, rainfall and temperature. The climate of this country can be described under the following four seasons :-
 - a. Winter or North-East Monsoon** : This season comprises of December, January and February : Average rain fall is about 1.% of the total annual rainfall. Mean temp. is 18-21⁰C
 - b. Summer or Pre-Monsoon** : Consists of March, April and May. Mean temp. is 23-30 deg. Celsius and average rain fall is 19%.
 - c. South-West Monsoon or Monsoon** : June, July, August and September are combined. Average rain fall of this season is about 71% of the total annual rainfall.
 - d. Autumn or Post-Monsoon** : October and November and average rain fall receives in this season is about 9%.

Current Climate of Bangladesh (1991 -2020)

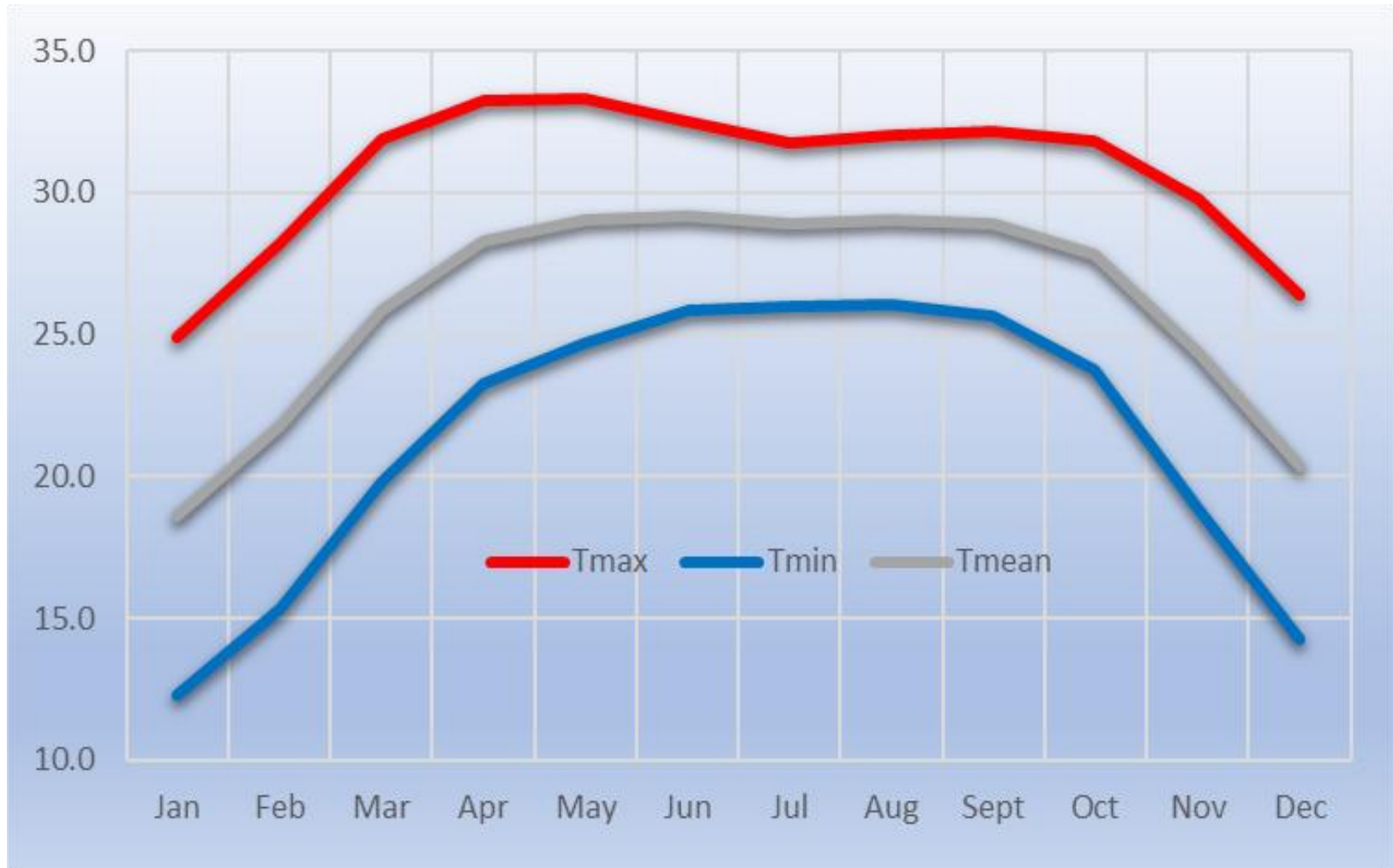
Monthly Distribution of Normal Rainfall in BD



Seasonal Distribution of Normal Rainfall



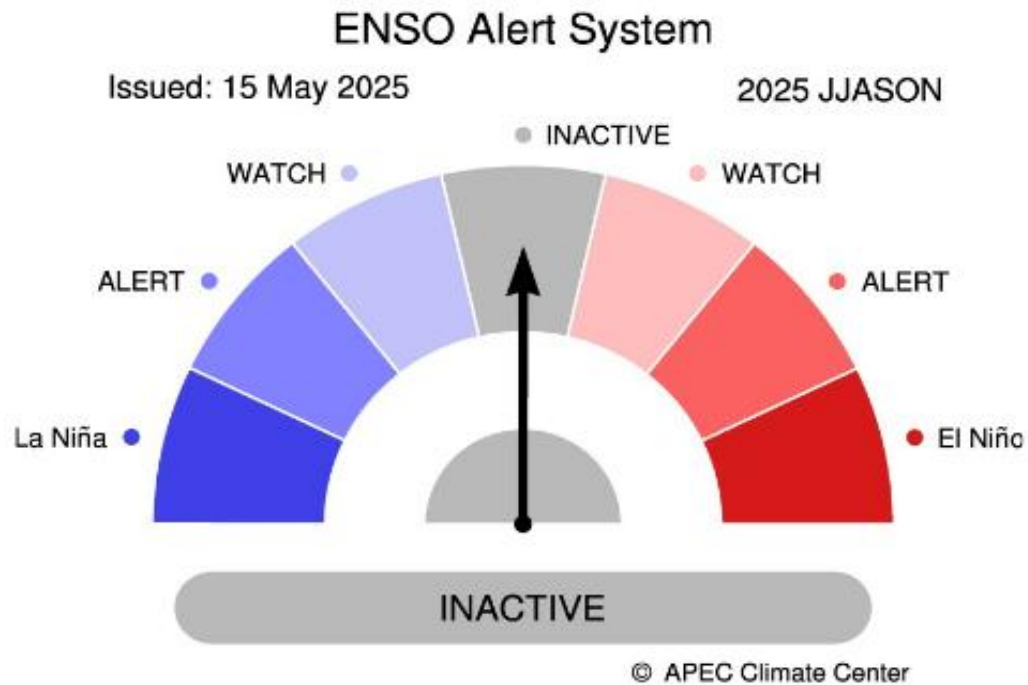
Monthly Distribution of Normal Temperature

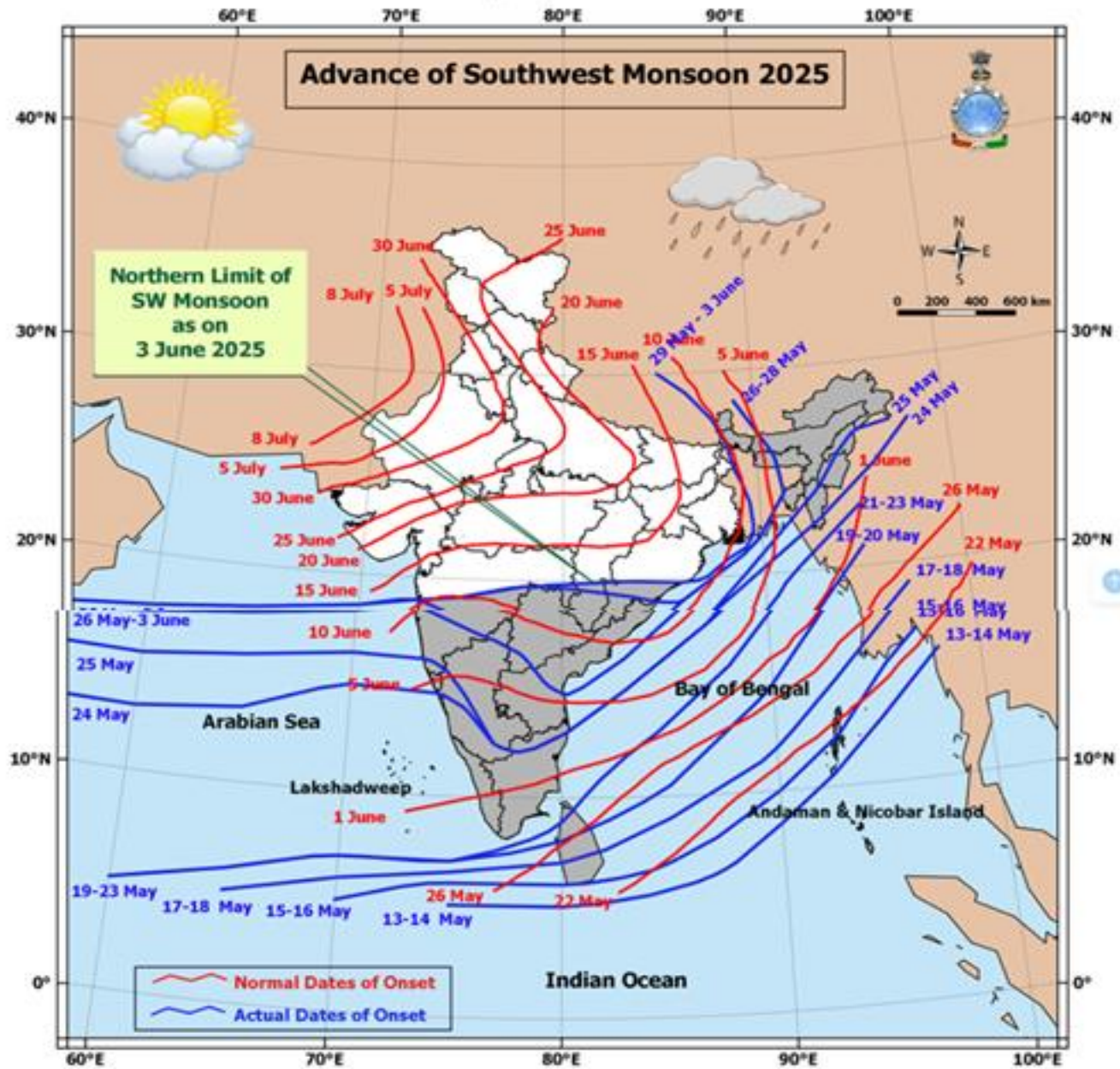


1. National outlook for JJAS 2025 in Bangladesh.

Outlook for Southwest Monsoon 2025

SST and ENSO Forecast





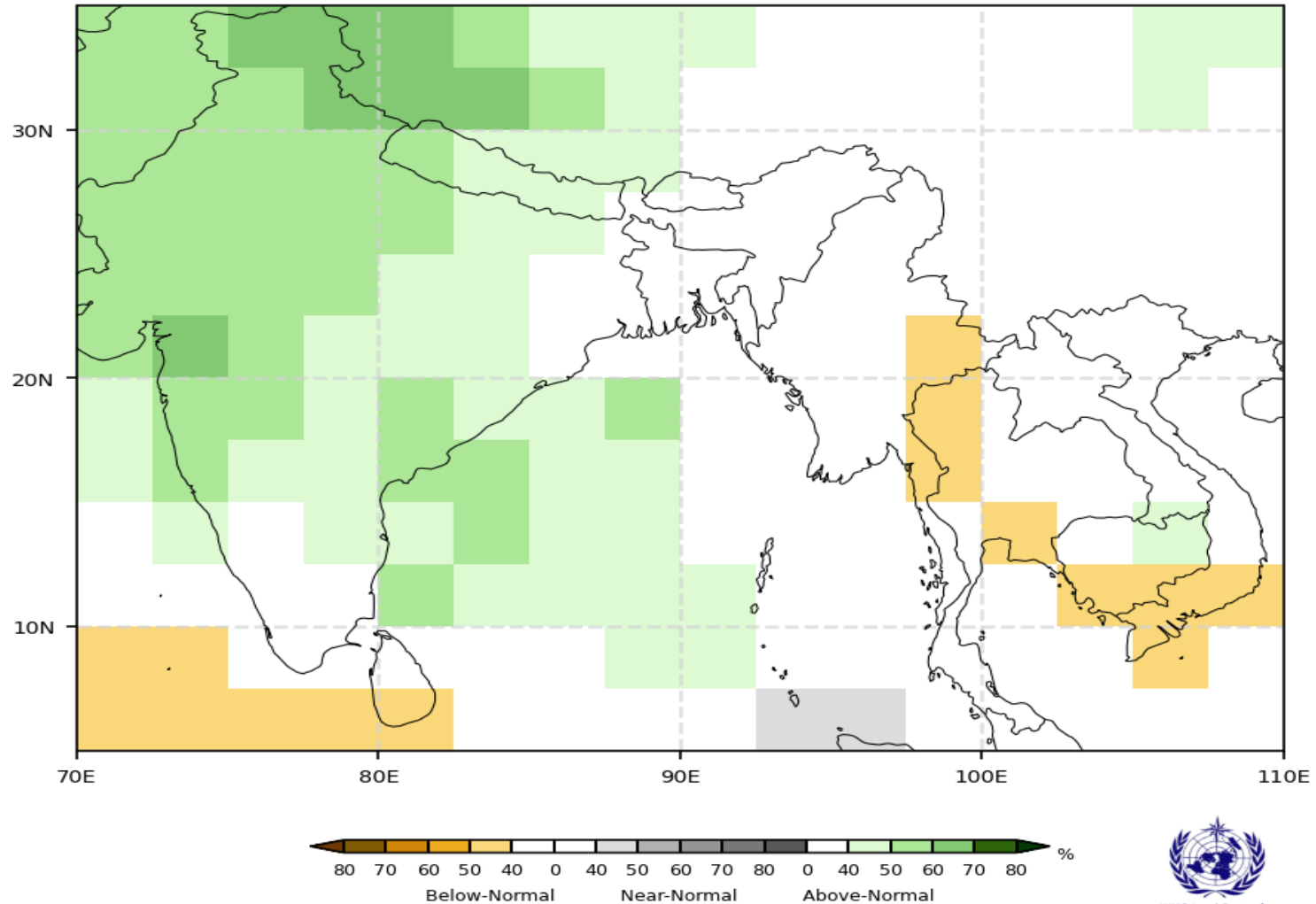
National Outlook for JJAS 2025 Southwest Monsoon

Probabilistic Multi-Model Ensemble Forecast

CMCC, CPTEC, ECMWF, Exeter, Melbourne, Montreal, Offenbach, Seoul, Tokyo, Toulouse, Washington

Precipitation : JJAS2025

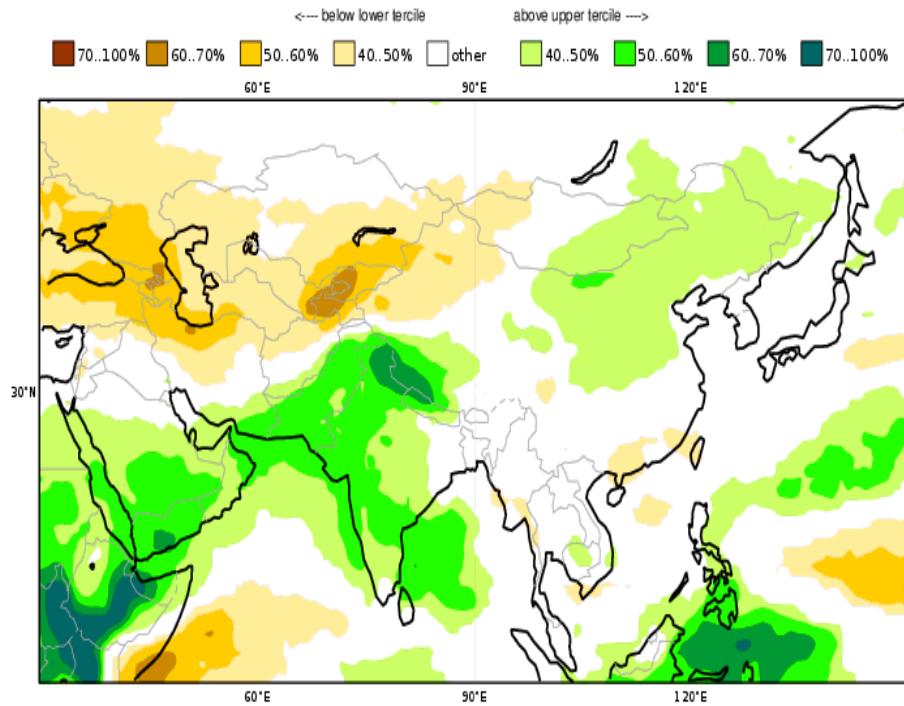
(issued on May2025)



C3S multi-system seasonal forecast ECMWF/Met Office/Météo-France/CMCC/DWD/NCEP/JMA/ECCC/BC
 Prob(most likely category of precipitation)
 JJA 20

Nominal forecast start: 01/05/25

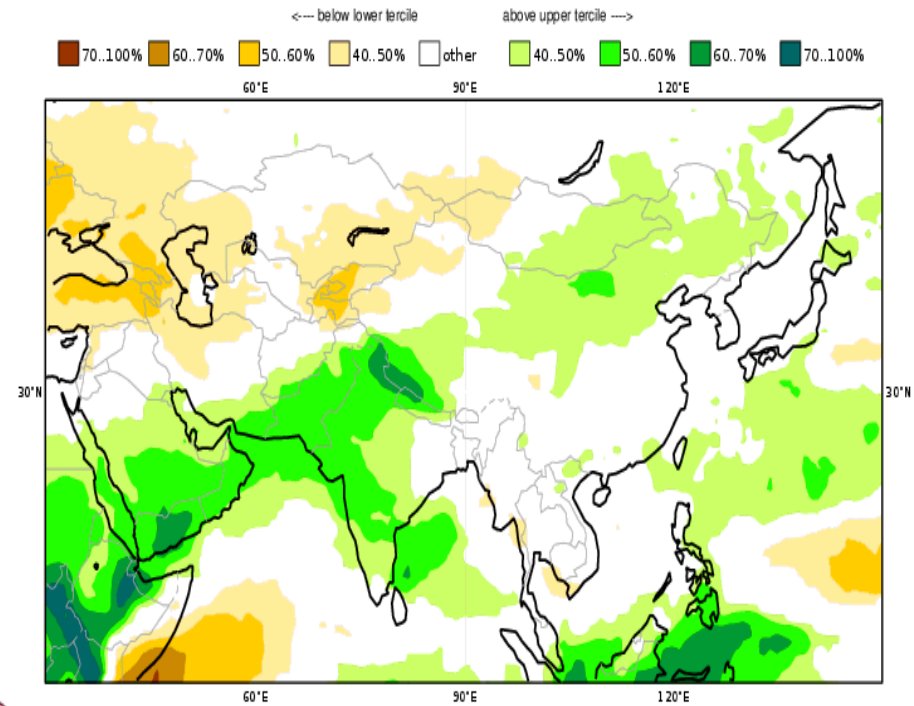
Unweighted mean



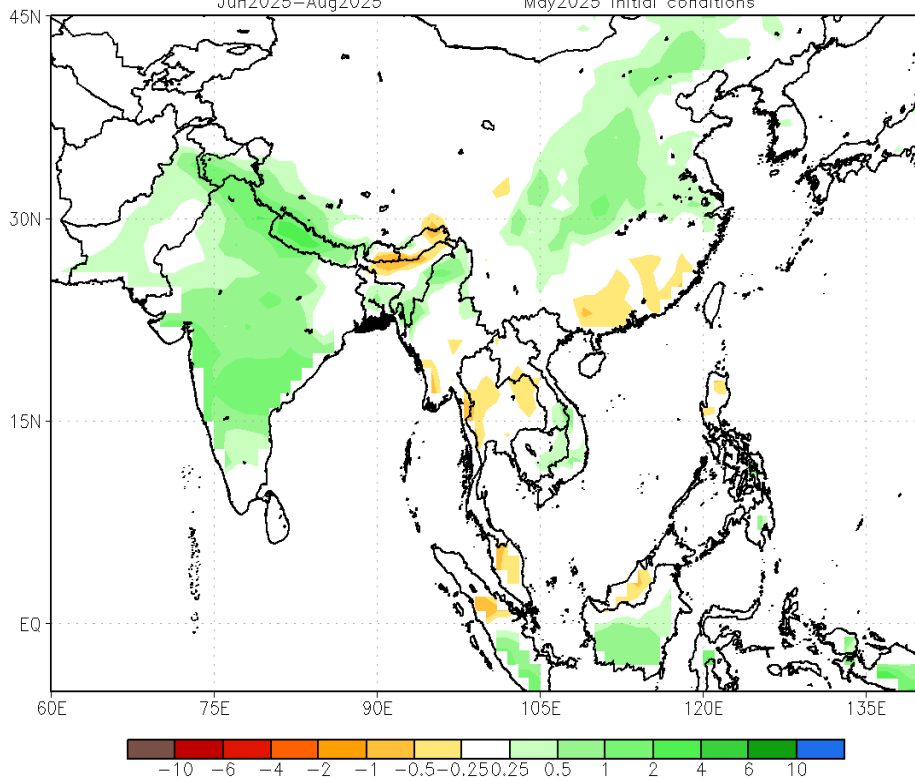
C3S multi-system seasonal forecast ECMWF/Met Office/Météo-France/CMCC/DWD/NCEP/JMA/ECCC/BOM
 Prob(most likely category of precipitation)
 JAS 2025

Nominal forecast start: 01/05/25

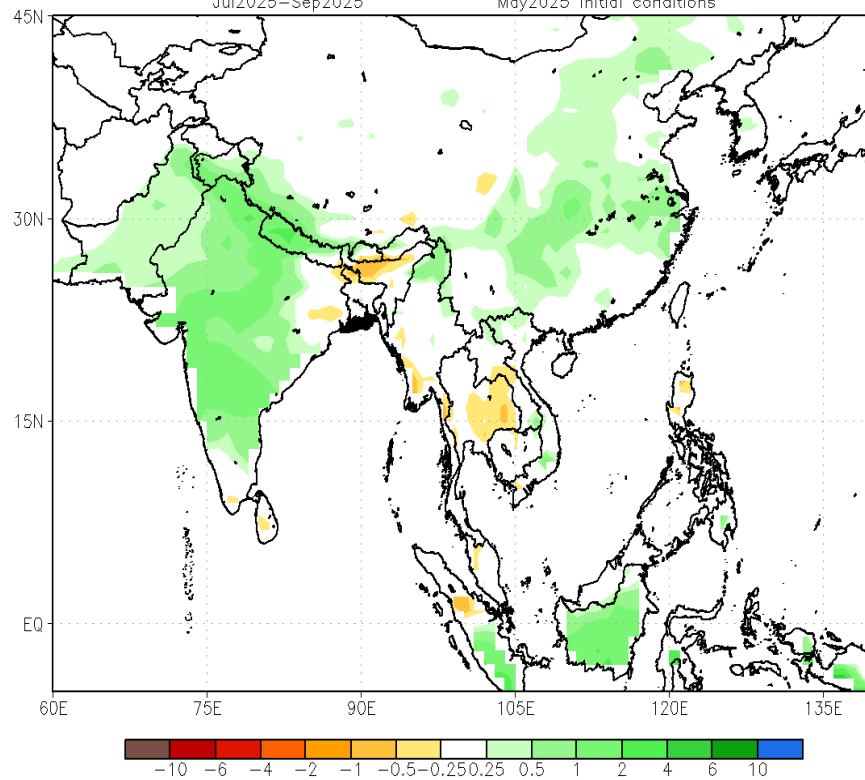
Unweighted mean



NMME Precipitation Anomalies (mm/day)
Jun2025–Aug2025 May2025 initial conditions



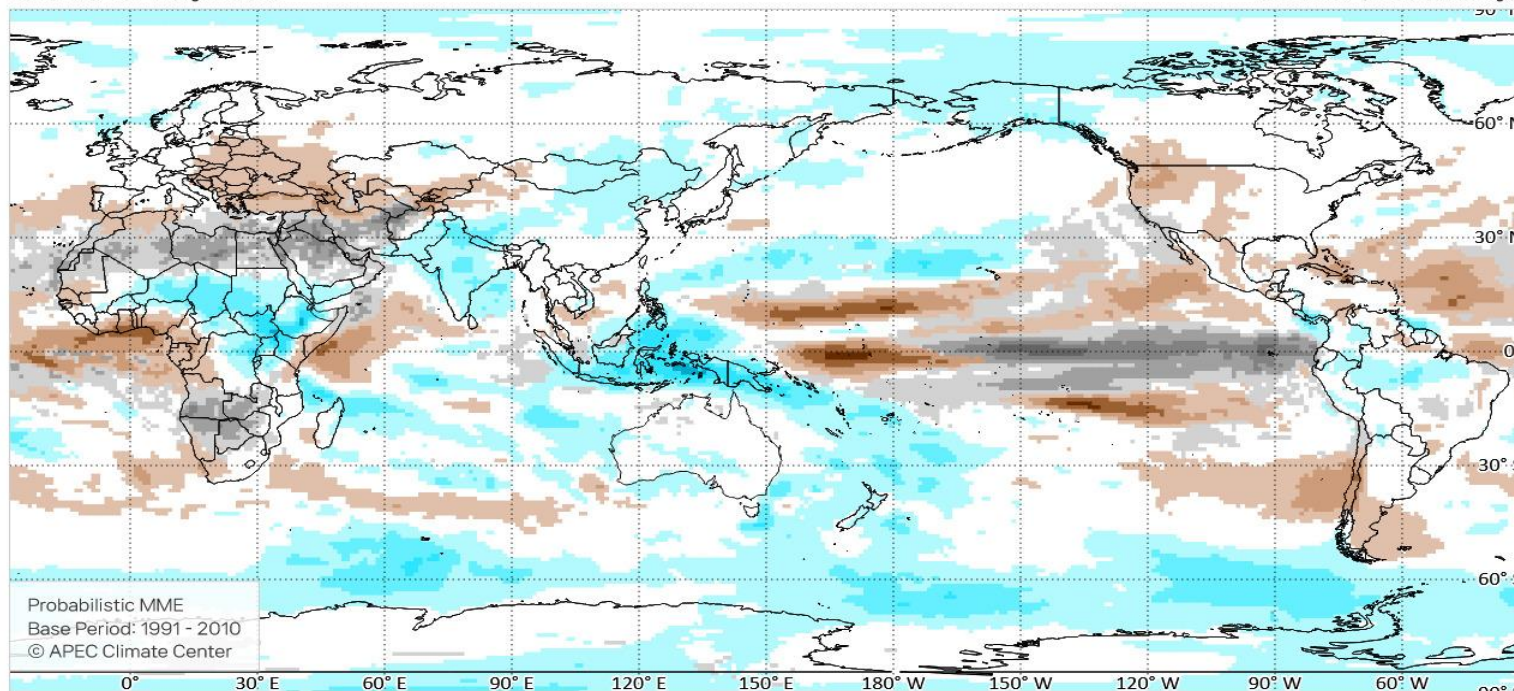
NMME Precipitation Anomalies (mm/day)
Jul2025–Sep2025 May2025 initial conditions



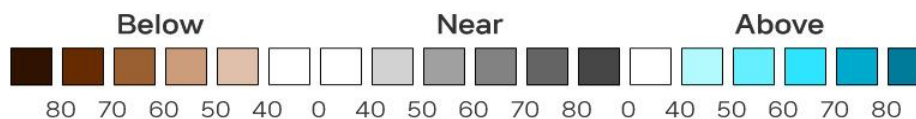
Precipitation for June 2025-August 2025

Issued: 15 May 2025

Unit: % (Probability)



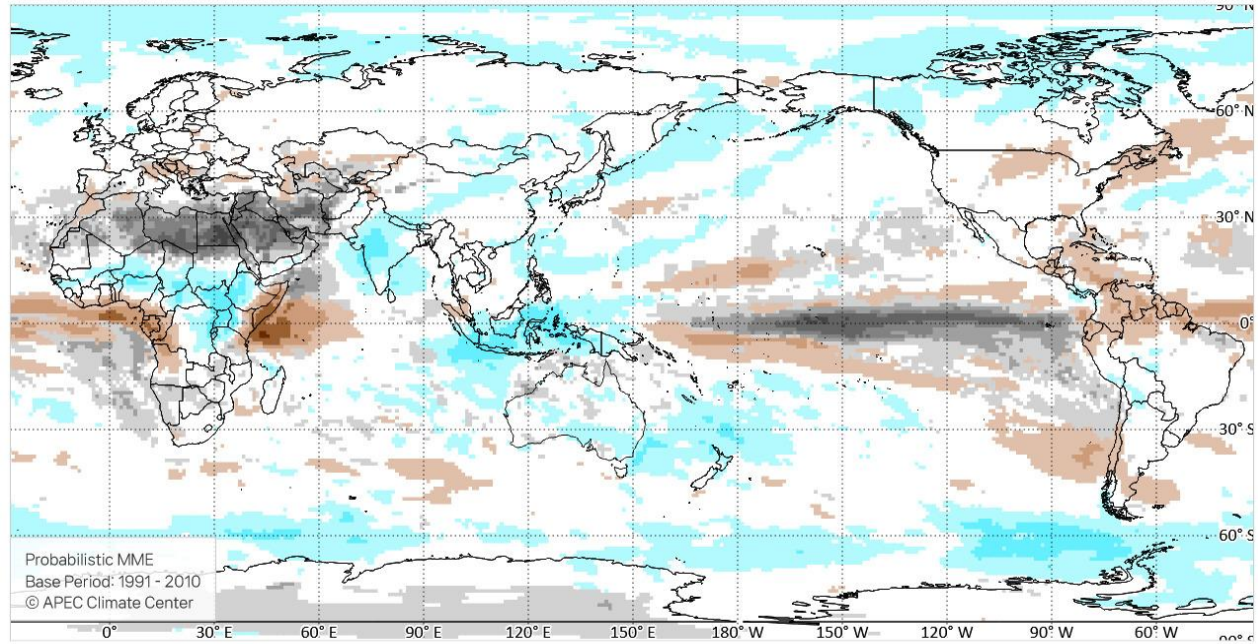
Probabilistic MME
Base Period: 1991 - 2010
© APEC Climate Center



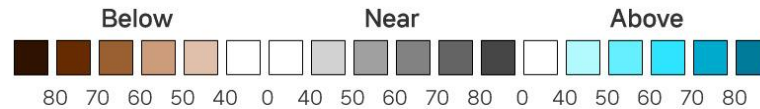
Precipitation for September 2025

Issued: 15 May 2025

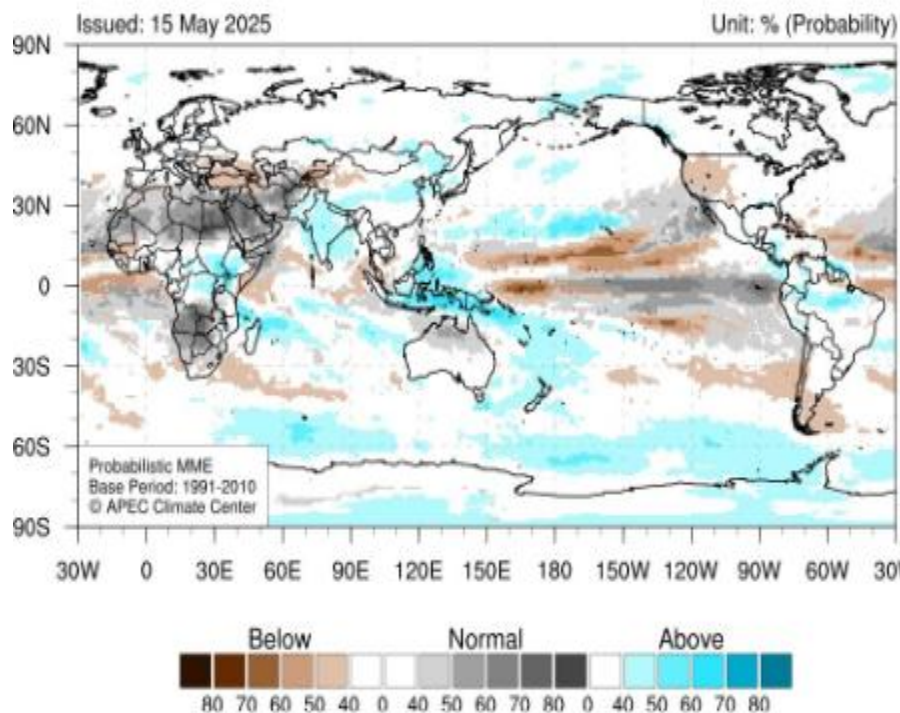
Unit: % (Probability)



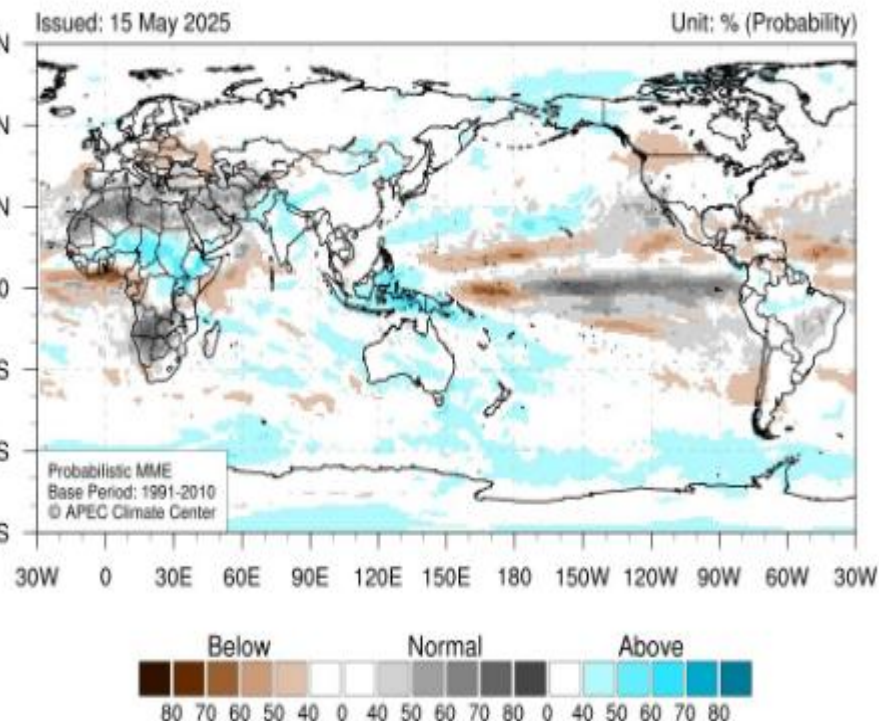
Probabilistic MME
Base Period: 1991 - 2010
© APEC Climate Center



Precipitation for June 2025



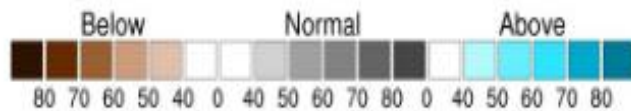
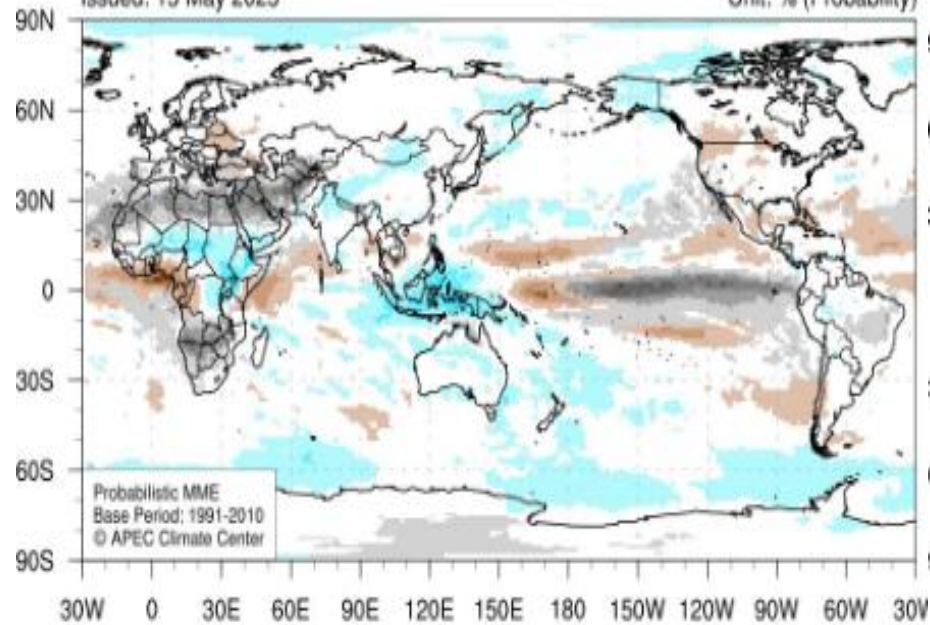
Precipitation for July 2025



Precipitation for August 2025

Issued: 15 May 2025

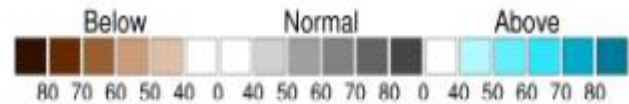
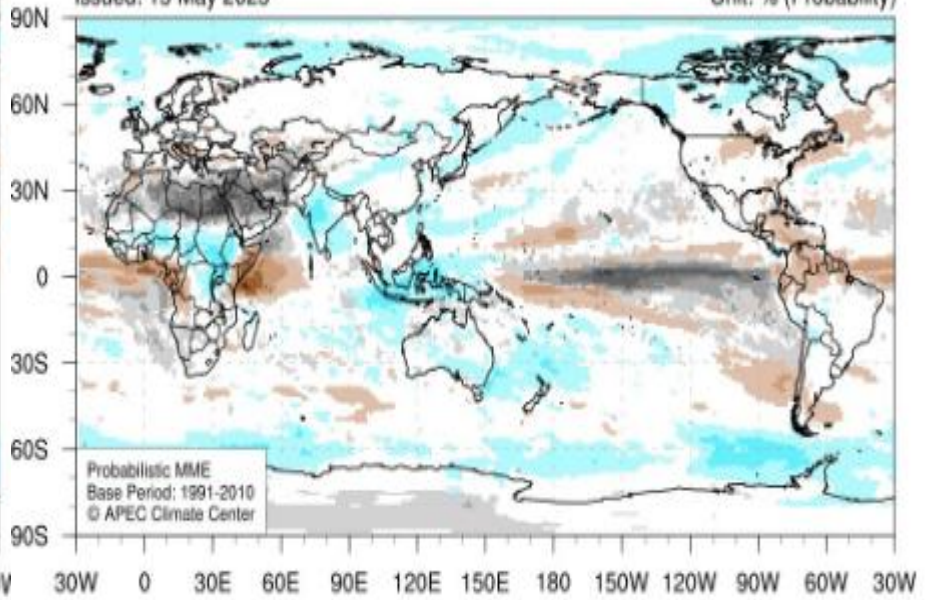
Unit: % (Probability)



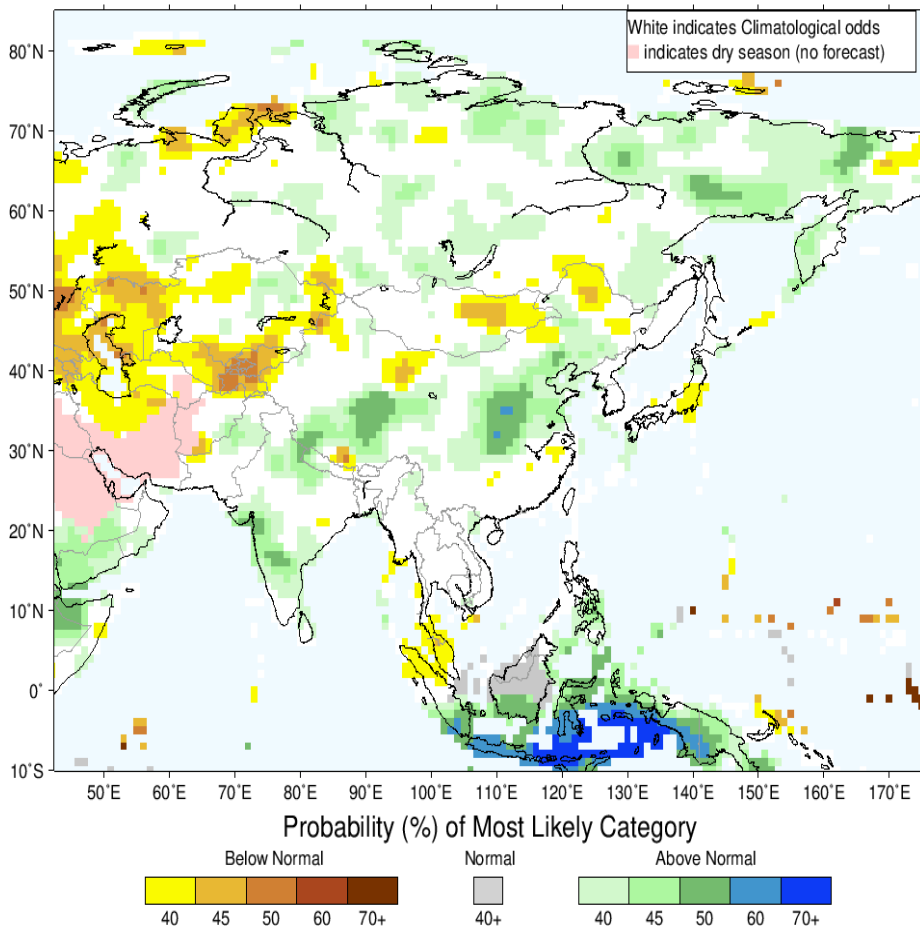
Precipitation for September 2025

Issued: 15 May 2025

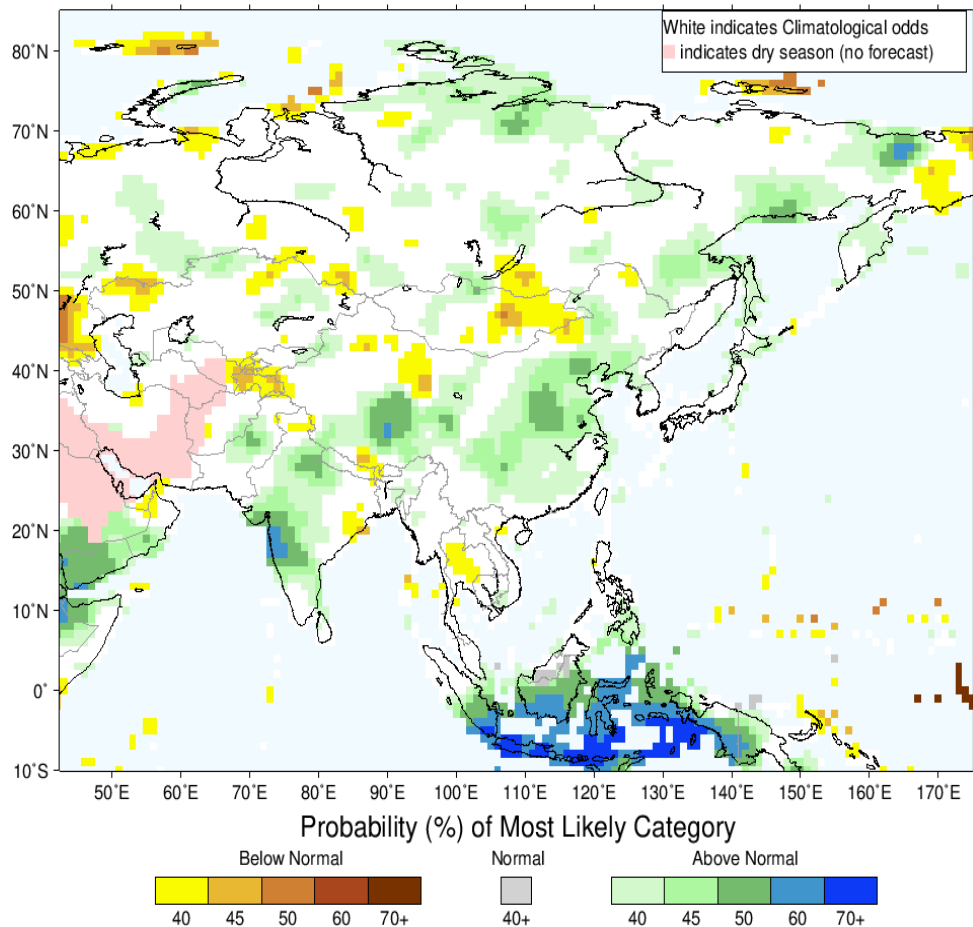
Unit: % (Probability)



IRI Multi-Model Probability Forecast for Precipitation for
June–July–August 2025, Issued May 2025

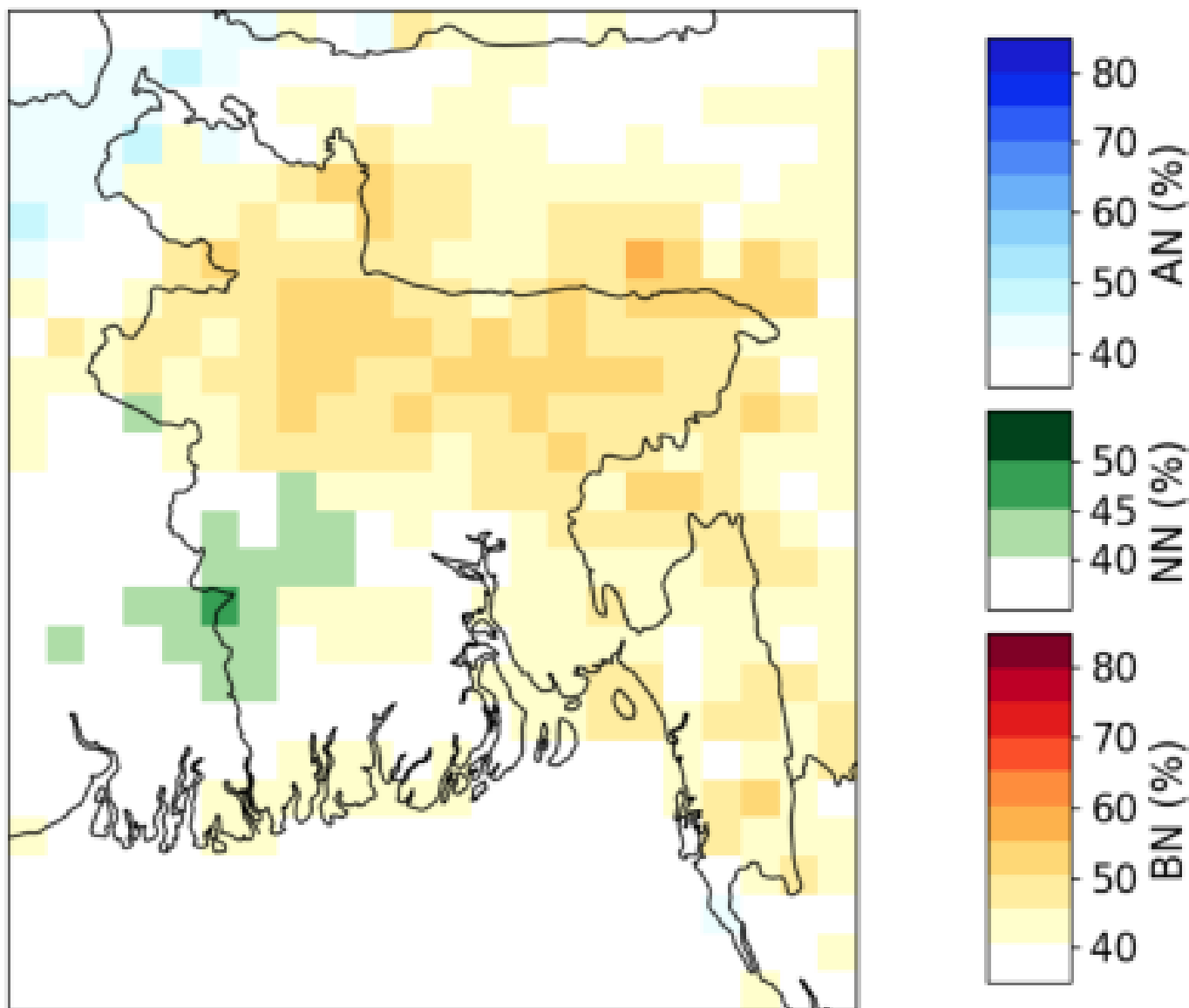


IRI Multi-Model Probability Forecast for Precipitation for
July–August–September 2025, Issued May 2025



Precipitation Forecast by PyCPT for JJAS 2025

CCA_ensemble - Probabilistic Forecast

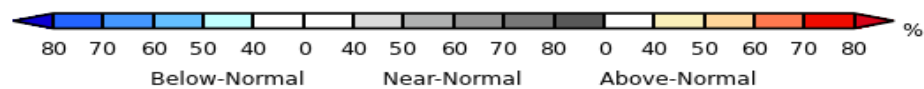
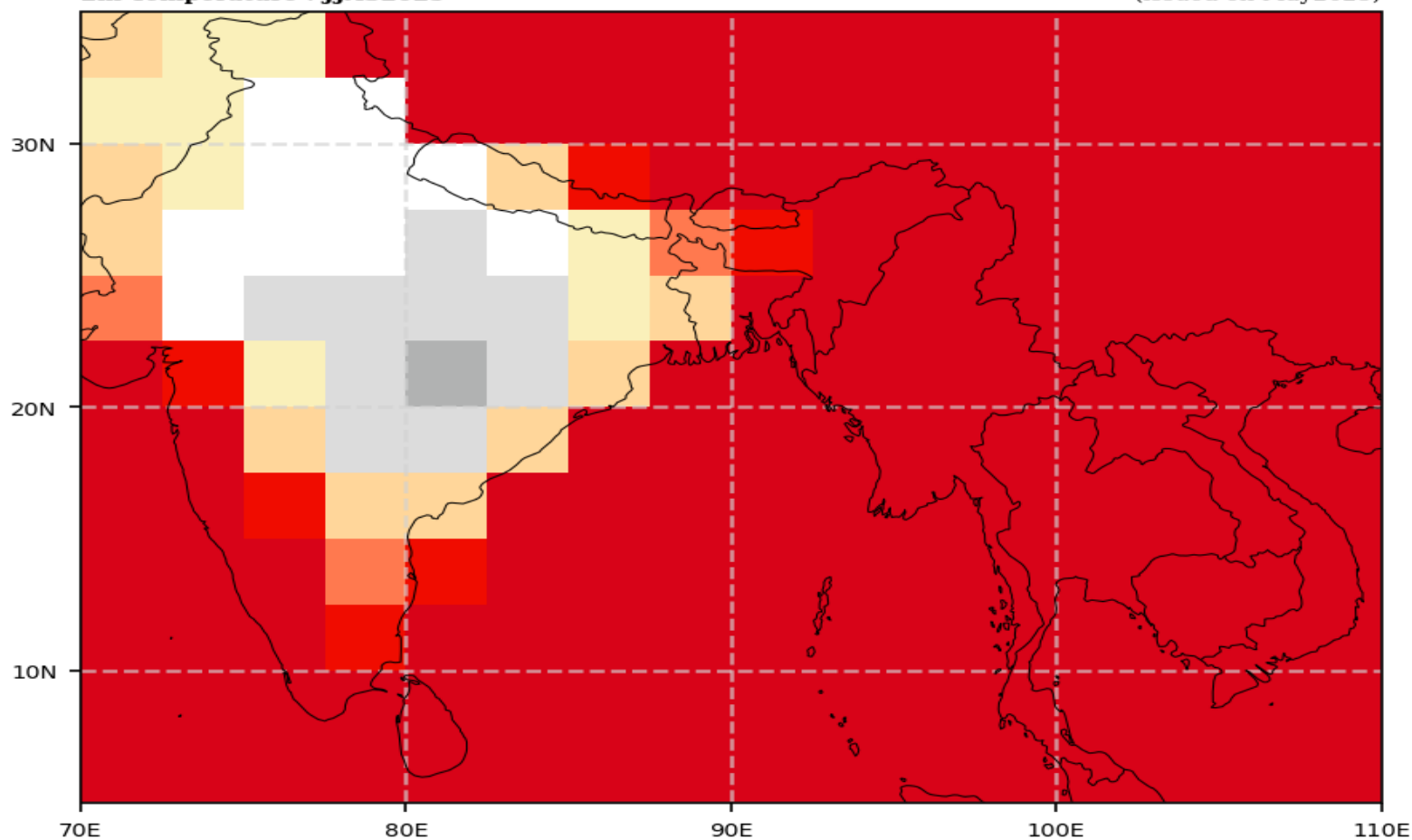


Probabilistic Multi-Model Ensemble Forecast

CMCC, CPTEC, ECMWF, Exeter, Melbourne, Montreal, Offenbach, Seoul, Tokyo, Toulouse, Washington

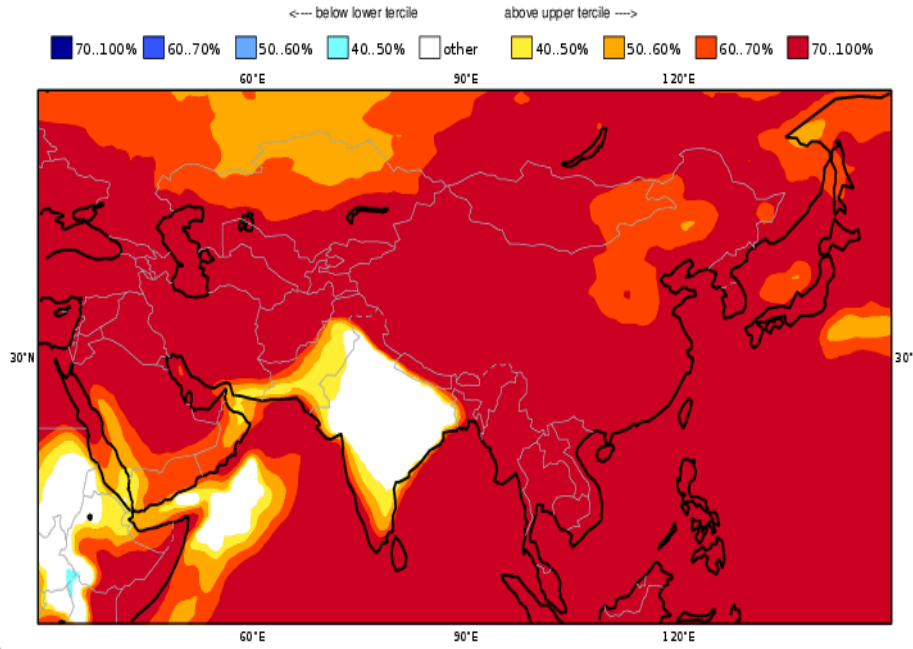
2m Temperature : JJAS2025

(issued on May2025)



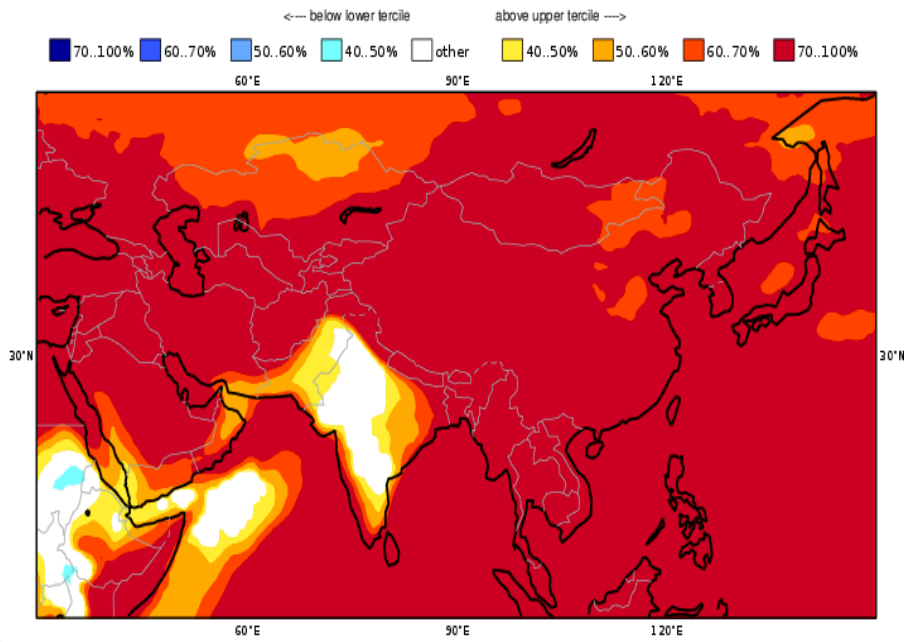
C3S multi-system seasonal forecast ECMWF/Met Office/Météo-France/CMCC/DWD/NCEP/JMA/ECCC/BOI*
Prob(most likely category of 2m temperature)
JJA 202

Nominal forecast start: 01/05/25
Unweighted mean



C3S multi-system seasonal forecast ECMWF/Met Office/Météo-France/CMCC/DWD/NCEP/JMA/ECCC/BOM
Prob(most likely category of 2m temperature)
JAS 2025

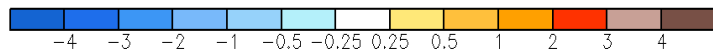
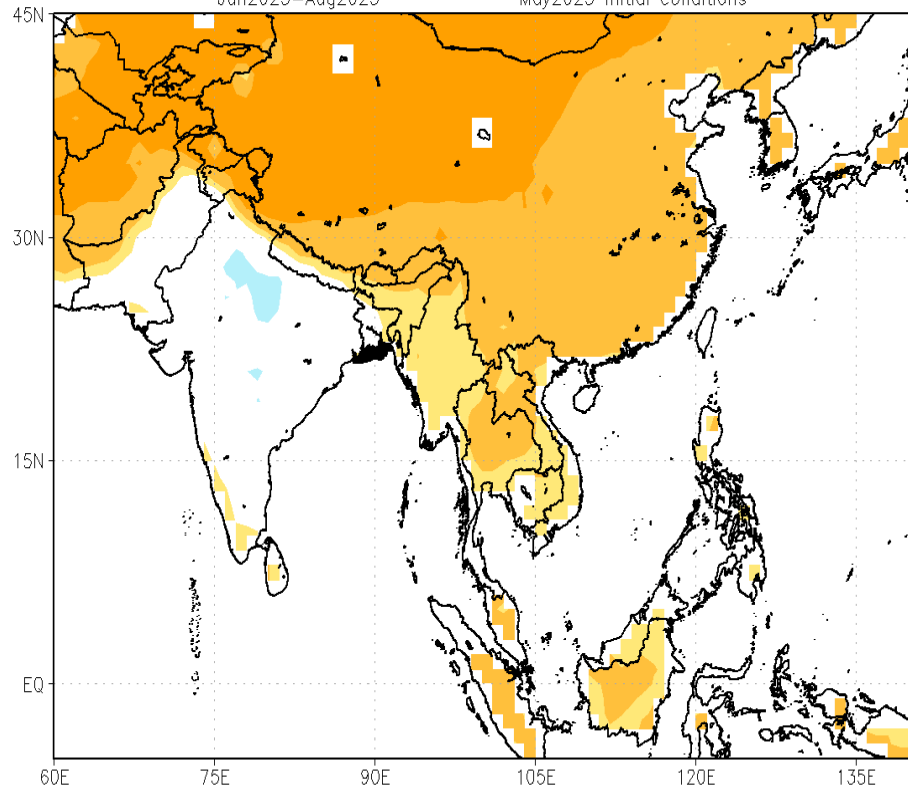
Nominal forecast start: 01/05/25
Unweighted mean



NMME 2-Meter Air Temp. Anomalies (deg C)

Jun2025–Aug2025

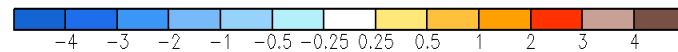
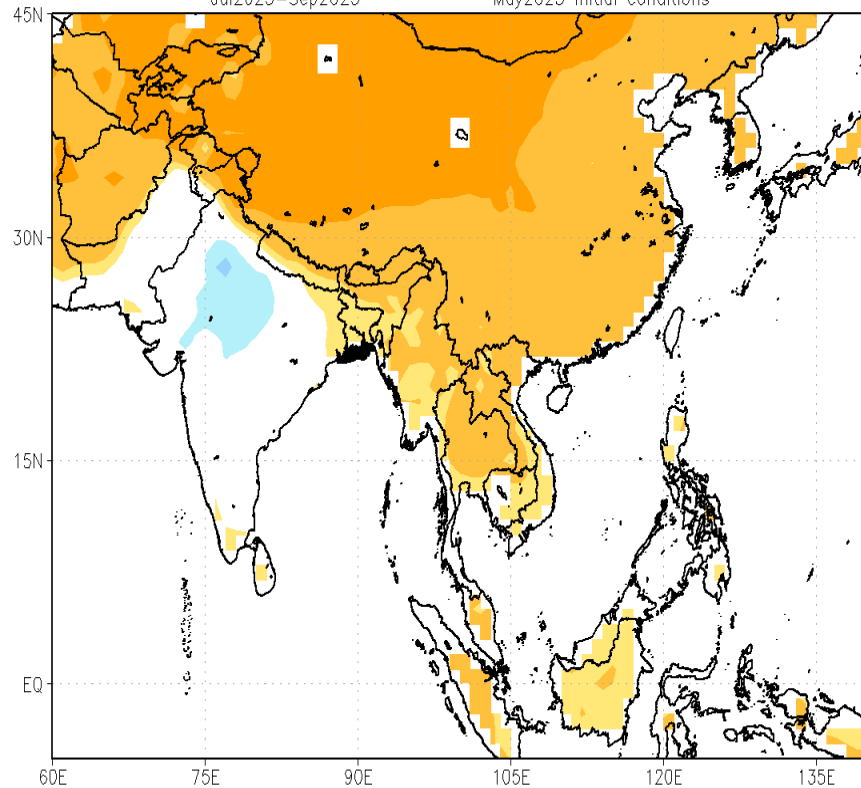
May2025 initial conditions



NMME 2-Meter Air Temp. Anomalies (deg C)

Jul2025–Sep2025

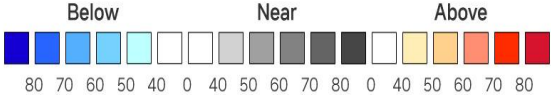
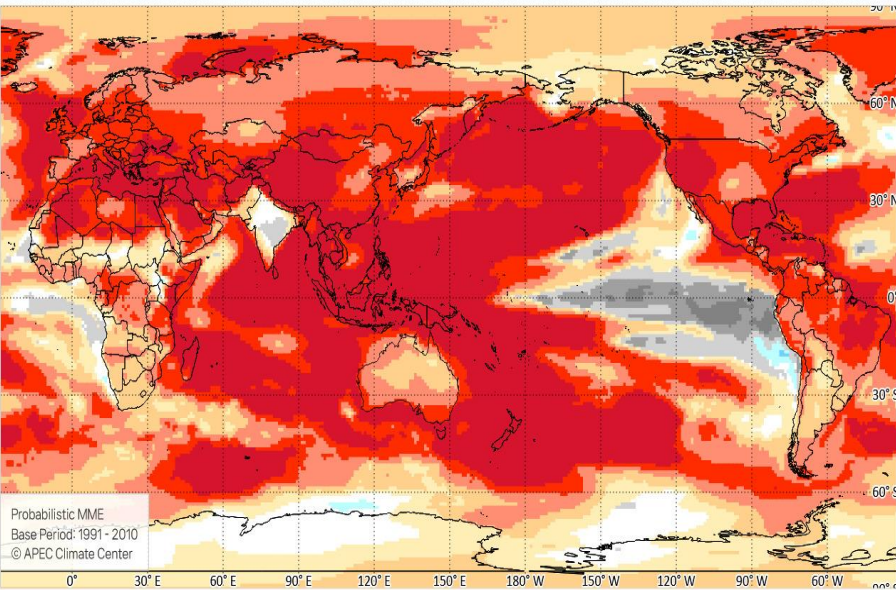
May2025 initial conditions



Temperature at 2m for June 2025-August 2025

Issued: 15 May 2025

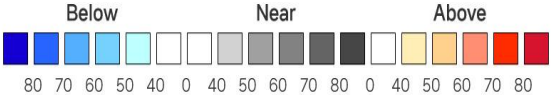
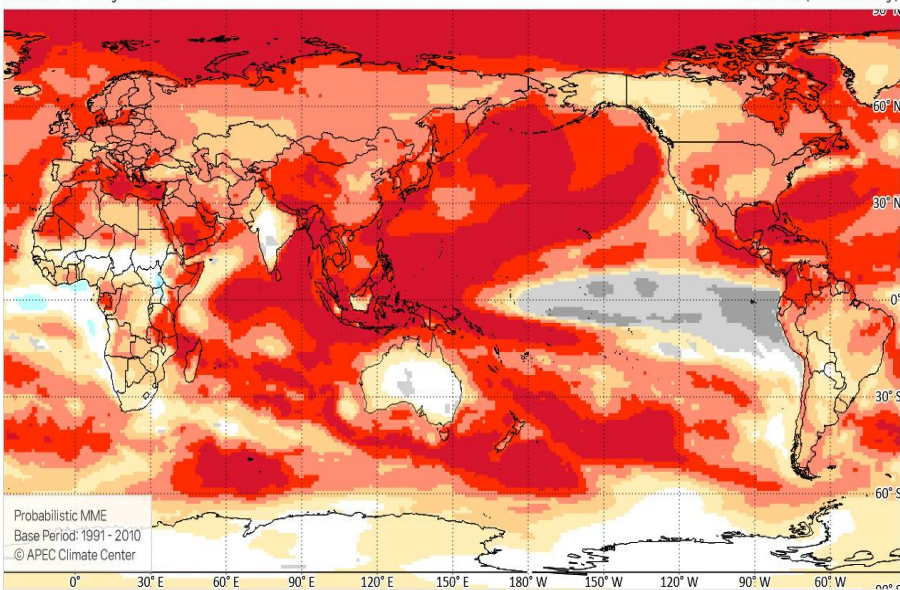
Unit: % (Probability)



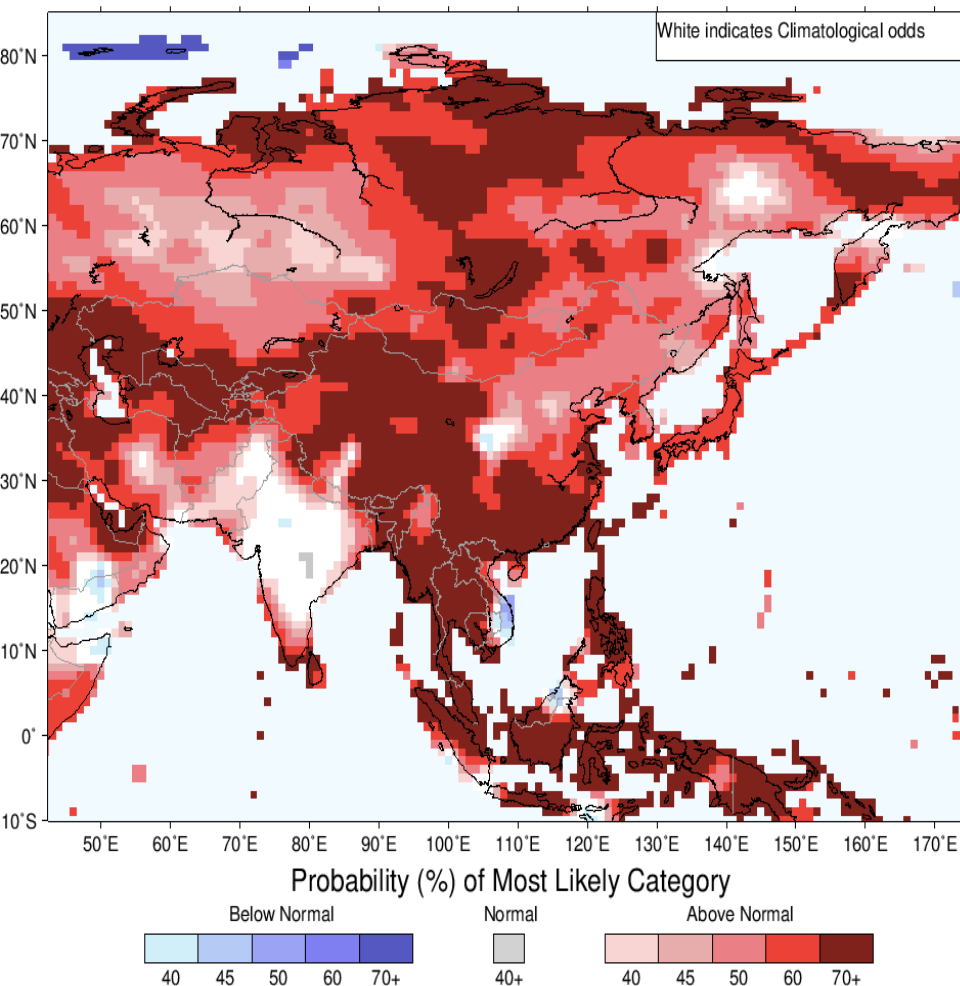
Temperature at 2m for September 2025

Issued: 15 May 2025

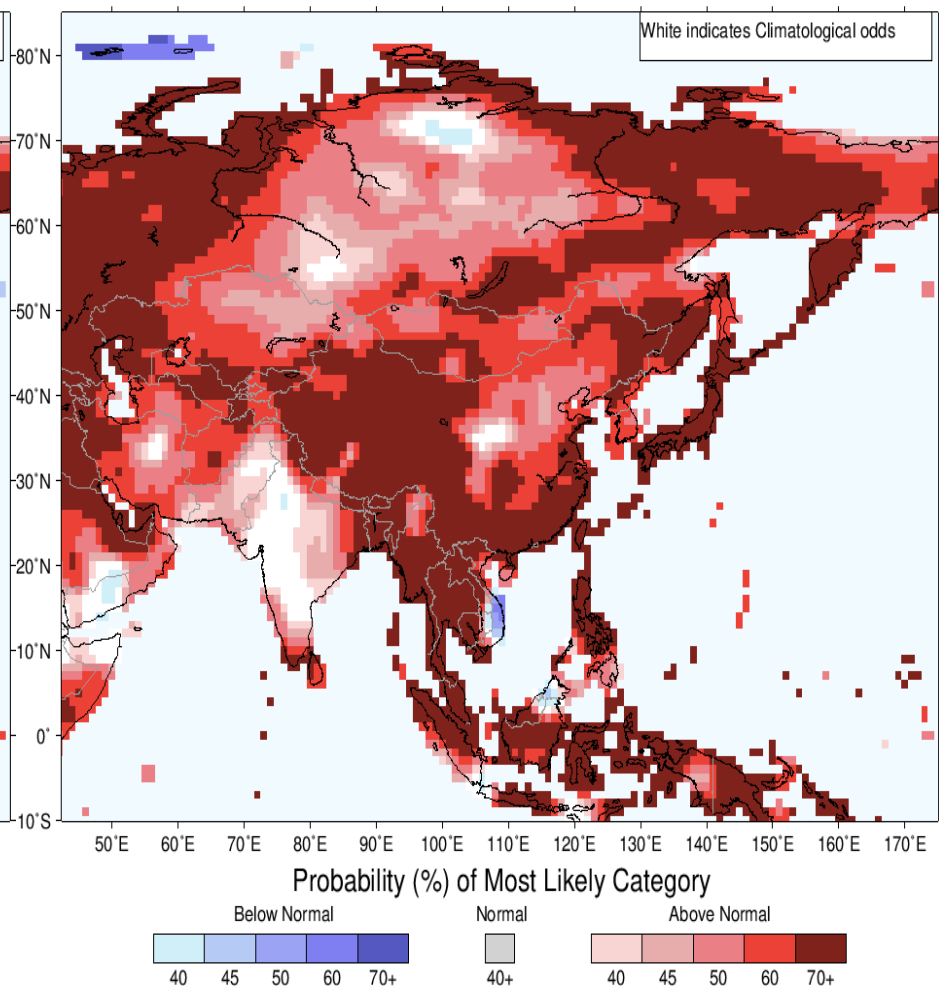
Unit: % (Probability)

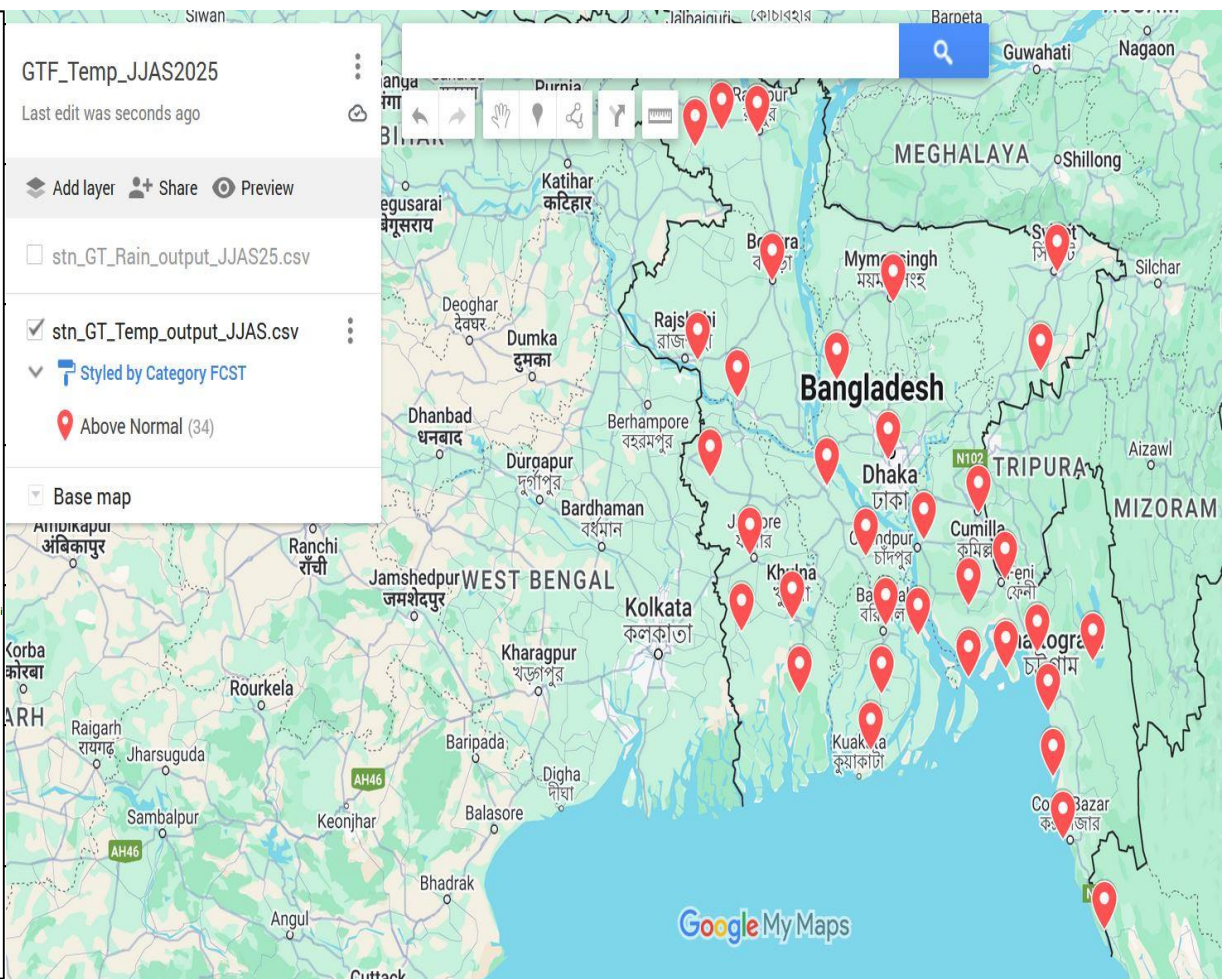
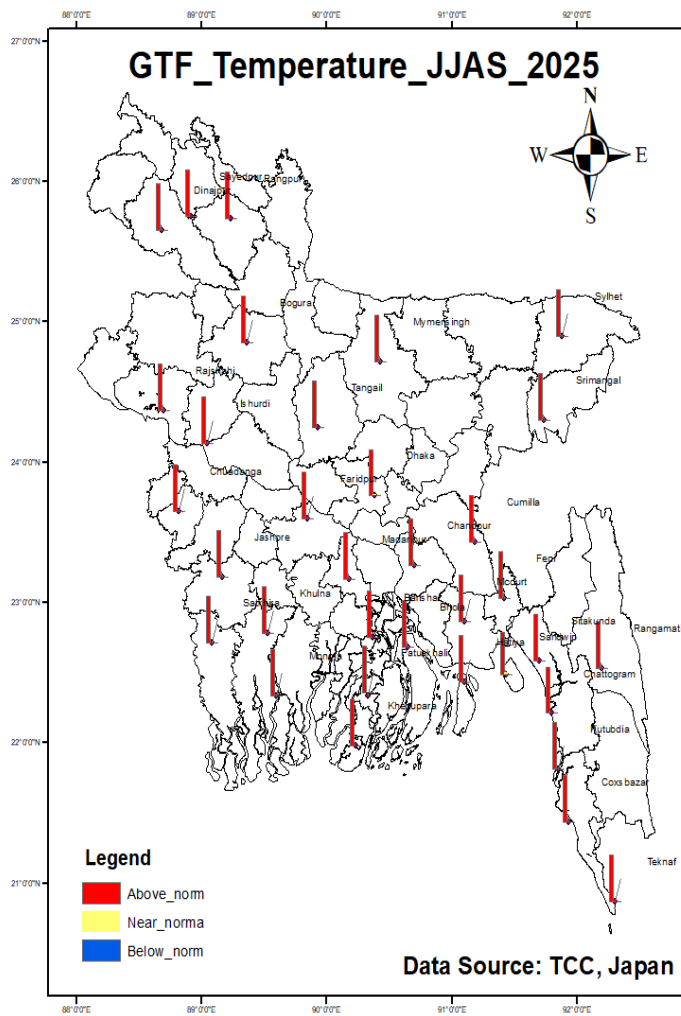


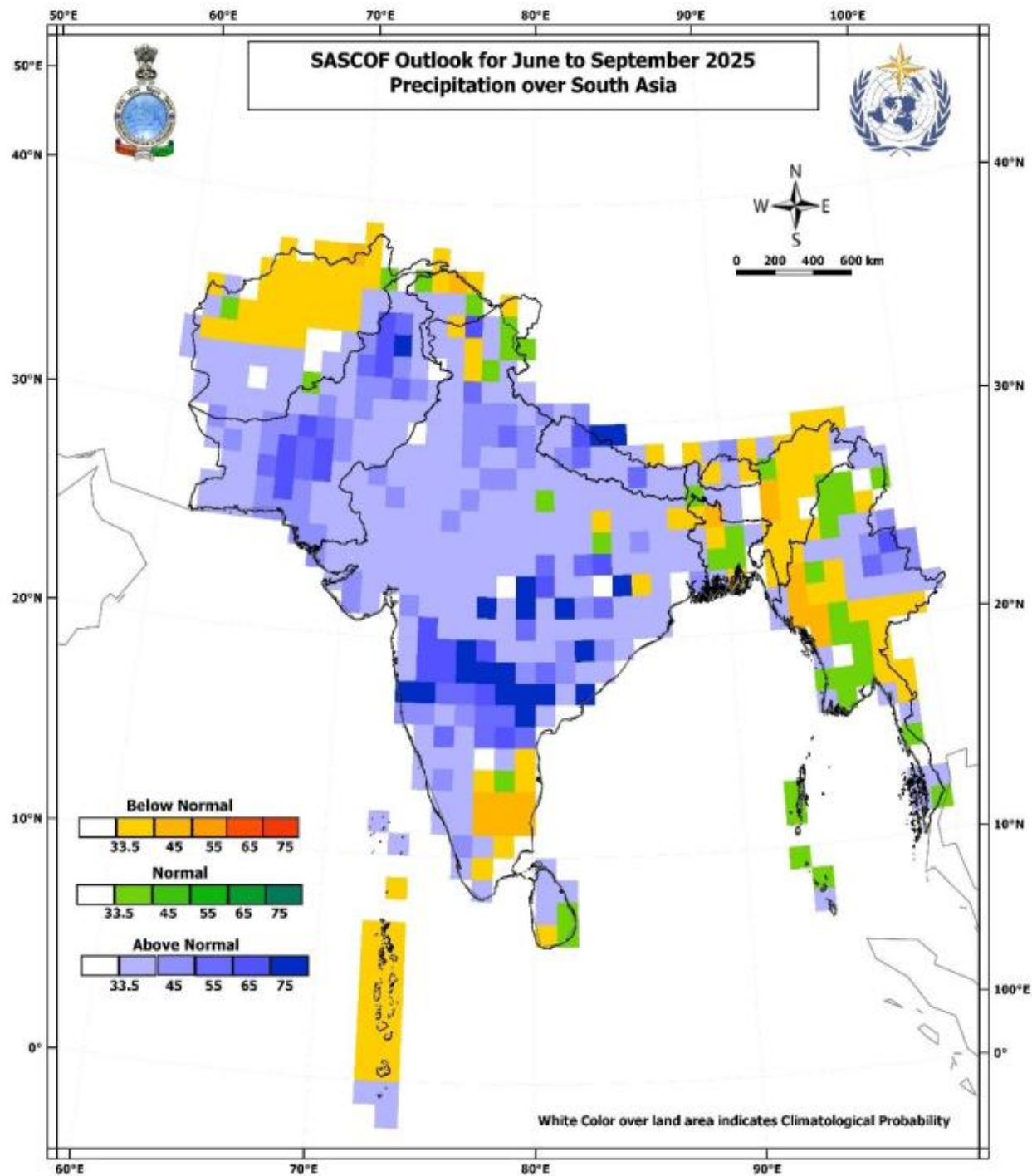
IRI Multi-Model Probability Forecast for Temperature for
June–July–August 2025, Issued May 2025

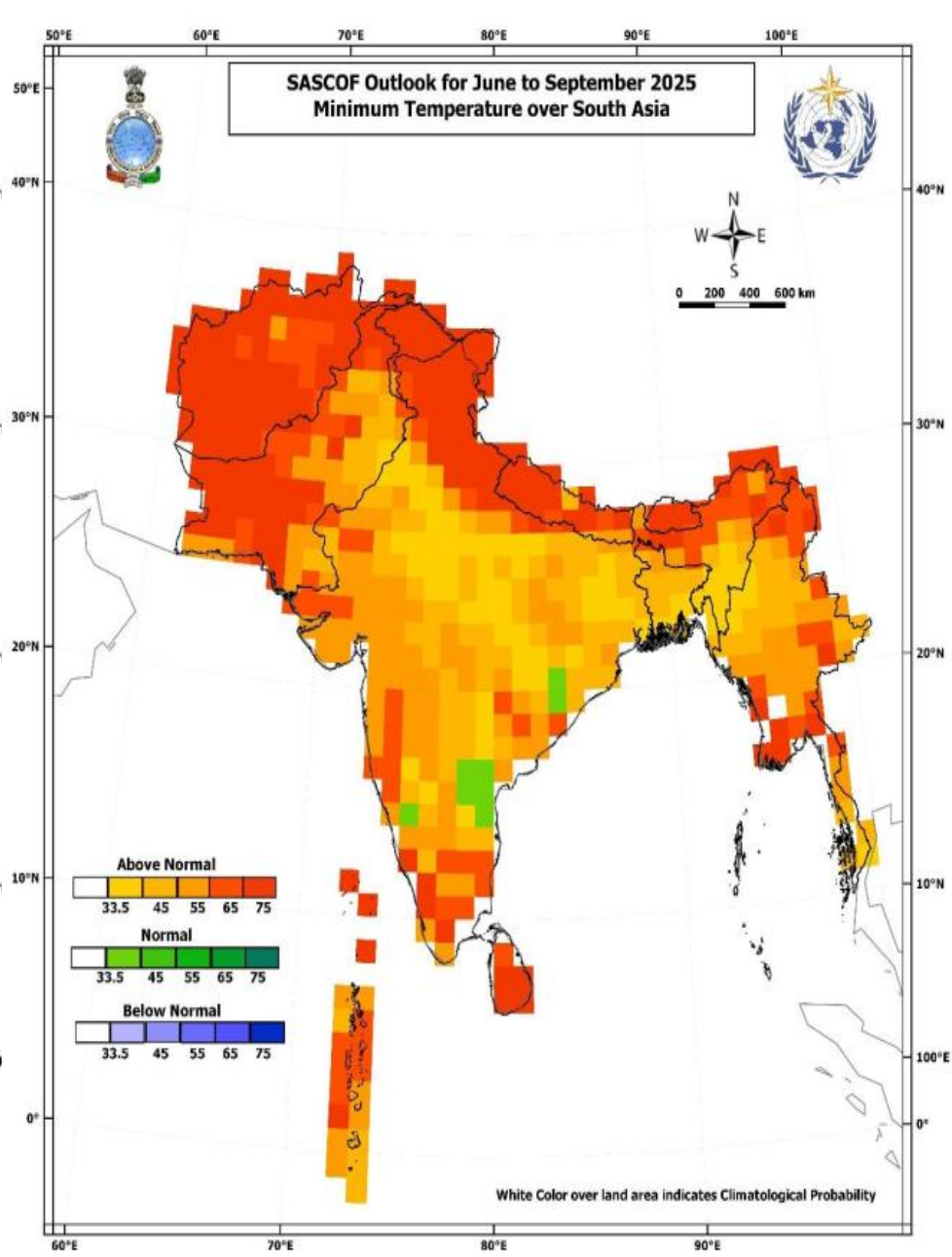
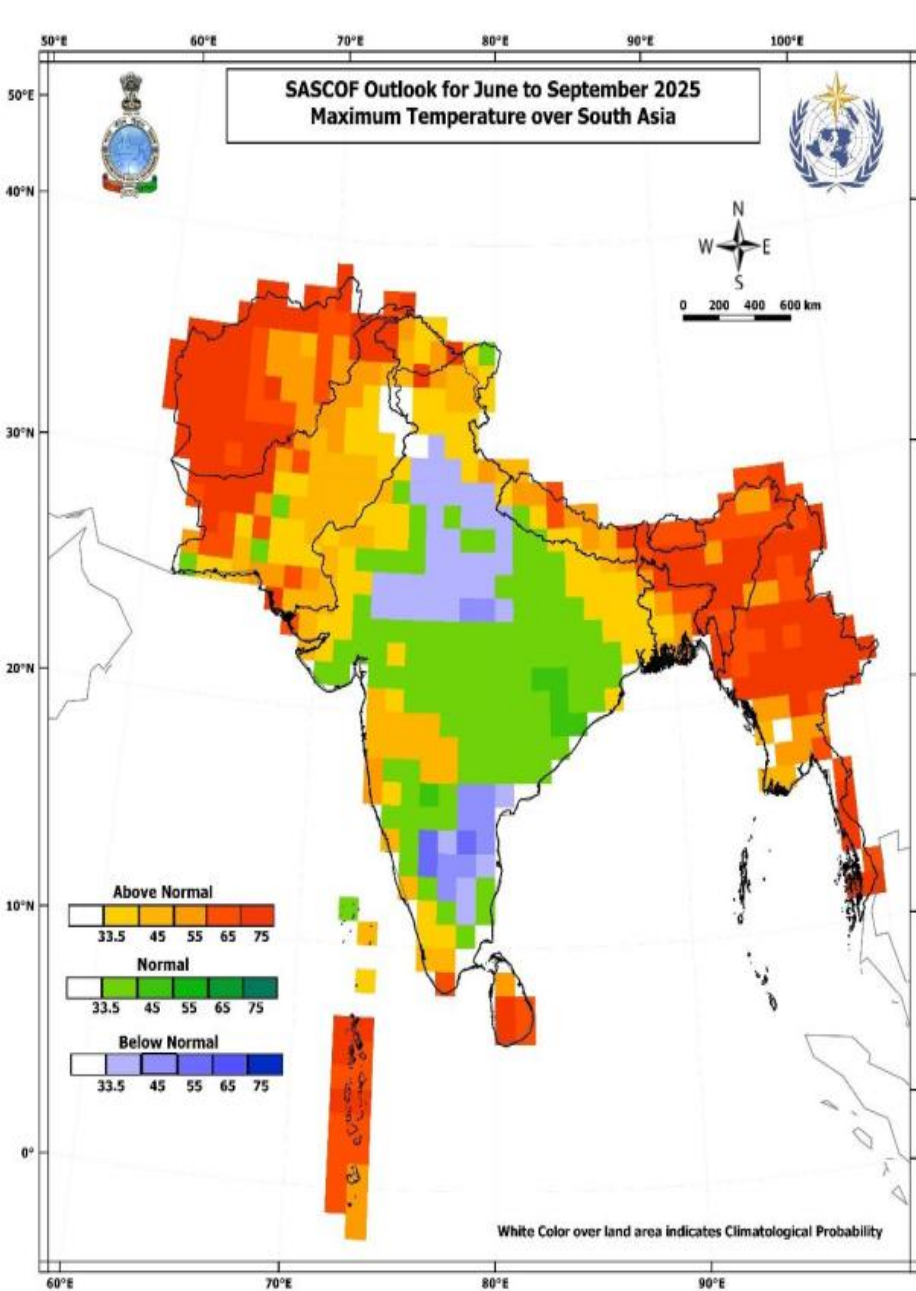


IRI Multi-Model Probability Forecast for Temperature for
July–August–September 2025, Issued May 2025

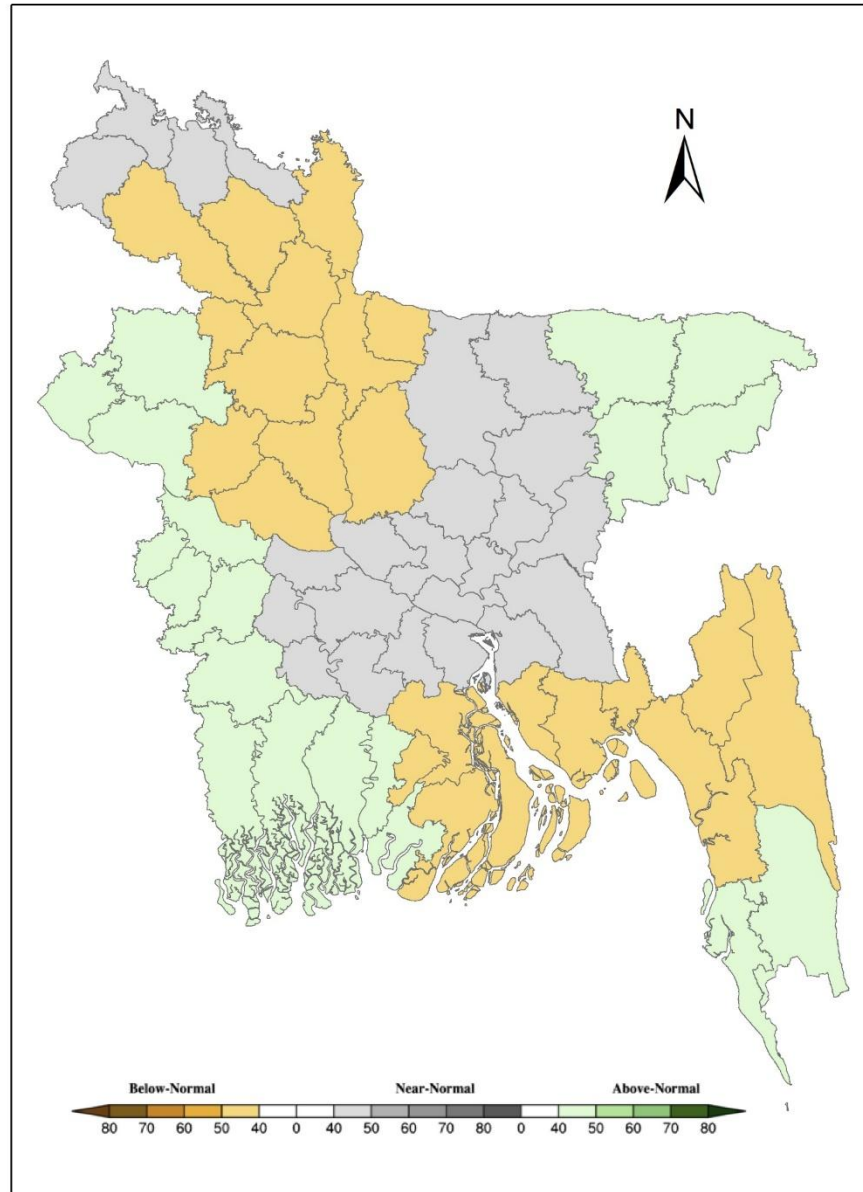




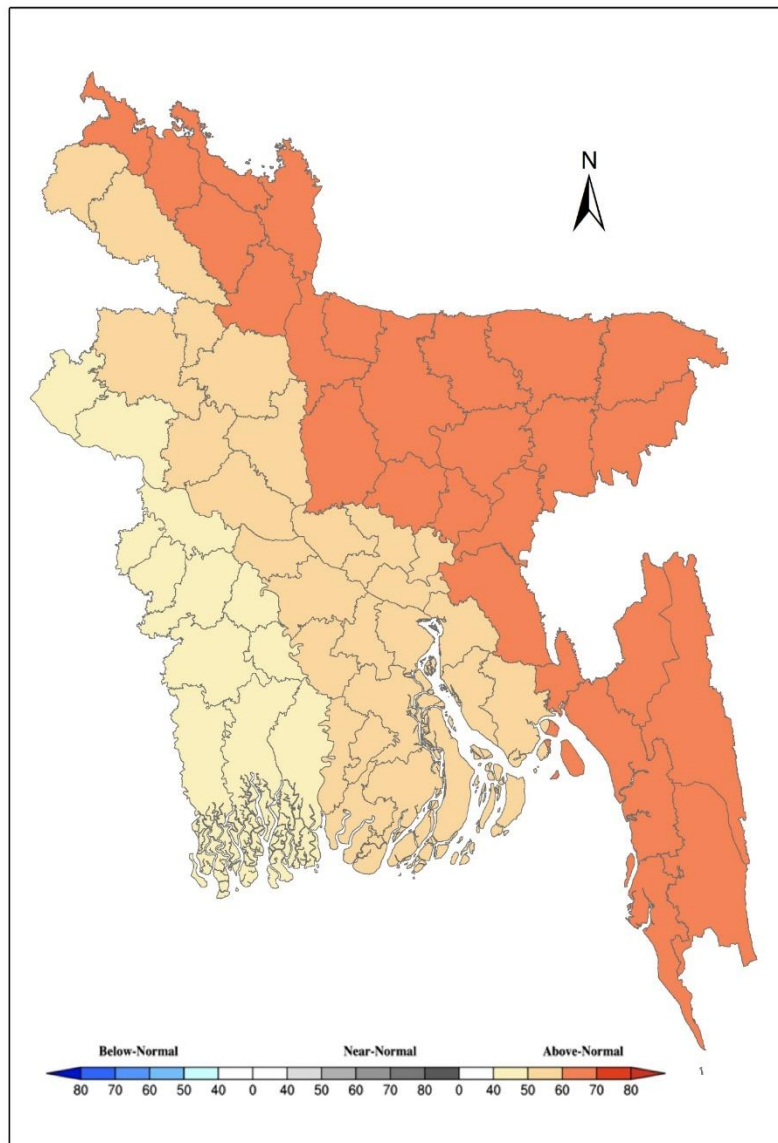




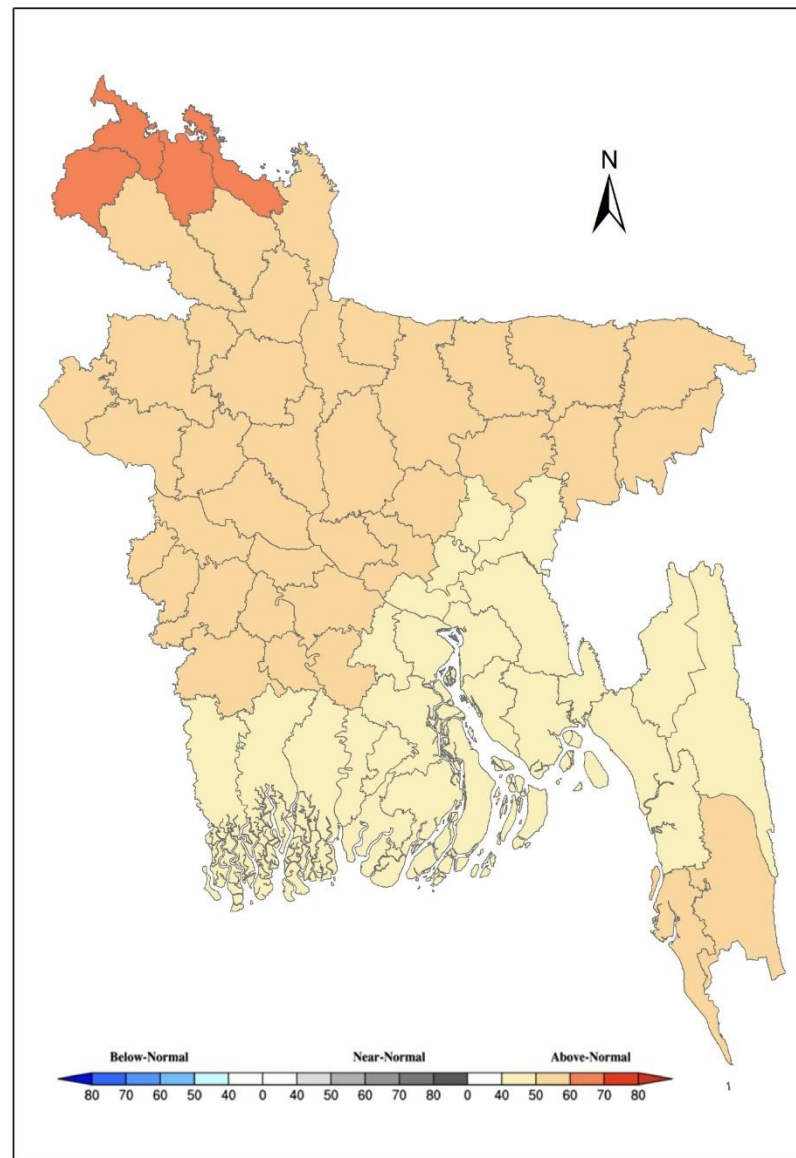
Rainfall Forecast of JJAS, 2025



Maximum Temperature Forecast JJAS, 2025



Minimum Temperature Forecast of JJAS, 2025



Outlook for JJAS 2025

- Rainfall is likely to be Normal
- Maximum and Minimum temperature are likely to be above normal

average rainfall and rainy days over Bangladesh in May 2025 were as follows:

Division	Average normal rainfall(mm)	Average recorded rainfall(mm)	Rainfall Deviation (%)	Average normal rainy days	Average recorded rainy days
Dhaka	259	348	+34.4%	18	18
Mymensingh	361	587	+62.5%	20	20
Chattogram	338	507	+49.9%	17	16
Sylhet	528	1200	+127.3%	24	23
Rajshahi	193	263	+36.5%	16	16
Rangpur	288	452	+56.9%	17	19
Khulna	182	235	+29.5%	15	15
Barishal	239	298	+24.6%	17	20
Bangladesh	298	486	+62.9%	18	18

Thanks