



Agency for hydrometeorology
The Committee of Environmental Protection under the
Government of the Republic of Tajikistan

THE 3RD SESSION OF THE THIRD POLE CLIMATE FORUM

Seasonal climate forecasts for Tajikistan

Ms Parvina Saidjamalova

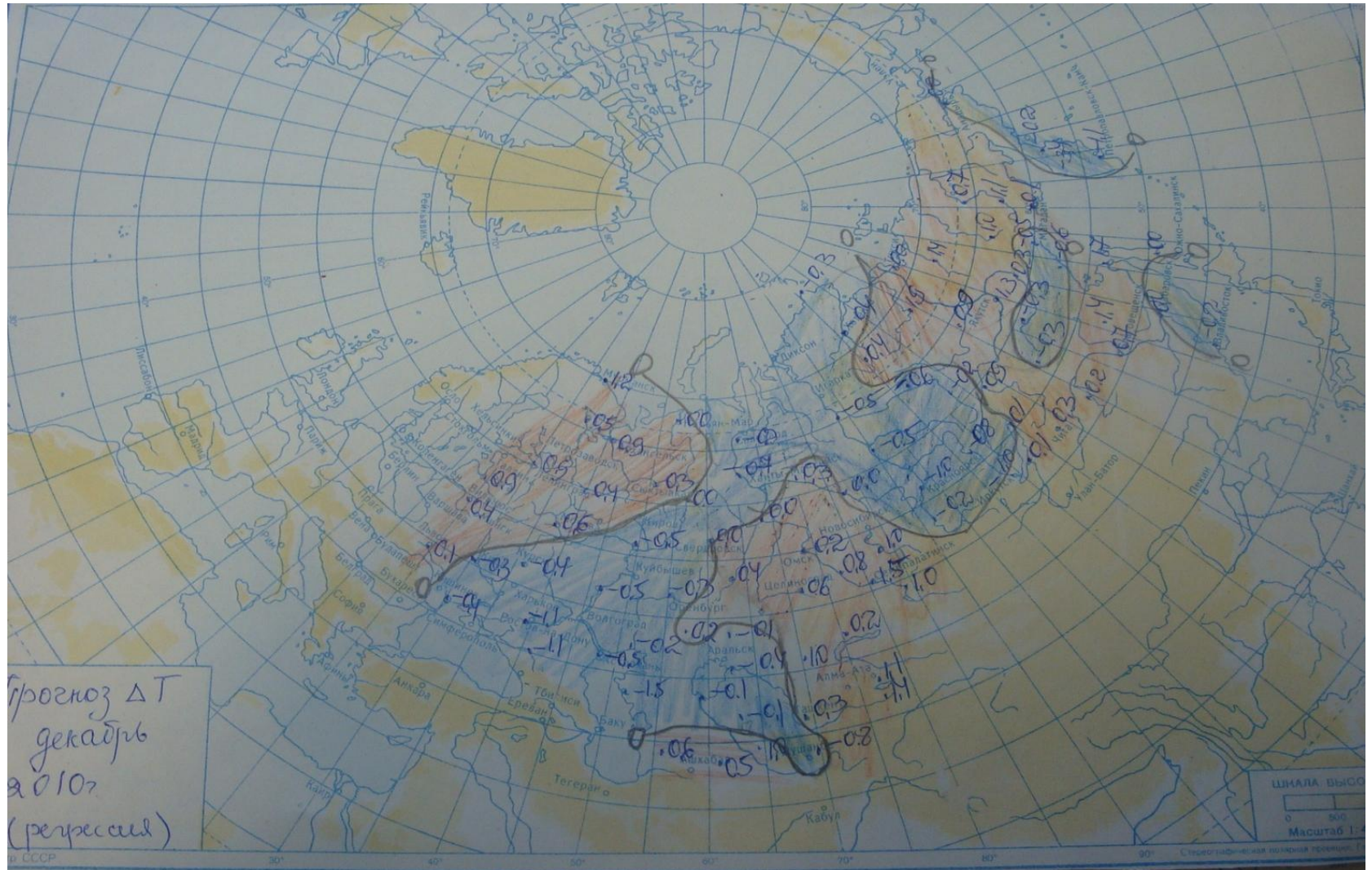
Seasonal Forecasts for Tajikistan

- From 2008 to 2024, seasonal forecasts were prepared in cooperation with the Russian Hydrometeorological Center and the North Eurasian Climate Center.
- Forecast periods included: November–December and January–March.
- In 2025, it was not possible to prepare a seasonal forecast.

Monthly Forecasts

- Uzbekistan's Hydrometeorological Service prepares a monthly year-analogue for Central Asia.
- We use this analogue to develop monthly forecasts.
- Methods used:
 - - Statistical analysis of previous years
 - - Dynamical climate models (e.g., ECMWF, GFS)

Analog prediction maps

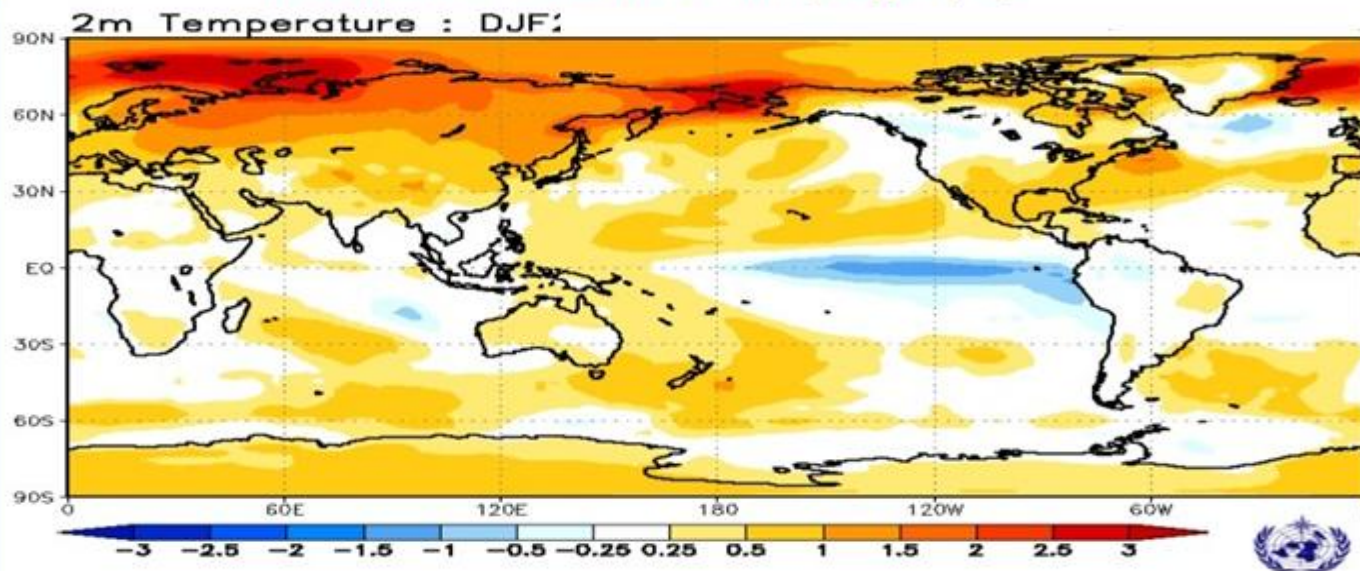


ДЕТЕРМИНИРОВАННЫЕ ПРОГНОЗЫ АНОМАЛИЙ ТЕМПЕРАТУРЫ

МОДЕЛИ:

- Beijing
- Seul
- Washington
- Toulouse
- Exeter
- CPTEC
- ECMWF
- Melbourne
- Montreal
- Moscow
- Offenbach

Композиты: аномалии температуры (°K).



LC MMELRF-WMO Lead Centre for MME LRF

<https://www.wmolc.org/>

Spring 2025 Forecast

- **March** temperatures matched the forecast by 60%.
- **April** and **May** forecasts did not verify.
- Spring temperatures were 1–6°C above normal.
- **May** was particularly anomalous.
- Precipitation was below normal in **April and May**, except for some local areas.
- Increased drought risk in southern regions.

Monthly Forecast Applications

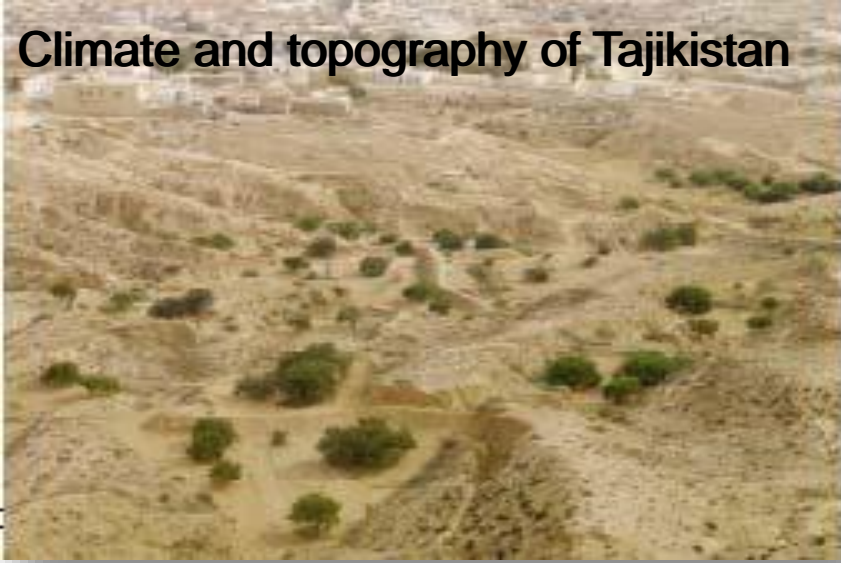
- - Development of adaptation measures for farmers
- - Preparation of emergency services
- - Planning of water resource use



Climate of Tajikistan

- - Complex terrain and diverse climate zones
- - Hot, dry summers in the south; cold winters in mountainous areas
- Regions:
 - - Sughd Region
 - - Khatlon Region
 - - Gorno-Badakhshan Autonomous Region (GBAO)
 - - Republican Subordination Region (RRP)

Climate and topography of Tajikistan



Climate and topography of Tajikistan

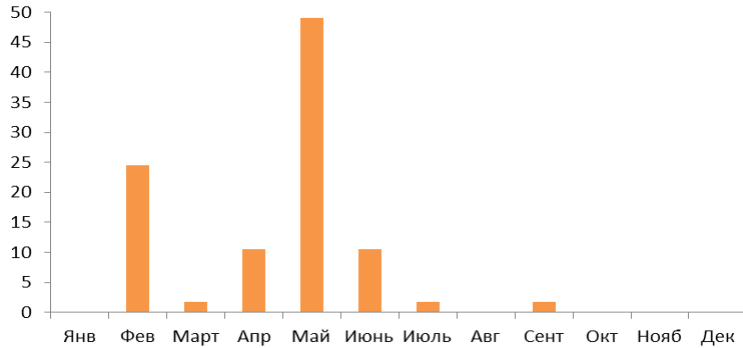


Climate and Topography – Hazards and Extremes

- - Possibility of heat waves
- - Risk of mudflows in mountainous areas
- - Increased avalanche danger in winter

Seasonality of Hazardous and Extreme Events

Осадки



Precipitation

February, April, May, June – general hazards

Наводнения



Floods

April, May, July, August – heavy rains, glacier melt

Лавины



Avalanches

February, March, April – snow-related hazards

Thank you!